

# RECORD OF SURVEY

BEING A SURVEY OF THAT PARCEL OF LAND DESCRIBED IN THAT CERTAIN GRANT DEED RECORDED NOVEMBER 20, 2002 AS DOCUMENT NO. 1662652, SANTA CLARA COUNTY RECORDS AND LYING IN THE UNINCORPORATED AREA OF THE COUNTY OF SANTA CLARA STATE OF CALIFORNIA

SCALE: 1" = 100' JANUARY, 2005  
CONSISTING OF 5 SHEETS

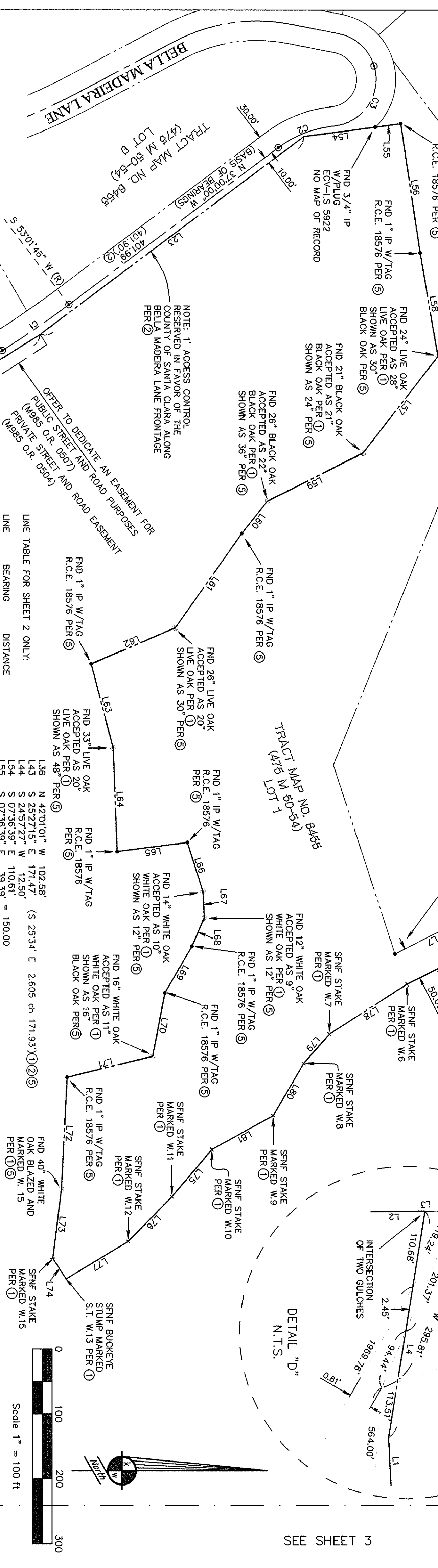
**KIER & WRIGHT**  
CIVIL ENGINEERS & SURVEYORS, INC.  
3350 Scott Boulevard, Building 22 (408) 727-6665  
Santa Clara, California 95054 FAX (408) 727-6641

CURVE TABLE:

CURVE	RADIUS	DELTA	LENGTH
C1	1530.00'	4°39'04"	124.20'
C2	(1530.00')	4°39'00"	124.17' (2)
C3	170.00'	29°29'00"	87.48'
	72.00'	99°16'51"	124.76'
	(72.00')	99°16'47"	124.76' (2)

## LEGEND

PROPERTY LINE  
ADJACENT PROPERTY LINE  
EASEMENT LINE  
MATCHLINE  
MEANDER LINE  
FENCE  
FOUND MONUMENT AS NOTED  
FOUND TREE AS NOTED  
SET 3/4" IP & PLASTIC PLUG U.S. 6256  
OR AS NOTED  
FND MON (3/4" IP W/PLUG L.S. 5922  
IN MON WELL) SEE (2)  
RECORD INFORMATION  
SEARCHED FOR NOT FOUND



## REFERENCES

- GRANT DEED (DOC. NO. 116626526)
- TRACT MAP NO. 6455 (475 M 50-54)
- TRACT MAP NO. 6536 (460 M 38-41)
- RECORD OF SURVEY (510 M 12)
- RECORD OF SURVEY (393 M 9)
- PARCEL MAP (737 M 12-13)
- PARCEL MAP (540 M 46-47)
- DEED DATED DEC. 5, 1866 (W OF DEEDS 121)
- DEED (BOOK V OF MISCELLANEOUS RECORDS PAGE 225)
- CORPORATION GRANT DEED (P237 O.R. 2135)
- GRANT DEED (6518 O.R. 595)

## LINE TABLE FOR SHEET 2 ONLY:

LINE	BEARING	DISTANCE
L1	S 87°09'33" W	157.70'
L2	N 00°30'00" W	164.41'
L3	(N 00°30'00" W 193.96'	
	(N 00°30'00" E 3.19 ch	210.54' (1)(2)(5)
L4	N 80°52'19" E	119.95'
L5	S 26°50'13" E	119.95'
L6	(S 26°50'13" E 120.00' (2)	
L7	(S 35°31'13" E 96.95' (2)	
L8	(S 35°31'13" E 96.95' (2)	
L9	N 32°21'05" W	334.04'
L10	N 32°21'05" W	334.04'
L11	S 32°21'00" E	506.55' (1)(2)(5)
L12	S 37°00'00" E	205.18'
L13	N 82°45'14" W	203.93'
L14	N 68°33'22" W	106.76'
L15	N 78°13'24" W	123.51'
L16	N 43°20'24" W	123.51'
L17	S 87°09'33" W	157.70'
L18	N 00°30'00" W	164.41'
L19	(N 00°30'00" W 193.96'	
L20	(N 00°30'00" E 3.19 ch	210.54' (1)(2)(5)
L21	N 80°52'19" E	119.95'
L22	S 26°50'13" E	119.95'
L23	(S 26°50'13" E 120.00' (2)	
L24	(S 35°31'13" E 96.95' (2)	
L25	(S 35°31'13" E 96.95' (2)	
L26	N 32°21'05" W	334.04'
L27	N 32°21'05" W	334.04'
L28	S 32°21'00" E	506.55' (1)(2)(5)
L29	S 37°00'00" E	205.18'
L30	N 82°45'14" W	203.93'
L31	N 68°33'22" W	106.76'
L32	N 78°13'24" W	123.51'
L33	N 43°20'24" W	123.51'
L34	S 87°09'33" W	157.70'
L35	N 00°30'00" W	164.41'
L36	(N 00°30'00" W 193.96'	
L37	(N 00°30'00" E 3.19 ch	210.54' (1)(2)(5)
L38	N 80°52'19" E	119.95'
L39	S 26°50'13" E	119.95'
L40	(S 26°50'13" E 120.00' (2)	
L41	(S 35°31'13" E 96.95' (2)	
L42	(S 35°31'13" E 96.95' (2)	
L43	N 32°21'05" W	334.04'
L44	N 32°21'05" W	334.04'
L45	S 32°21'00" E	506.55' (1)(2)(5)
L46	S 37°00'00" E	205.18'
L47	N 82°45'14" W	203.93'
L48	N 68°33'22" W	106.76'
L49	N 78°13'24" W	123.51'
L50	N 43°20'24" W	123.51'
L51	S 87°09'33" W	157.70'
L52	N 00°30'00" W	164.41'
L53	(N 00°30'00" W 193.96'	
L54	(N 00°30'00" E 3.19 ch	210.54' (1)(2)(5)
L55	N 80°52'19" E	119.95'
L56	S 26°50'13" E	119.95'
L57	(S 26°50'13" E 120.00' (2)	
L58	(S 35°31'13" E 96.95' (2)	
L59	(S 35°31'13" E 96.95' (2)	
L60	N 32°21'05" W	334.04'
L61	N 32°21'05" W	334.04'
L62	S 32°21'00" E	506.55' (1)(2)(5)
L63	S 37°00'00" E	205.18'
L64	N 82°45'14" W	203.93'
L65	N 68°33'22" W	106.76'
L66	N 78°13'24" W	123.51'
L67	N 43°20'24" W	123.51'
L68	S 87°09'33" W	157.70'
L69	N 00°30'00" W	164.41'
L70	(N 00°30'00" W 193.96'	
L71	(N 00°30'00" E 3.19 ch	210.54' (1)(2)(5)
L72	N 80°52'19" E	119.95'
L73	S 26°50'13" E	119.95'
L74	(S 26°50'13" E 120.00' (2)	
L75	(S 35°31'13" E 96.95' (2)	
L76	(S 35°31'13" E 96.95' (2)	
L77	N 32°21'05" W	334.04'
L78	N 32°21'05" W	334.04'
L79	S 32°21'00" E	506.55' (1)(2)(5)
L80	S 37°00'00" E	205.18'
L81	N 82°45'14" W	203.93'
L82	N 68°33'22" W	106.76'
L83	N 78°13'24" W	123.51'
L84	N 43°20'24" W	123.51'
L85	S 87°09'33" W	157.70'
L86	N 00°30'00" W	164.41'
L87	(N 00°30'00" W 193.96'	
L88	(N 00°30'00" E 3.19 ch	210.54' (1)(2)(5)
L89	N 80°52'19" E	119.95'
L90	S 26°50'13" E	119.95'
L91	(S 26°50'13" E 120.00' (2)	
L92	(S 35°31'13" E 96.95' (2)	
L93	(S 35°31'13" E 96.95' (2)	
L94	N 32°21'05" W	334.04'
L95	N 32°21'05" W	334.04'
L96	S 32°21'00" E	506.55' (1)(2)(5)
L97	S 37°00'00" E	205.18'
L98	N 82°45'14" W	203.93'
L99	N 68°33'22" W	106.76'
L100	N 78°13'24" W	123.51'
L101	N 43°20'24" W	123.51'
L102	S 87°09'33" W	157.70'
L103	N 00°30'00" W	164.41'
L104	(N 00°30'00" W 193.96'	
L105	(N 00°30'00" E 3.19 ch	210.54' (1)(2)(5)
L106	N 80°52'19" E	119.95'
L107	S 26°50'13" E	119.95'
L108	(S 26°50'13" E 120.00' (2)	
L109	(S 35°31'13" E 96.95' (2)	
L110	(S 35°31'13" E 96.95' (2)	
L111	N 32°21'05" W	334.04'
L112	N 32°21'05" W	334.04'
L113	S 32°21'00" E	506.55' (1)(2)(5)
L114	S 37°00'00" E	205.18'
L115	N 82°45'14" W	203.93'
L116	N 68°33'22" W	106.76'
L117	N 78°13'24" W	123.51'
L118	N 43°20'24" W	123.51'
L119	S 87°09'33" W	157.70'
L120	N 00°30'00" W	164.41'
L121	(N 00°30'00" W 193.96'	
L122	(N 00°30'00" E 3.19 ch	210.54' (1)(2)(5)
L123	N 80°52'19" E	119.95'
L124	S 26°50'13" E	119.95'
L125	(S 26°50'13" E 120.00' (2)	
L126	(S 35°31'13" E 96.95' (2)	
L127	(S 35°31'13" E 96.95' (2)	
L128	N 32°21'05" W	334.04'
L129	N 32°21'05" W	334.04'
L130	S 32°21'00" E	506.55' (1)(2)(5)
L131	S 37°00'00" E	205.18'
L132	N 82°45'14" W	203.93'
L133	N 68°33'22" W	106.76'
L134	N 78°13'24" W	123.51'
L135	N 43°20'24" W	123.51'
L136	S 87°09'33" W	157.70'
L137	N 00°30'00" W	164.41'
L138	(N 00°30'00" W 193.96'	
L139	(N 00°30'00" E 3.19 ch	210.54' (1)(2)(5)
L140	N 80°52'19" E	119.95'
L141	S 26°50'13" E	119.95'
L142	(S 26°50'13" E 120.00' (2)	
L143	(S 35°31'13" E 96.95' (2)	
L144	(S 35°31'13" E 96.95' (2)	
L145	N 32°21'05" W	334.04'
L146	N 32°21'05" W	334.04'
L147	S 32°21'00" E	506.55' (1)(2)(5)
L148	S 37°00'00" E	205.18'
L149	N 82°45'14" W	203.93'
L150	N 68°33'22" W	106.76'
L151	N 78°13'24" W	123.51'
L152	N 43°20'24" W	123.51'
L153	S 87°09'33" W	157.70'
L154	N 00°30'00" W	164.41'
L155	(N 00°30'00" W 193.96'	
L156	(N 00°30'00" E 3.19 ch	210.54' (1)(2)(5)
L157	N 80°52'19" E	119.95'
L158	S 26°50'13" E	119.95'
L159	(S 26°50'13" E 120.00' (2)	
L160	(S 35°31'13" E 96.95' (2)	
L161	(S 35°31'13" E 96.95' (2)	
L162	N 32°21'05" W	334.04'
L163	N 32°21'05" W	334.04'
L164	S 32°21'00" E	506.55' (1)(2)(5)
L165	S 37°00'00" E	205.18'
L166	N 82°45'14" W	203.93'
L167	N 68°33'22" W	106.76'
L168	N 78°13'24" W	123.51'
L169	N 43°20'24" W	123.51'
L170	S 87°09'33" W	157.70'
L171	N 00°30'00" W	164.41'
L172	(N 00°30'00" W 193.96'	
L173	(N 00°30'00" E 3.19 ch	210.54' (1)(2)(5)
L174	N 80°52'19" E	119.95'
L175	S 26°50'13" E	119.95'
L176	(S 26°50'13" E 120.00' (2)	
L177	(S 35°31'13" E 96.95' (2)	
L178	(S 35°31'13" E 96.95' (2)	
L179	N 32°21'05" W	334.04'
L180	N 32°21'05" W	334.04'
L181	S 32°21'00" E	506.55' (1)(2)(5)
L182	S 37°00'00" E	205.18'
L183	N 82°45'14" W	203.93'
L184	N 68°33'22" W	106.76'
L185	N 78°13'24" W	123.51'
L186	N 43°20'24" W	123.51'
L187	S 87°09'33" W	157.70'
L188	N 00°30'00" W	164.41'
L189	(N 00°30'00" W 193.96'	
L190	(N 00°30'00" E 3.19 ch	210.54' (1)(2)(5)
L191	N 80°52'19" E	119.95'
L192	S 26°50'13" E	119.95'
L193	(S 26°50'13" E 120.00' (2)	
L194	(S 35°31'13" E 96.95' (2)	
L195	(S 35°31'13" E 96.95' (2)	
L196	N 32°21'05" W	334.04'
L197	N 32°21'05" W	334.04'
L198	S 32°21'00" E	506.55' (1)(2)(5)
L199	S 37°00'00" E	205.18'
L200	N 82°45'14" W	203.93'
L201	N 68°33'22" W	106.76'
L202	N 78°13'24" W	123.51'
L203	N 43°20'24" W	123.51'
L204	S 87°09'33" W	157.70'
L205	N 00°30'00" W	164.41'
L206	(N 00°30'00" W 193.96'	
L207	(N 00°30'00" E 3.19 ch	210.54' (1)(2)(5)
L208	N 80°52'19" E	119.95'
L209	S 26°50'13" E	119.95'
L210	(S 26°50'13" E 120.00' (2)	
L211	(S 35°31'13" E 96.95' (2)	
L212	(S 35°31'13" E 96.95' (2)	
L213	N 32°21'05" W	334.04'
L214	N 32°21'05" W	334.04'
L215	S 32°21'00" E	506.55' (1)(2)(5)
L216	S 37°00'00" E	205.18'
L217	N 82°45'14" W	203.93'
L218	N 68°33'22" W	106.76'
L219	N 78°13'24" W	123.51'
L220	N 43°20'24" W	123.51'
L221	S 87°09'33" W	157.70'
L222	N 00°30'00" W	164.41'
L223	(N 00°30'00" W 193.96'	
L224	(N 00°30'00" E 3.19 ch	210.54' (1)(2)(5)
L225	N 80°52'19" E	119.95'
L226	S 26°50'13" E	119.95'
L227	(S 26°50'13" E 120.00' (2)	
L228	(S 35°31'13" E 96.95' (2)	
L229	(S 35°31'13" E 96.95' (2)	
L230	N 32°21'05" W	334.04'
L231	N 32°21'05" W	334.04'
L232	S 32°21'00" E	506.55' (1)(2)(5)
L233	S 37°00'00" E	205.18'
L234	N 82°45'14" W	203.93'
L235	N 68°33'22" W	106.76'
L236	N 78°13'24" W	123.51'
L237	N 43°20'24" W	123.51'
L238	S 87°09'33" W	157.70'
L239	N 00°30'00" W	164.41'
L240	(N 00°30'00" W 193.96'	
L241	(N 00°30'00" E 3.19 ch	210.54' (1)(2)(5)
L242	N 80°52'19" E	119.95'
L243	S 26°50'13" E	119.95'
L244	(S 26°50'13" E 120.00' (2)	
L245	(S 35°31'13" E 96.95' (2)	
L246	(S 35°31'13" E 96.95' (2)	
L247	N 32°21'05" W	334.04'
L248	N 32°21'05" W	334.04'
L249	S 32°21'00" E	506.55' (1)(2)(5)
L250	S 37°00'00" E	205.18'
L251	N 82°45'14" W	203.93'
L252	N 68°33'22" W	106.76'
L253	N 78°13'24" W	123.51'
L254	N 43°20'24" W	123.51'
L255	S 87°09'33" W	157.70'
L256	N 00°30'00" W	164.41'
L257	(N 00°30'00" W 193.96'	
L258	(N 00°30'00" E 3.19 ch	210.54' (1)(2)(5)
L259	N 80°52'19" E	119.95'
L260	S 26°50'13" E	119.95'
L261	(S 26°50'13" E 120.00' (2)	
L262	(S 35°31'13" E 96.95' (2)	
L263	(S 35°31'13" E 96.95' (2)	
L264	N 32°21'05" W	334.04'
L265	N 32°21'05" W	334.04'
L266	S 32°21'00" E	506.55' (1)(2)(5)
L267	S 37°00'00" E	205.18'
L268	N 82°45'14" W	203.93'
L269	N 68°33'22" W	106.76'
L270	N 78°13'24" W	123.51'
L271	N 43°20'24" W	123.51'
L272	S 87°09'33" W	157