

RECEIVED

CORNER RECORD

SEP 29 1987

CR 52

COUNTY OF Alameda T. 1S R. 3W mt. Diablo HUMAN COMPANY
 CORNER TYPE: GOV'T. CORNER ☐ MEANDER ☐ RANCHO ☐ CONTROL ☐ OTHER ☒ MERIDIAN
 CORNER IDENTIFICATION — DATE OF VISIT June 11 1987



CORNER — LEFT AS FOUND ☐ FOUND AND TAGGED ☐ REESTABLISHED OBLITERATED CORNER ☐ REBUILT ☐

PHYSICAL DESCRIPTION OF CORNER FOUND; EVIDENCE AND METHOD USED TO IDENTIFY OR REESTABLISH

Monuments as shown on the map "Resubdivision of the map of Claremont Heights (Subdivision No. 1)" Oakland, Alameda County, California. Filed February 13, 1925 in Book 4 of Maps at page 62, Alameda County Records were found and used to establish the location of Lot 23.

PHYSICAL DESCRIPTION OF MONUMENTS REBUILT OR PERPETUATED

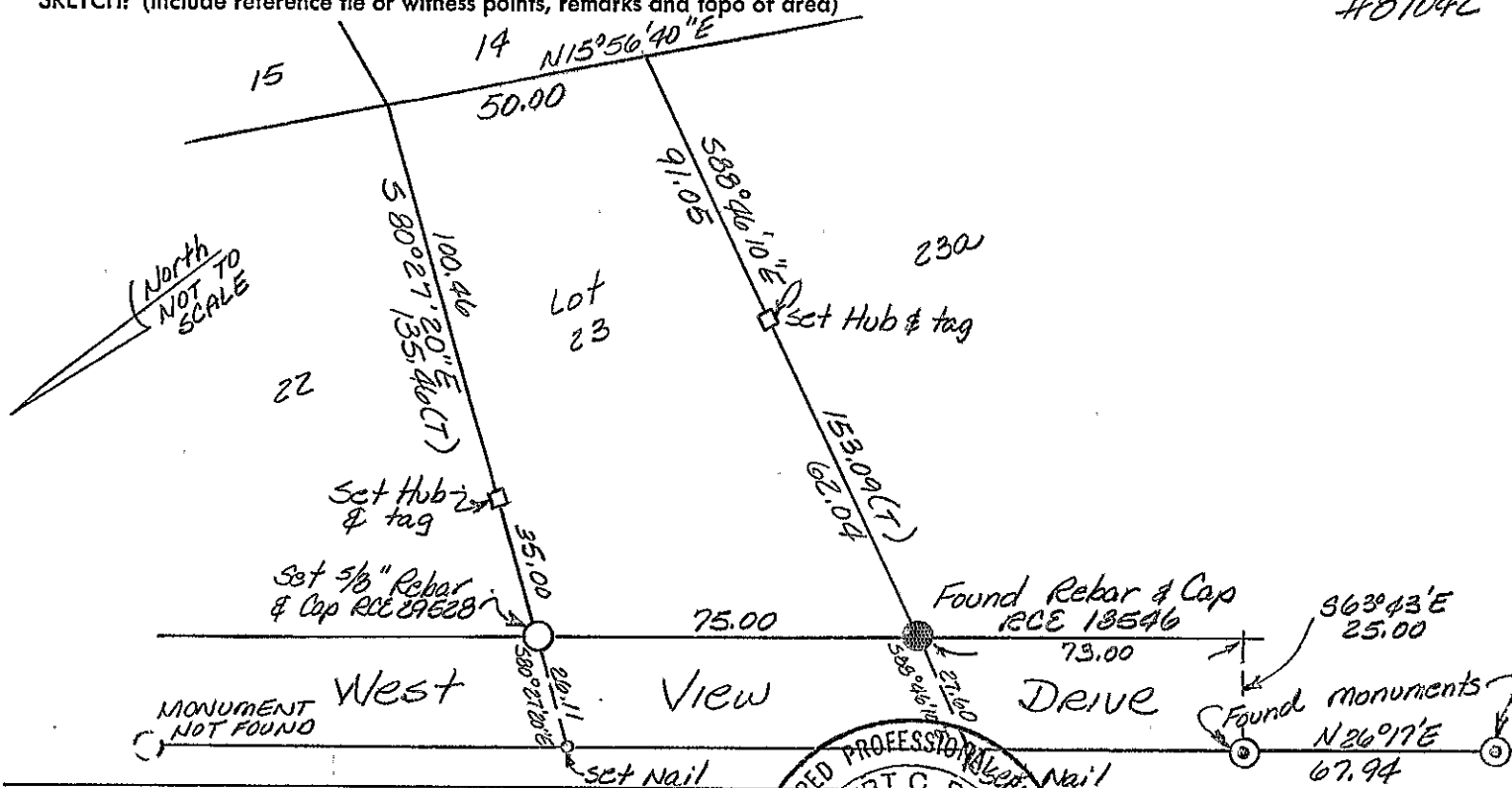
2x2 Hubs with tag RCE 29528 or 5/8" Rebar w/serve-cap, RCE 29528 were set as shown in the sketch below.

CALIFORNIA COORDINATE SYSTEM ORDER: FIRST ☐ SECOND ☐ THIRD ☐
 STATIONS USED: NGS (USC & GS) ☐ STATE ☐ COUNTY ☐ OTHER ☐ STATION _____ STATION _____
 ZONE _____ ELEVATION _____ NORTHINGS (Y) _____ EASTINGS (X) _____

(Fold)

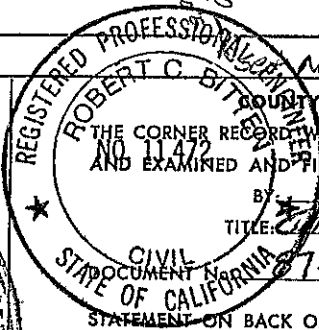
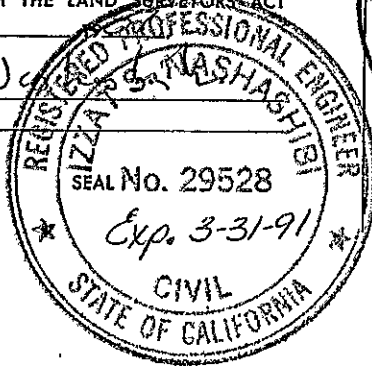
SKETCH: (Include reference tie or witness points, remarks and topo of area)

#87042



SURVEYOR'S CERTIFICATE

THIS CORNER RECORD WAS PREPARED BY ME OR UNDER MY DIRECTION IN CONFORMANCE WITH THE LAND SURVEYORS ACT ON June 11

SIGNED: 194 NL.S. or R.C.E. No.: 29528

COUNTY SURVEYOR'S CERTIFICATE

THE CORNER RECORD WAS RECEIVED Sept. 4 1987 AND EXAMINED AND FILED 12-23 1987

BY Robert C. Byrnes
 TITLE: Chief Deputy County Surveyor

STATEMENT ON BACK OF SHEET

YES ☒ NO ☐

Bk. 1 C.R. Pg. 52