

# RECORD OF SURVEY

Lands of Bradshaw

Portion of Lot 10, Map of Albright Subdivision filed in 'A' of Maps, 94

City of Monte Sereno, County of Santa Clara

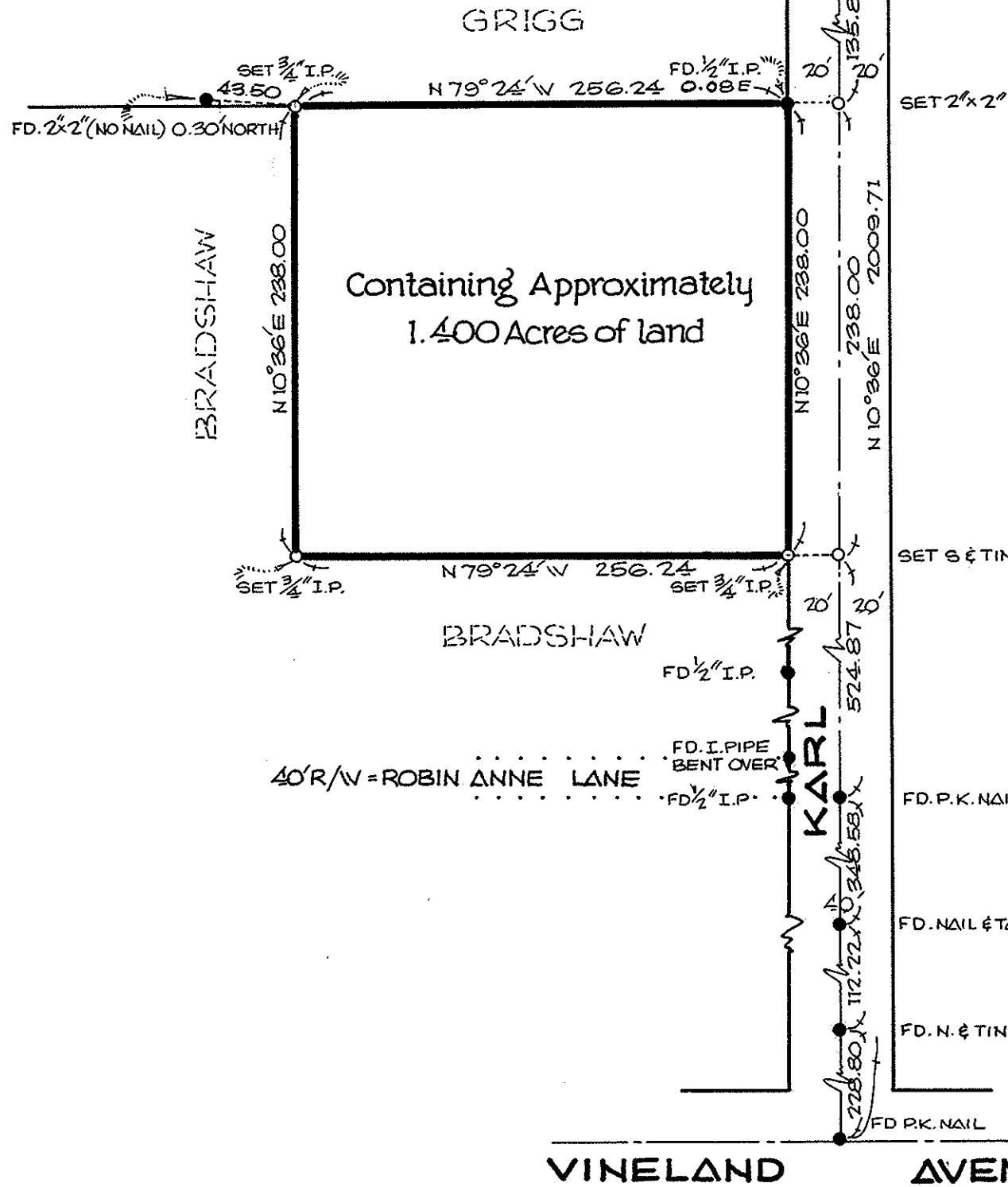
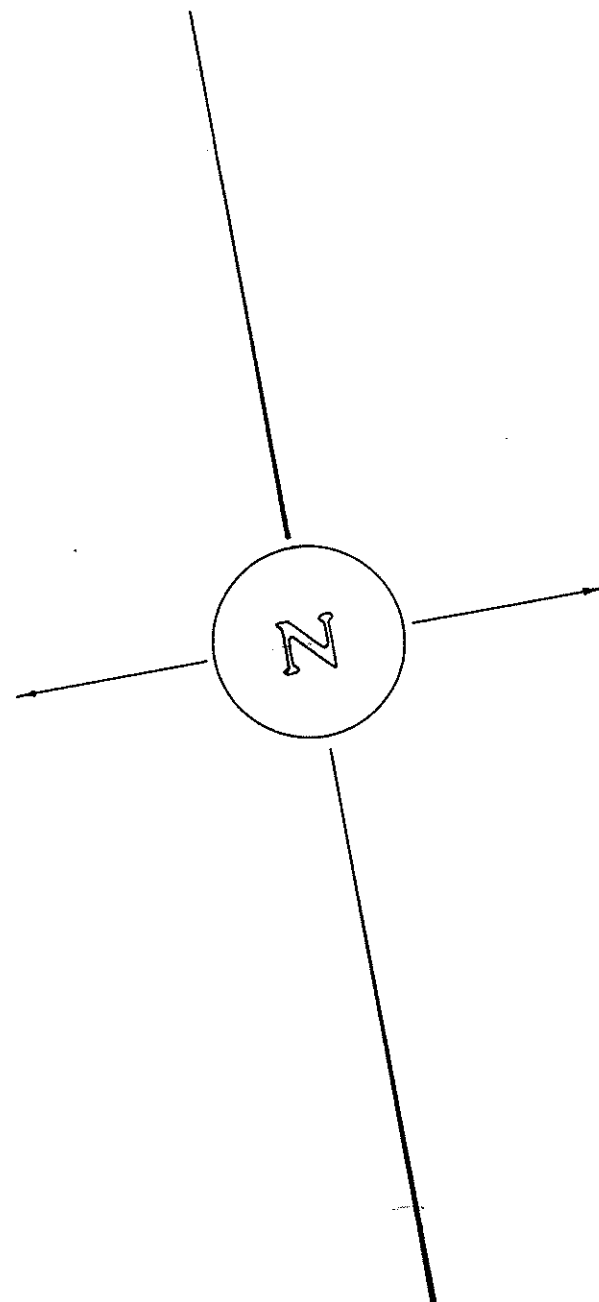
JENNINGS — MC DERMOTT ENGINEERING

FEBRUARY, 1963

## LEGEND

- = Monument Found
- = Iron Pipe Set

SCALE: 1" = 80'



## BASIS OF BEARINGS

The bearing of S10°36'W for the centerline of Karl Avenue as shown on Record of Survey filed in Book 107 of Maps, page 44, Santa Clara County Records, was taken as basis for all bearings hereon.

## SURVEYOR'S CERTIFICATE

This map correctly represents a survey made by me or under my direction in conformance with the requirements of Chapter 15 of Division 3 of the Business and Professions Code at the request of Mel Rault in Feb, 1963

Robert G. McDermott  
Licensed Land Surveyor No 2734

## COUNTY SURVEYOR'S CERTIFICATE

This map has been examined for conformance with the requirements of Chapter 15 of Division 3 of the Business and Professions Code this 14<sup>th</sup> day of March 1963

James T. Pott, County Surveyor, Santa Clara County.

By V. J. Morrison Deputy

## COUNTY RECORDER'S CERTIFICATE

# 2366071

Filed for record this 18<sup>th</sup> day of March, 1963 at 8:08 AM, in Book 158 of Maps at Page 28 at the request of Robert G. Mc Dermott.

\$5.00

Paul R. Teilh, County Recorder of Santa Clara County, California

By Donald E. Wilson Deputy

Job No 955

# RECORD OF SURVEY

Lands of Osterberg

Portion of Section 35, Twp. 7 South, Rge. 1 West

CAMPBELL, CALIF.

SCALE: 1" = 40'

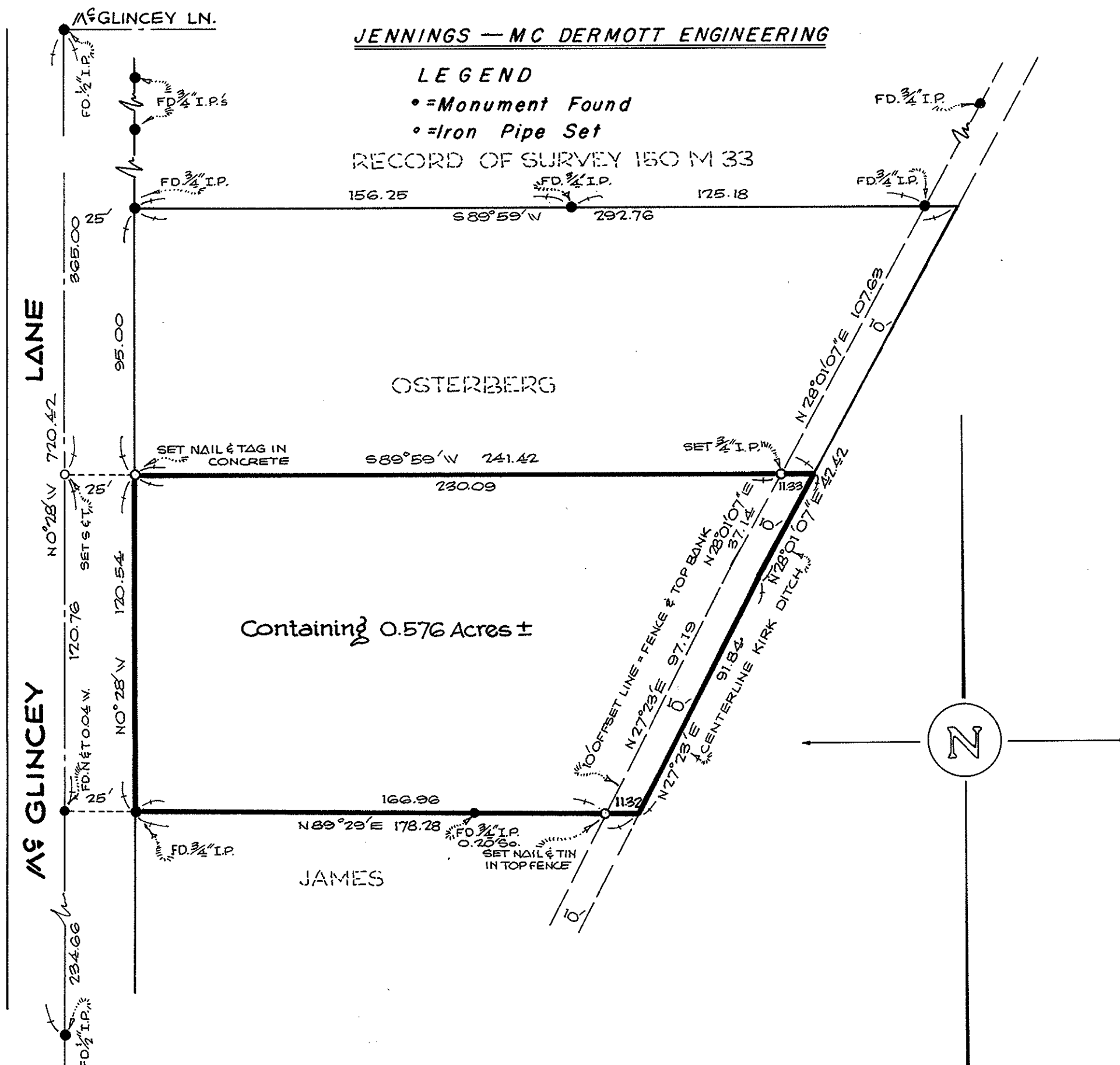
FEBRUARY, 1962

JENNINGS — MC DERMOTT ENGINEERING

## LEGEND

- = Monument Found
- = Iron Pipe Set

RECORD OF SURVEY 150 M 33



## BASIS OF BEARINGS

The bearing of N0°28'W for the centerline of M<sup>s</sup>Glincey Lane as shown on Record of Survey which was filed in Book 89 of Maps, page 53, Santa Clara County Records was taken as basis for all bearings shown hereon.

## SURVEYOR'S CERTIFICATE

This map correctly represents a survey made by me or under my direction in conformance with the requirements of Chapter 15 of Division 3 of the Business and Professions Code at the request of Mrs. Osterberg in Feb. 1963

Robert G. McDermott  
Licensed Land Surveyor No 2734

## COUNTY SURVEYOR'S CERTIFICATE

This map has been examined for conformance with the requirements of Chapter 15 of Division 3 of the Business and Professions Code this 15<sup>th</sup> day of March 1963

JAMES T. POTT, County Surveyor, Santa Clara County.

By V. J. Morrison Deputy

## COUNTY RECORDER'S CERTIFICATE

# 2366072

Filed for record this 18<sup>th</sup> day of March, 1963 at 8:08 AM, in Book 158 of Maps at Page 28 at the request of Robert G. Mc Dermott.

\$5.00

PAUL R. TEILH, County Recorder of Santa Clara County, California

By Donald E. Wilson Deputy

Job No 953