

# RECORD OF SURVEY- BOUNDARY LINE ADJUSTMENT FOR VERA M.ALLEN

SCALE: 1" = 300'

NOVEMBER 1987

## NOTES & LEGENDS

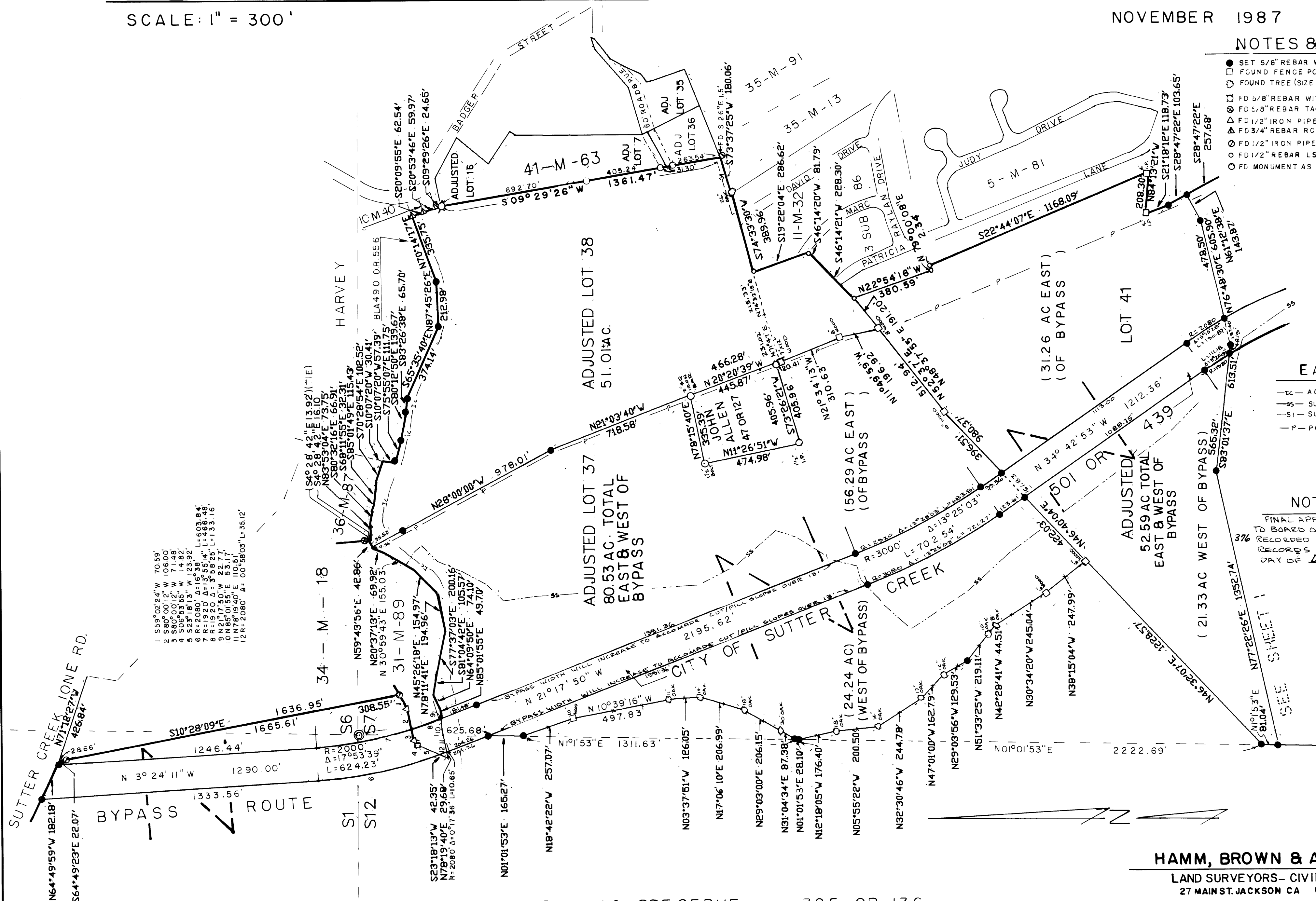
- SET 5/8" REBAR WITH 2" ALUM CAP STAMPED LS 3488
- FOUND FENCE POST (SIZE AS NOTED), TAGGED SAME LS 3488
- FOUND TREE (SIZE AS NOTED), TAGGED SAME LS 3488
- ✱ FD 5/8" REBAR WITH 2" ALUM CAP STAMPED LS 3488
- ⊙ FD 5/8" REBAR TAGGED LS 3488 PER
- △ FD 1/2" IRON PIPE TAGGED LS 3570 PER 31-M-89
- ▲ FD 3/4" REBAR RCE 10761 PER 10-M-40
- FD 1/2" IRON PIPE LS 3488 PER 35-M-13
- FD 1/2" REBAR LS 2902 PER 11-M-32
- FD MONUMENT AS NOTED

## EASEMENTS

- C— ACWA IONE CANAL
- S— SUTTER CREEK SEWER LINE 401 OR 583
- SI— SUTTER CREEK SEWER LINE 252 OR 586
- P— PG&E POWER LINE 26-D-98 & 292 OR 387

## NOTE

FINAL APPROVAL OF THIS MAP SUBJECT TO BOARD OF SUPERVISOR'S RESOLUTION NO. 87-376 RECORDED IN BOOK 531 OF OFFICIAL RECORDS AT PAGE 168 THIS 16TH DAY OF DECEMBER 1987



HAMM, BROWN & ALLEN INC.

LAND SURVEYORS- CIVIL ENGINEER  
27 MAIN ST. JACKSON CA (209) 223-1061

ALLEN AG PRESERVE 325 OR 136

SCALE 1"=300' DATE NOV 1987 W.O. 14 49.19 SHEET 2 OF 2

42-11-31