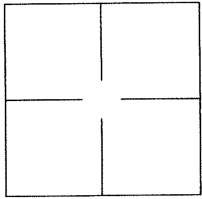


CORNER RECORD

AGENCY INDEX BK 128 PG 89Document Number CR13613City of OAKLANDCounty of ALAMEDA, CaliforniaBrief Legal Description MONUMENT ON LAUREL AVENUE AND SUTER STREET

CORNER TYPE

Government Corner ☐ Control ☒
Meander ☐ Property ☐
Rancho ☐ Other ☐

Date of Survey 2019-06-26

COORDINATES (Optional)

N. _____ E. _____
Elevation _____
Units Metric ☐ U.S. Survey Foot ☐
Horizontal Datum _____
Zone _____ Epoch Date _____
Vertical Datum: _____
☐ Complies with Public Resources Code §§8801-8819
☐ Complies with Public Resources Code §§8890-8902

PLS Act Ref.: ☐ 8765(d) ☒ 8771 ☐ 8773 Other: _____

Corner/
Monument: ☒ Left as found ☐ Established ☐ Rebuilt ☒ Pre-Construction
☐ Found and tagged ☐ Reestablished ☒ Referenced ☐ Post-Construction

Narrative of corner identified and monument as found and set or reset:

☒ See sheet #2 for description(s):

FOUND MONUMENTS AS NOTED ON SHEET 2 REFERENCED PRIOR TO CONSTRUCTION ACTIVITIES.

SURVEYOR'S STATEMENT

This Corner Record was prepared by me or under my direction in conformance with
the Professional Land Surveyor's Act on 13 November, 2019.

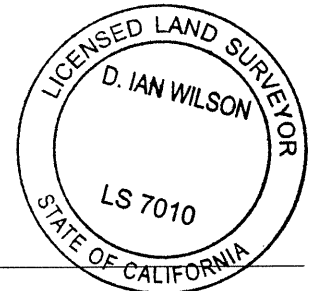
Signed [Signature] P.L.S. or R.C.E. No.: 8040

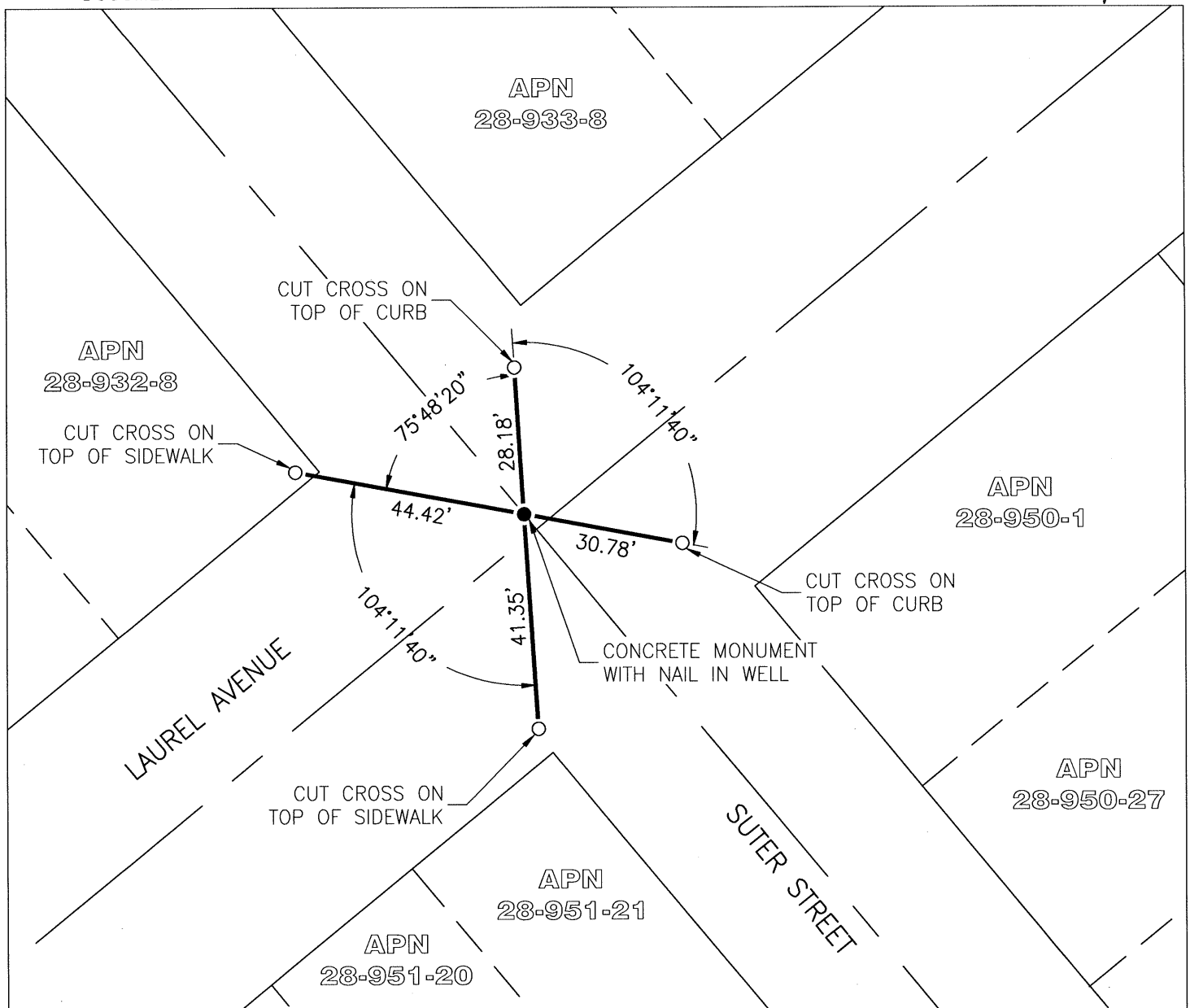
COUNTY SURVEYOR'S STATEMENT

This Corner Record was received NOV 12 2019, 2019 and examined
and filed DEC 02 2019, 2019.

Signed D. Ian Wilson P.L.S. or R.C.E. No.: 7010Title ALAMEDA COUNTY SURVEYOR

County Surveyor's Comment _____





LEGEND

- FOUND MONUMENT AS NOTED
- SET REFERENCE POINTS WITH TAG STAMPED "LS 8040" AS SHOWN
- APN ASSESSOR'S PARCEL NUMBER

SCALE

1" = 30'