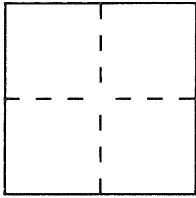


**CORNER RECORD**Document Number 801City of DAKLAND County of ALAMEDA, CaliforniaBrief Legal Description LOT 5 CLAREMONT WOODLAND HEIGHTS (4M82)**CORNER TYPE****COORDINATES**  
(Optional)

Government Corner ☐ Control ☐  
 Meander ☐ Property ☒  
 Rancho ☐ Other ☐  
 Date of Survey AUGUST 20 1996

N. \_\_\_\_\_  
 E. \_\_\_\_\_  
 Zone \_\_\_\_\_ Datum \_\_\_\_\_  
 Elev. \_\_\_\_\_

Corner — Left as found ☐ Found and tagged ☐ Established ☒ Reestablished ☐ Rebuilt ☐

Identification and type of corner found: Evidence used to identify or procedure used to establish or reestablish the corner:

MONUMENTS AND RECORD DATA AS SHOWN ON CLAREMONT  
WOODLAND HEIGHTS (4M 82)

A description of the physical condition of the monument as found and as set or reset: \_\_\_\_\_

SEE ABOVE AND REVERSE SIDE

**SURVEYOR'S STATEMENT**

This Corner Record was prepared by me or under my direction in conformance with  
 the Land Surveyors' Act on SEPTEMBER 1 1996.

Signed Andreas Deak L.S. or R.C.E. Number L.S. 4739

**COUNTY SURVEYOR'S STATEMENT**

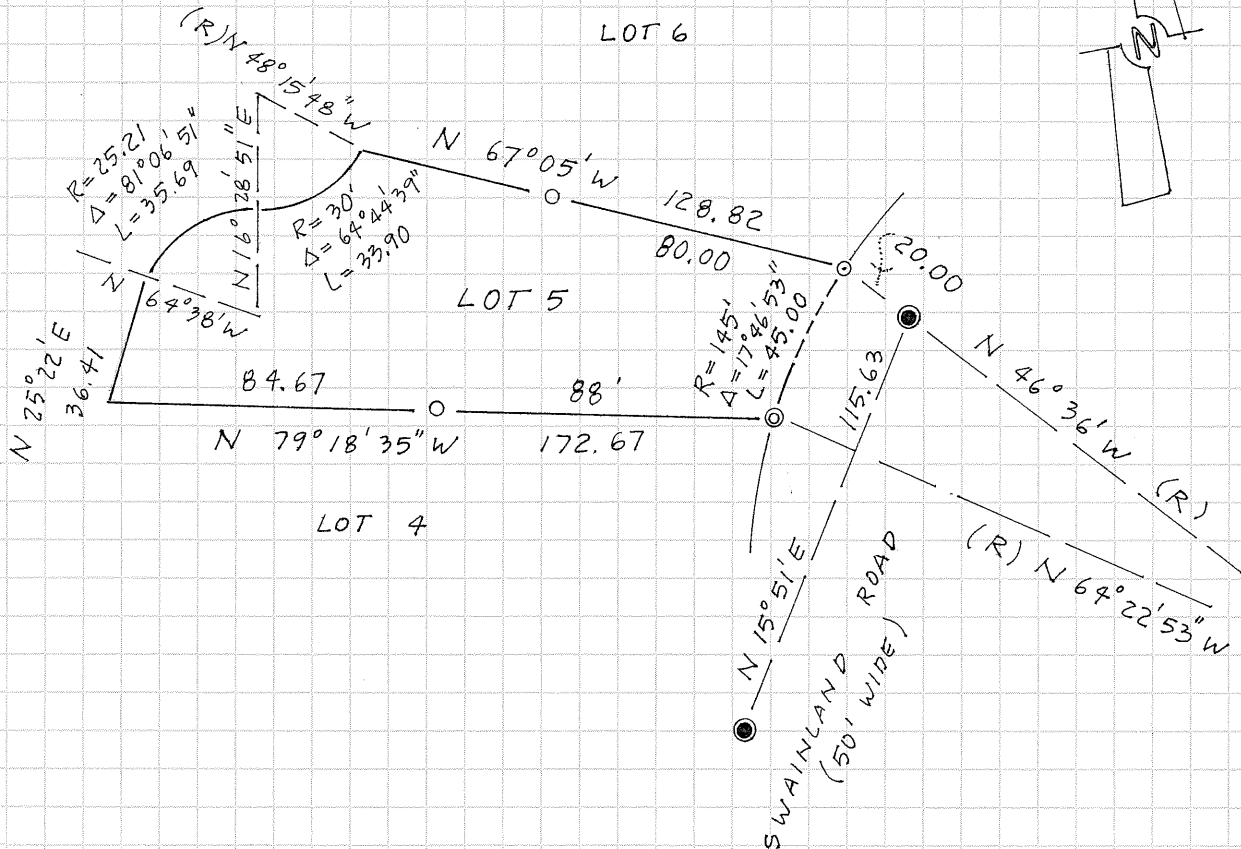
This Corner Record was received 9-3-96 and examined  
 and filed 9-19-96.

Signed Russell R. Penland, Jr. Title Deputy County Surveyor



County Surveyor's Comment \_\_\_\_\_

SCALE 1"=50'



### LEGEND

- STANDARD CITY OF OAKLAND MONUMENT. COPPER TACK IN CONCRETE, ABOUT 12" BELOW STREET LEVEL IN MONUMENT WELL, FOUND.
- 1/2" IRON PIPE WITH PLASTIC CAP L.S. 4739 SET FLUSH WITH GROUND
- ◎ 3/4" IRON PIPE WITH PLASTIC CAP L.S. 4739 SET FLUSH WITH GROUND
- 3/8" REBAR WITH PLASTIC CAP L.S. 4739 SET FLUSH WITH GROUND