

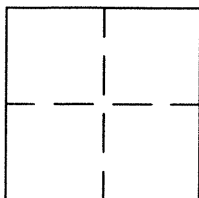
CORNER RECORD

BK

60

PG

17

APN No. 412 - 91 - 5 - (Optional)Document Number CR 6332Unincorporated Eden TownshipCounty of Alameda, CaliforniaBrief Legal Description At the Intersection of Ginger Ave. and Hunter Ave., Tract 1100, Bk.31, Pg.40,

CORNER TYPE

Government Corner ☐Control ☐Meander ☐Property ☐Rancho ☐Other ☐Date of Survey 06/24/2014

COORDINATES (Optional)

N. 2,071,905.4E. 6,094,282.5Zone 3 NAD27 ☐ NAD83 ☒NAD 83 Epoch 2014.25Elev. Corner - Left as found ☐ Found and tagged ☐ Established ☐ Reestablished ☐ Not Found ☐

In compliance with Section 8771 of the Professional Land Surveyors' Act, this corner record is being filed to ESTABLISH / REESTABLISH the position of an existing monument PRIOR ☒ / SUBSEQUENT to street or highway reconstruction. (Use this portion only when applicable.)

Identification and type of corner found: Evidence used to identify or procedure used to establish or reestablish the corner: As shown on Page 2 of this corner record, the intersection of the RP lines with 4 interior angles about the monument and 4 distances from the RP's to the monument.

A description of the physical condition of the monument as found and as set or reset:

SURVEYOR'S STATEMENT

This Corner Record was prepared by me or under my direction in conformance with the Land Surveyors' Act on 8/8 20 14.

Signed Robert A. Machado L.S. or R.C.E. Number 7380

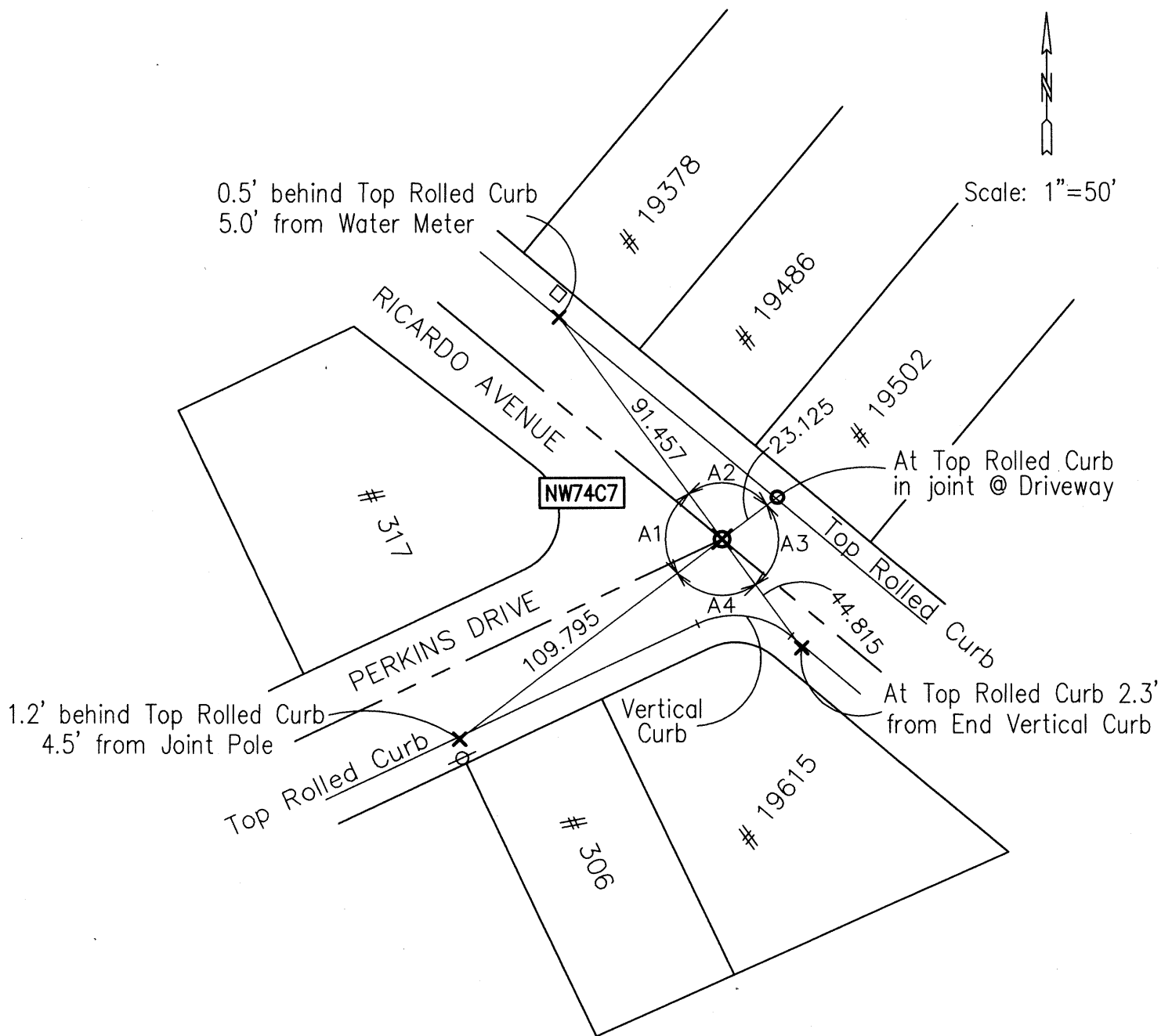
COUNTY SURVEYOR'S STATEMENT

This Corner Record was received 7-7 20 14 and examined and filed 8-6 20 14.

Signed [Signature] Title County SurveyorCounty Surveyor's Comment

Job Number: R 23367

Spec No: 2257



LEGEND

- ✕ Set Chiseled "X"
- ⊗ Found Standard Monument
- Set Mag Nail
- Water Meter
- ⊖ Joint Pole

ANGLE TABLE

A1	92°16'19"
A2	87°43'41"
A3	92°16'19"
A4	87°43'41"

REFERENCES

Tract 1100 31 M 40 4/26/1951