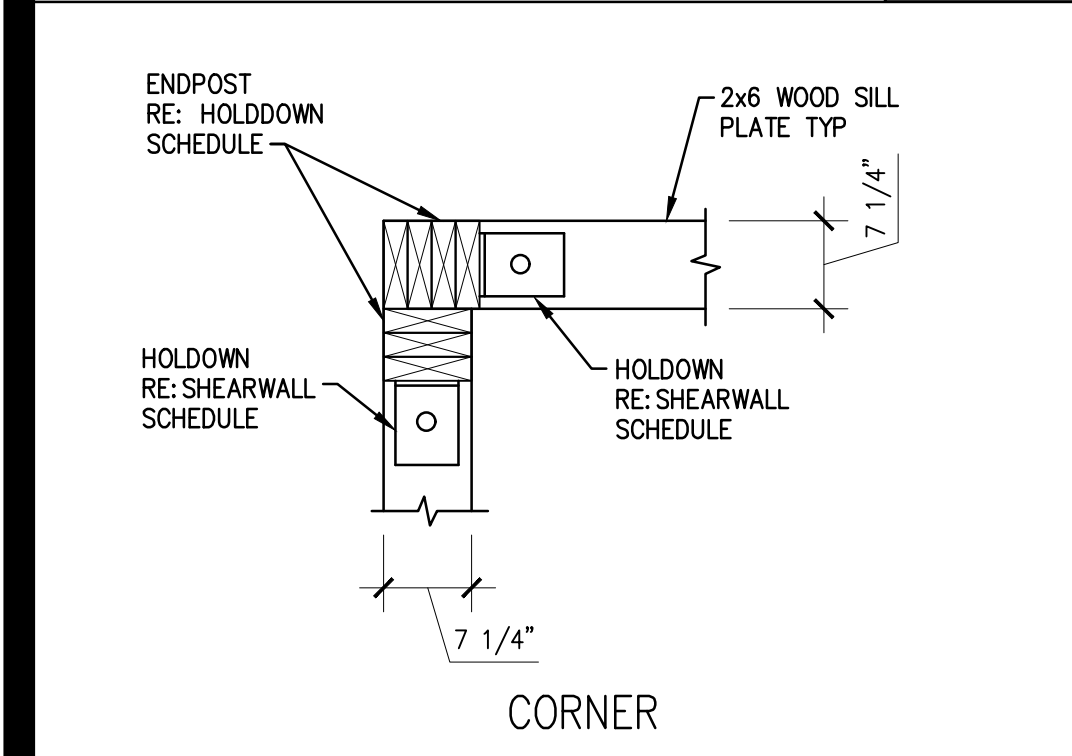
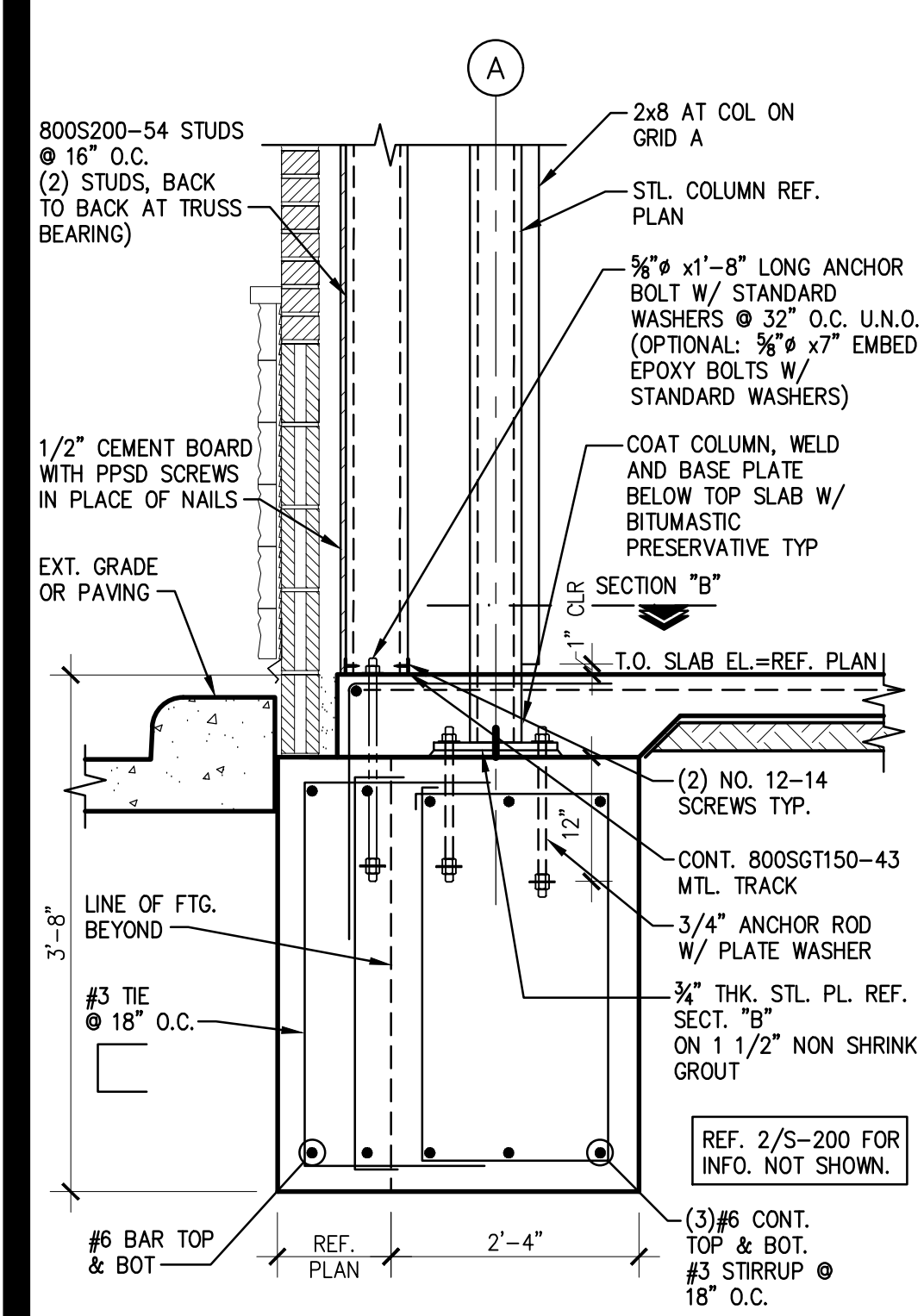
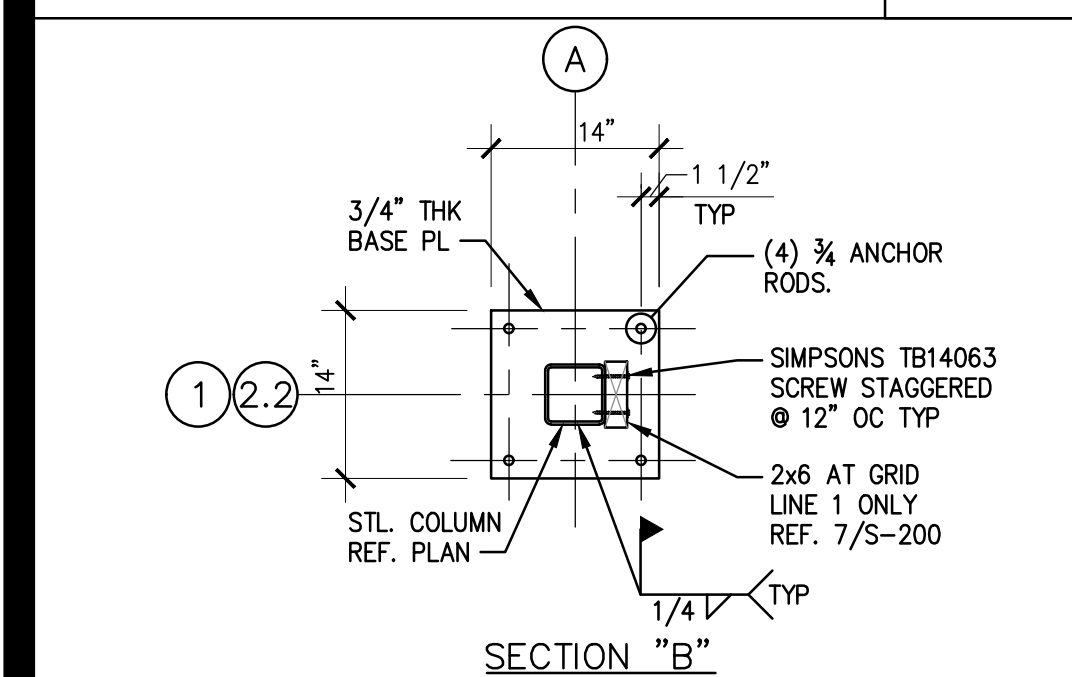


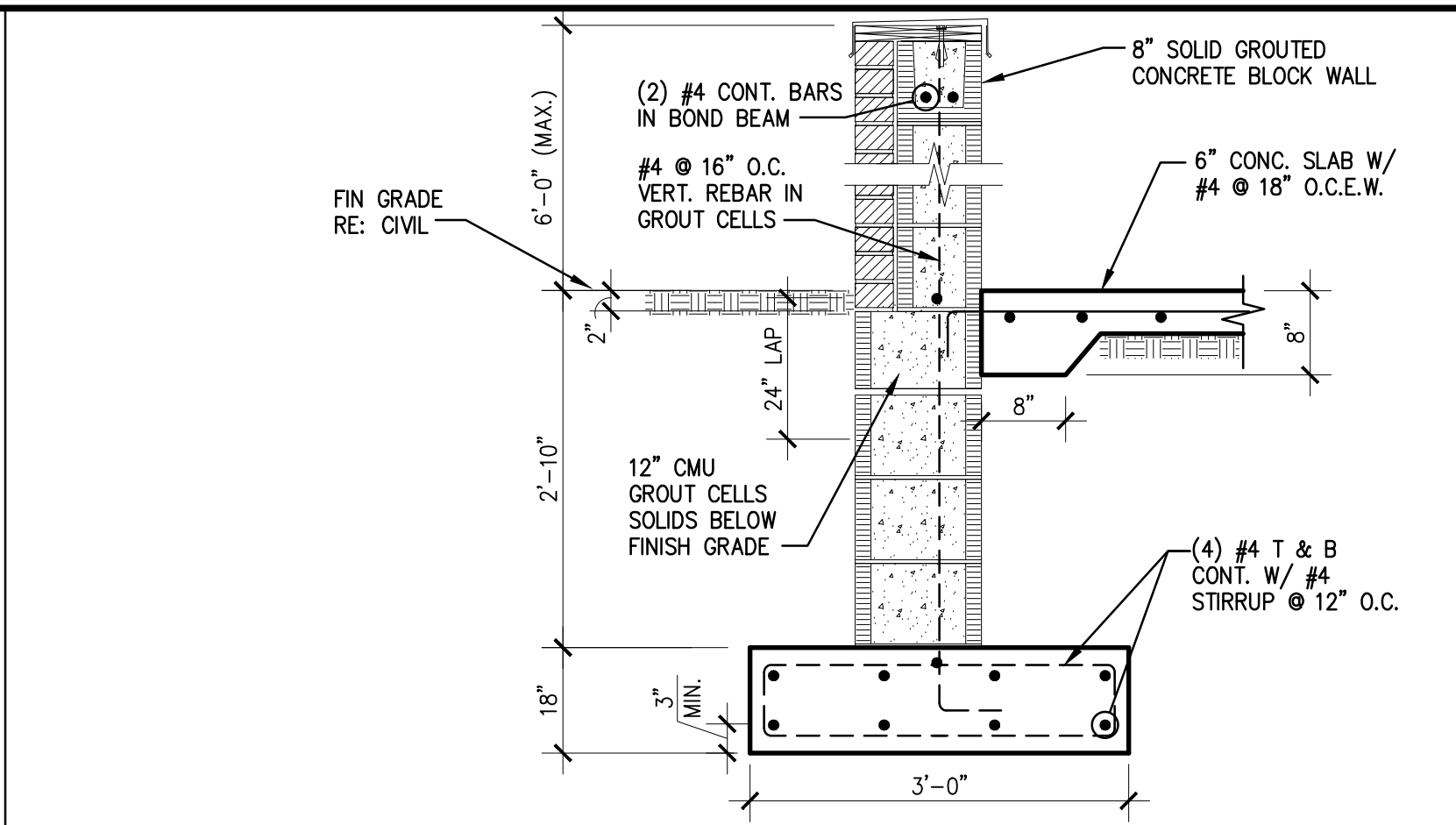
SLAB AT NON BEARING WALL 14
SCALE: N.T.S. S-200



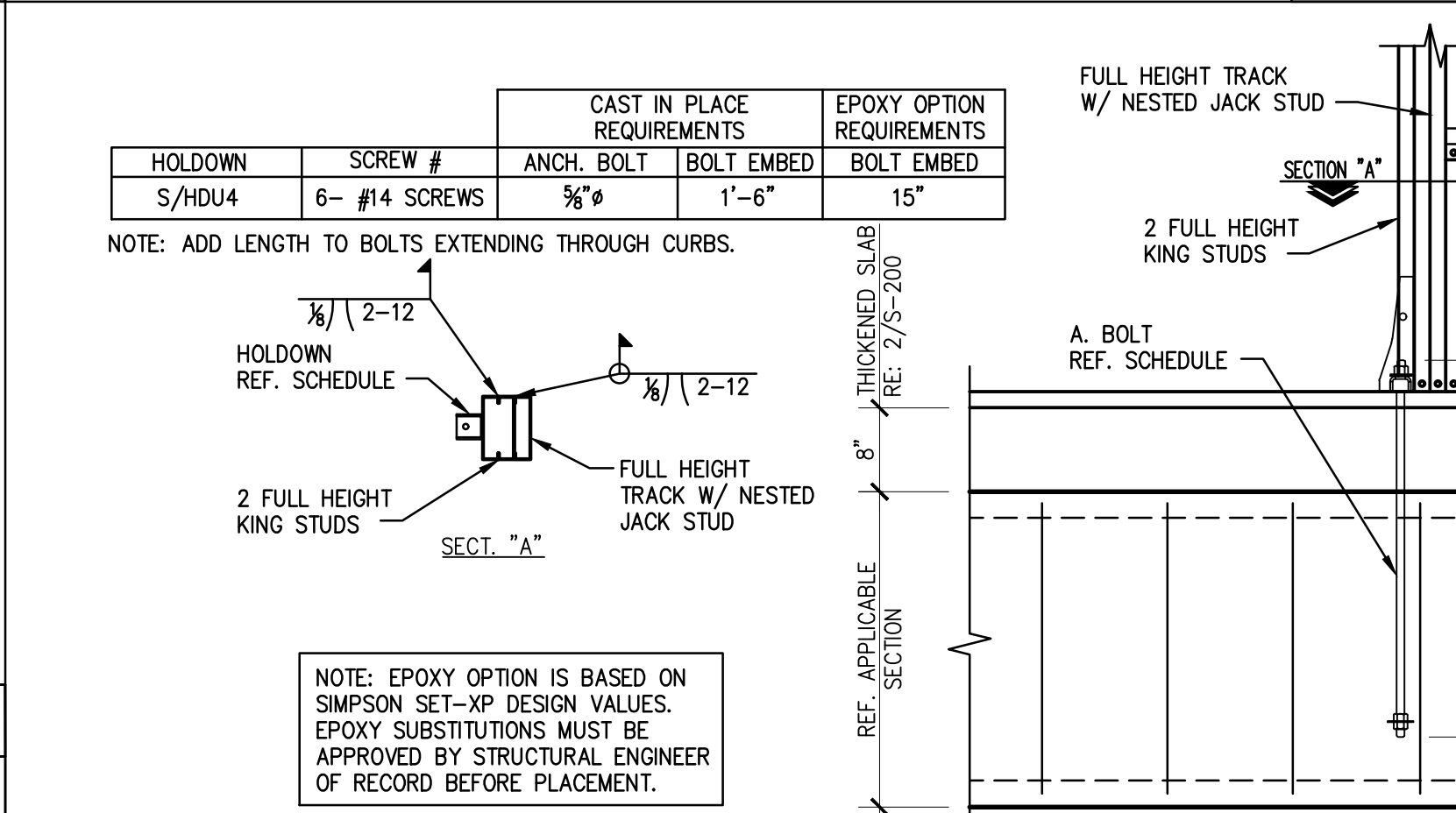
CORNER HOLDOWN DETAIL 13
SCALE: 3/4"=1'-0" S-200



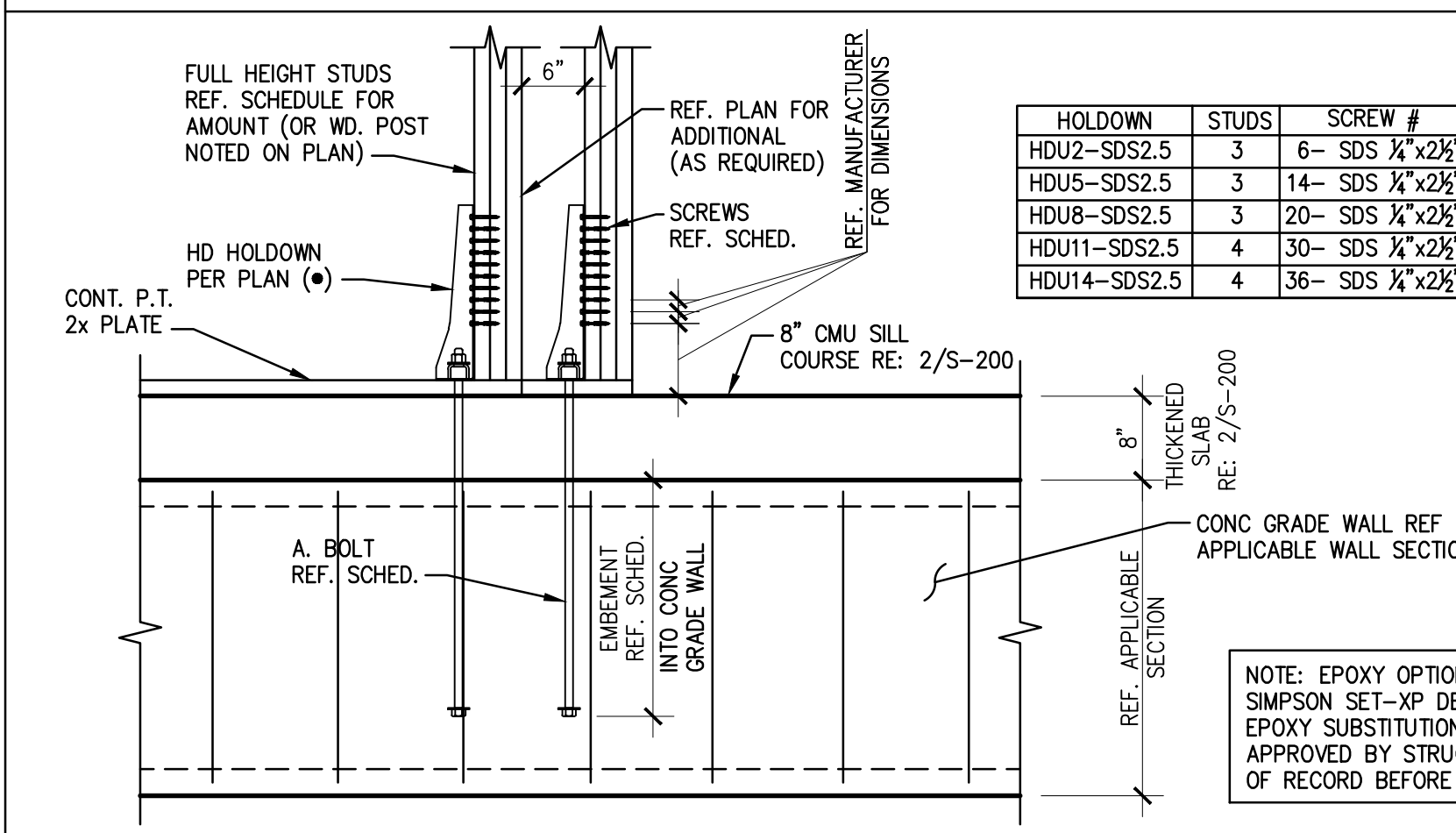
SECTION @ CORNER COLUMN 12
SCALE: 3/4"=1'-0" S-200



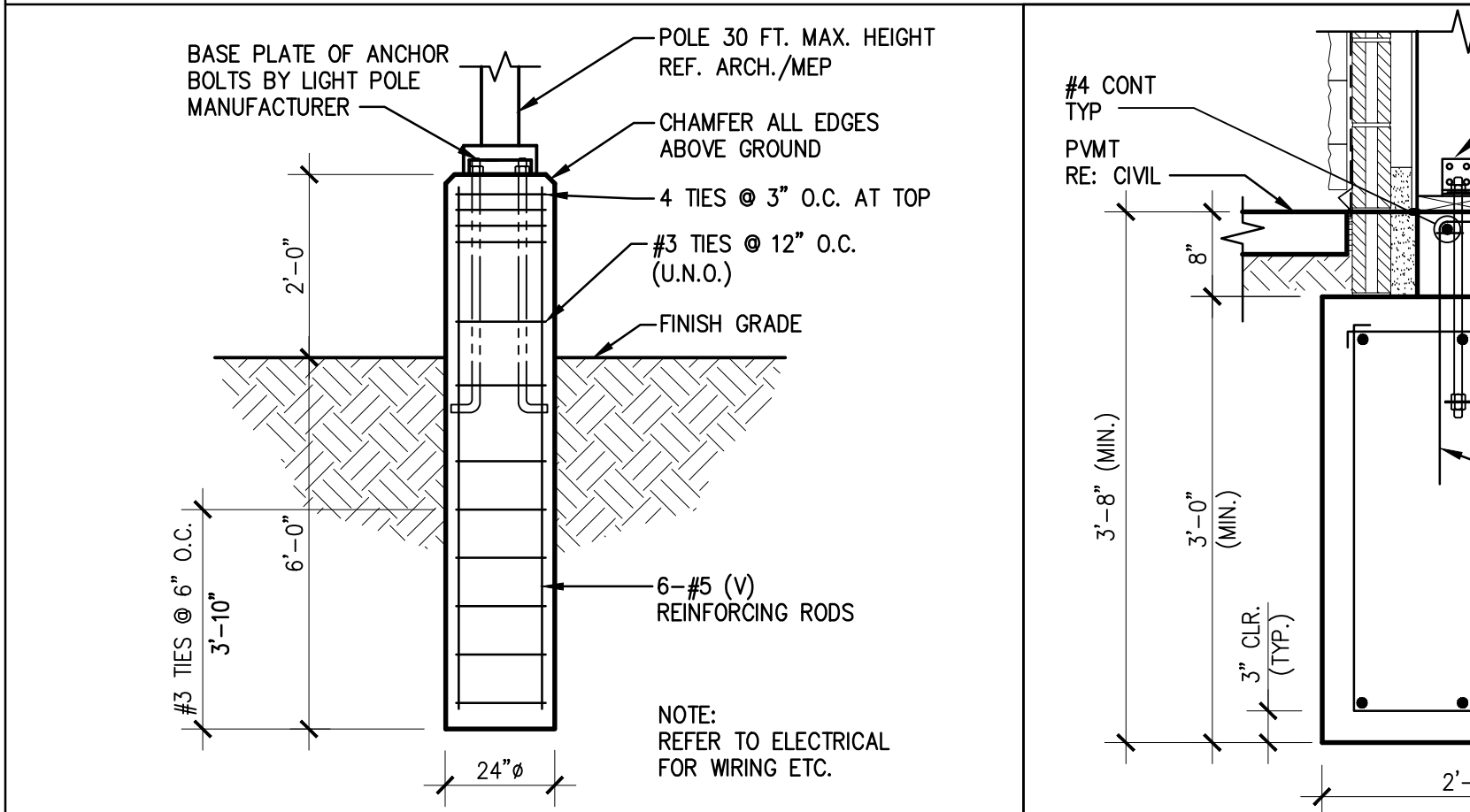
TRASH ENCLOSURE WALL 11
SCALE: 3/4"=1'-0" S-200



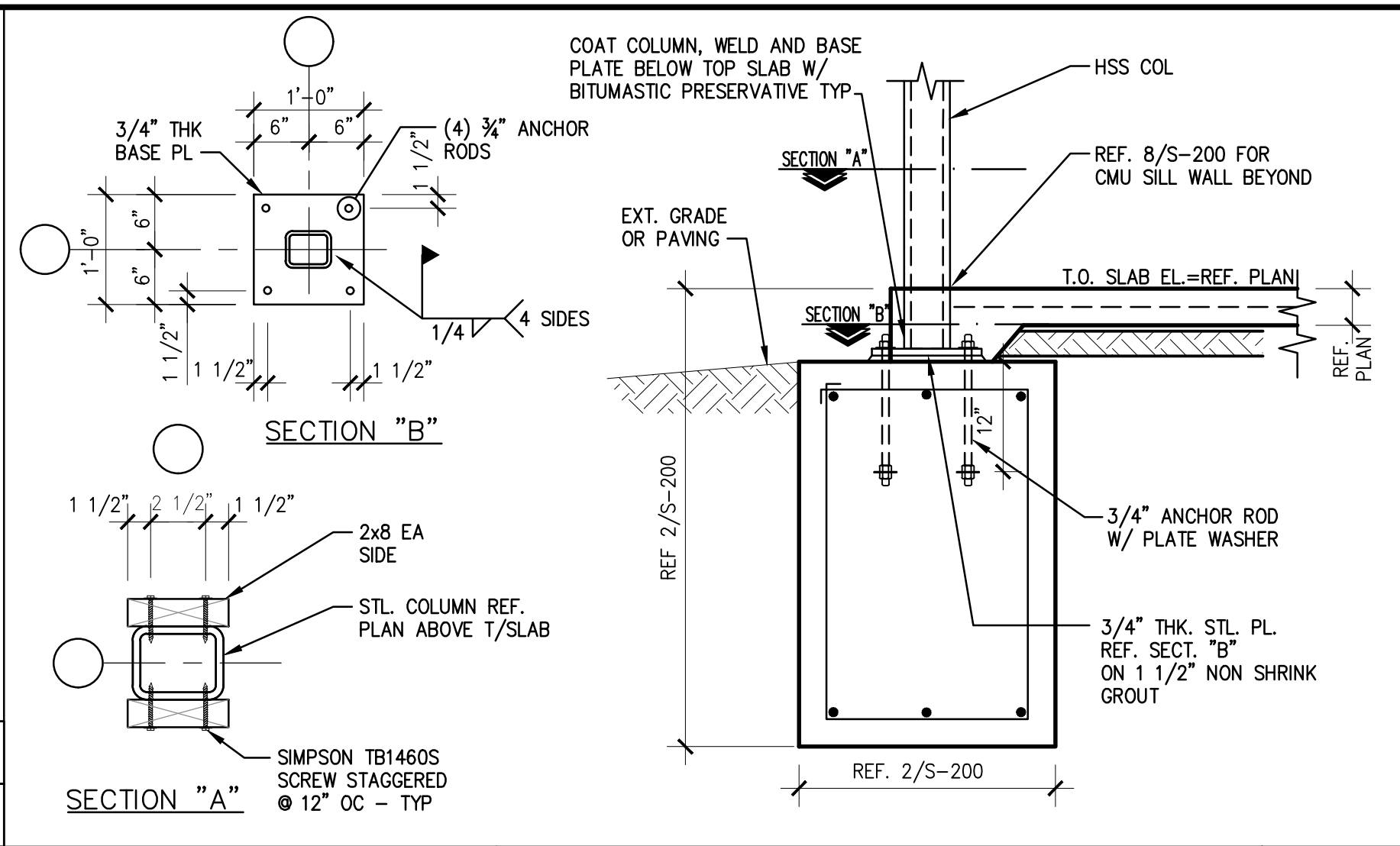
TYPICAL HOLDOWN DETAIL- LIGHT GAGE 10
SCALE: 3/4"=1'-0" S-200



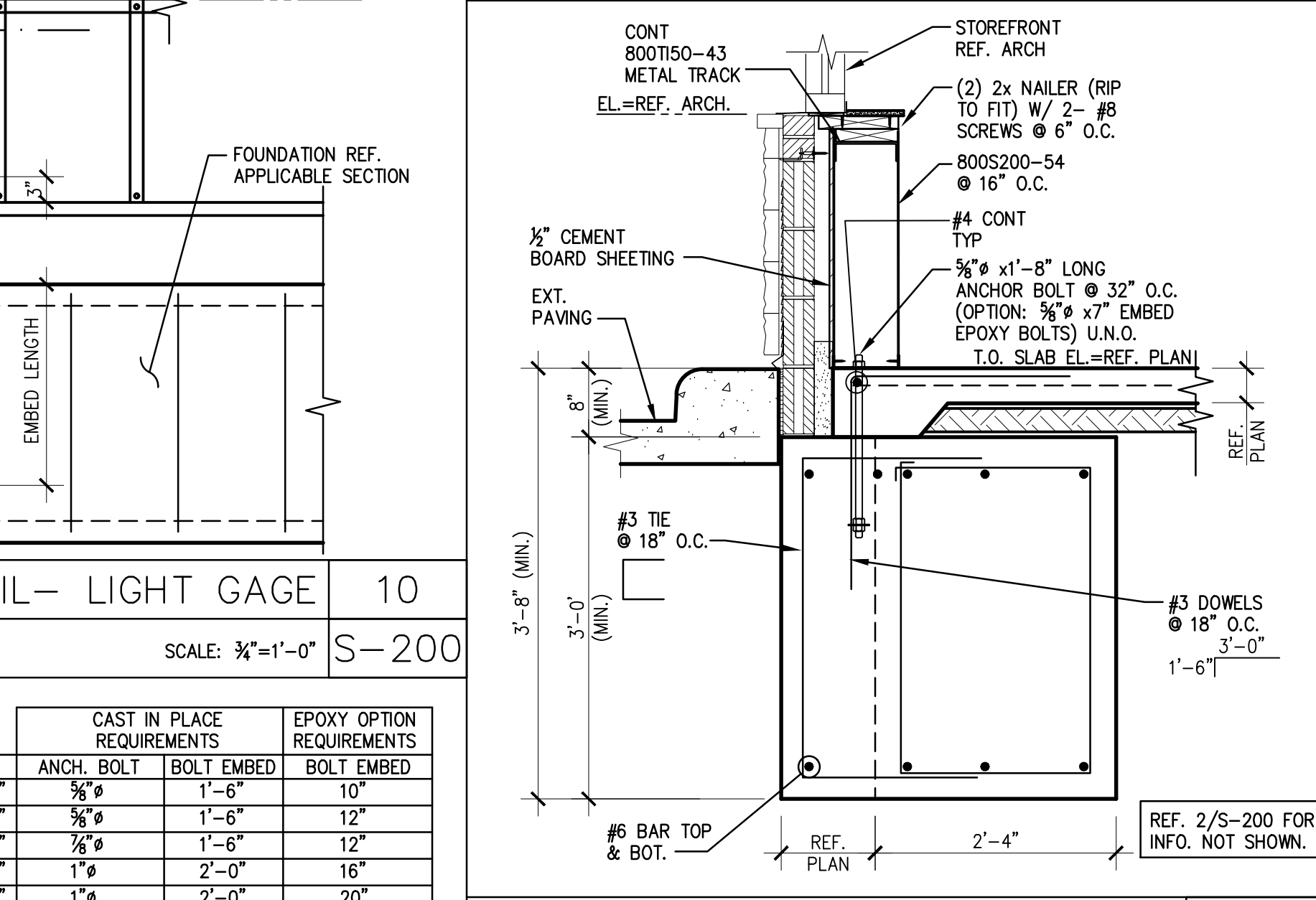
TYPICAL HOLDOWN DETAIL- WOOD 9
SCALE: N.T.S. S-200



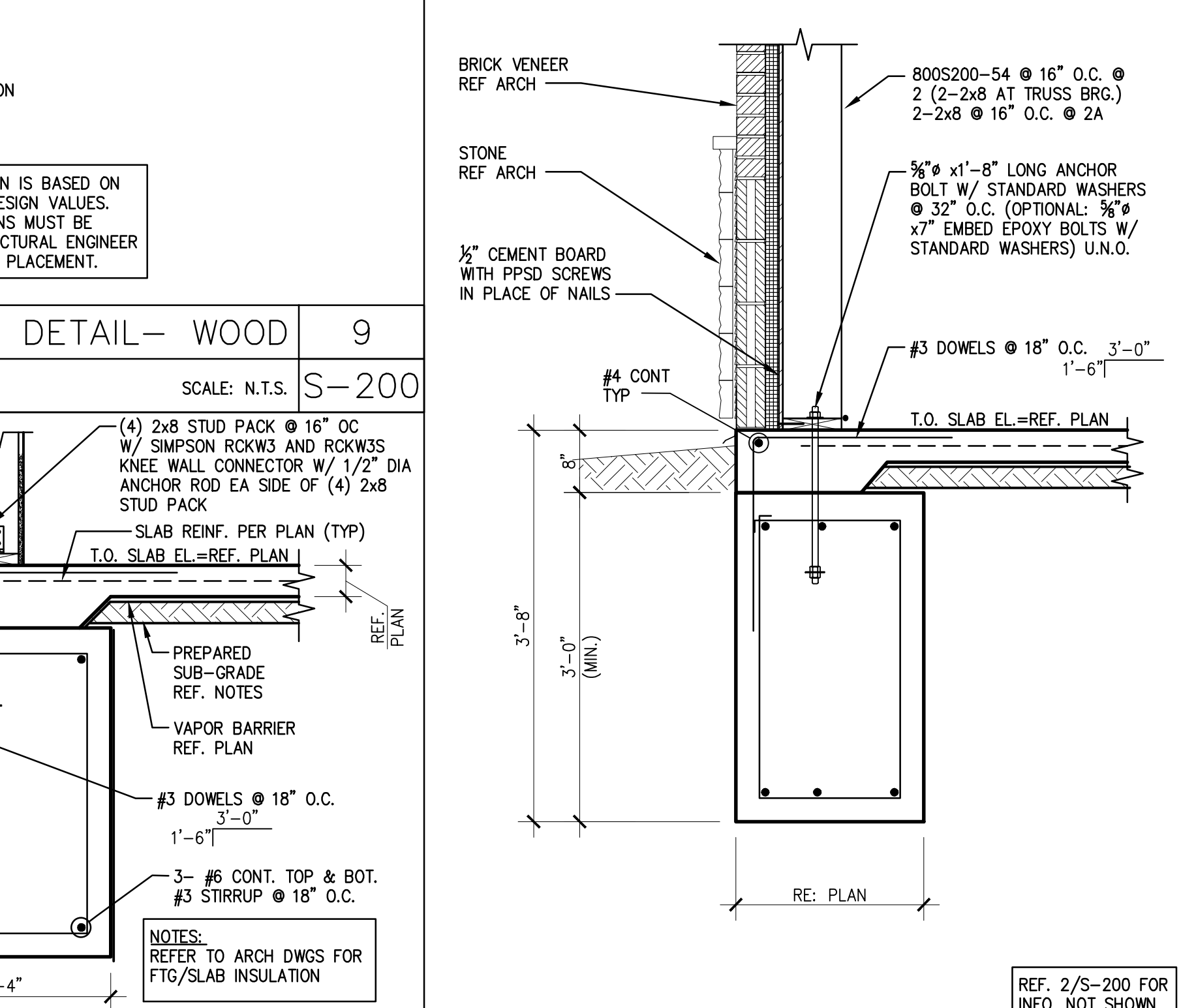
TYPICAL LIGHT POLE SECTION 15
SCALE: 3/4"=1'-0" S-200



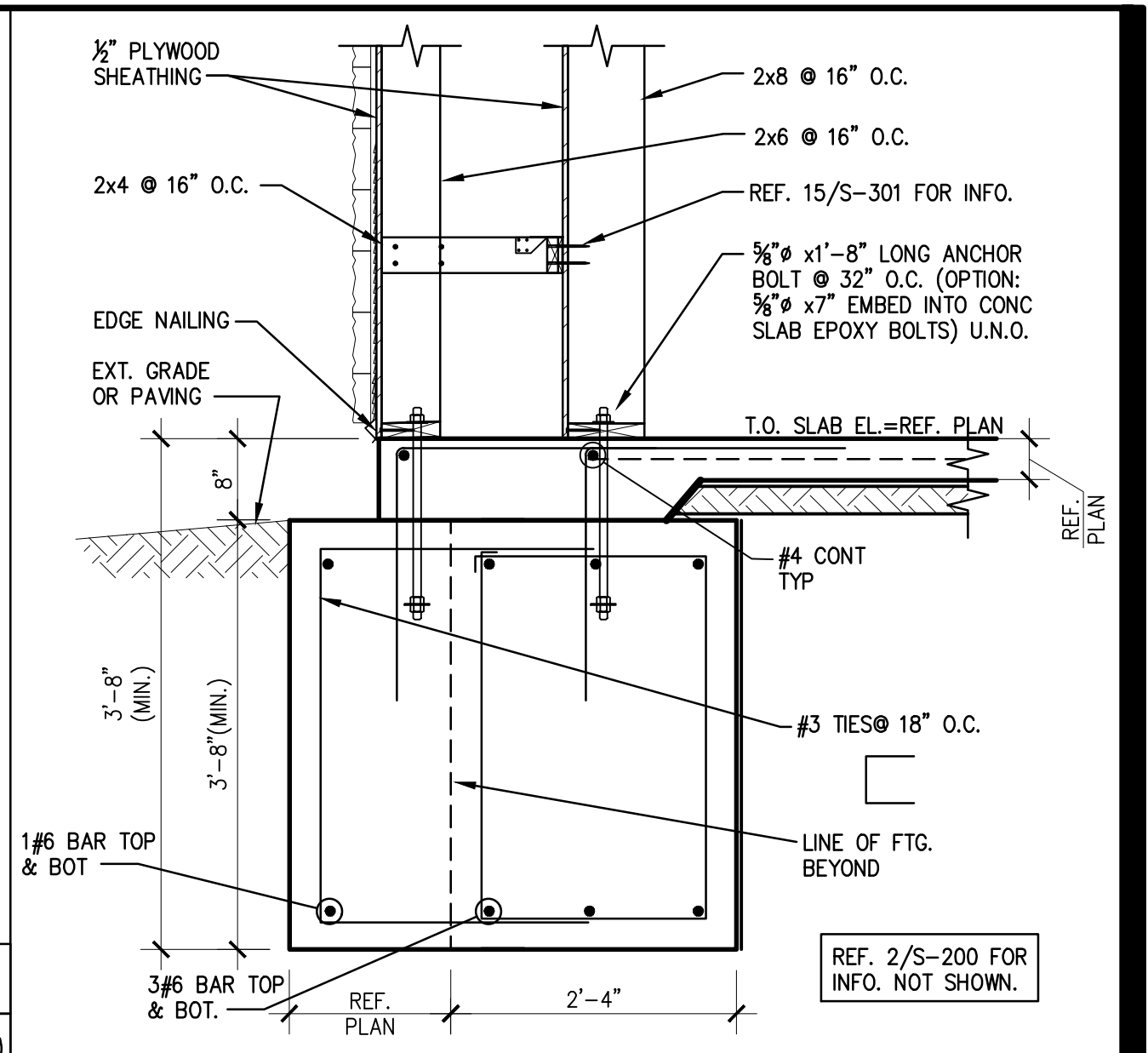
SECTION 7
SCALE: 3/4"=1'-0" S-200



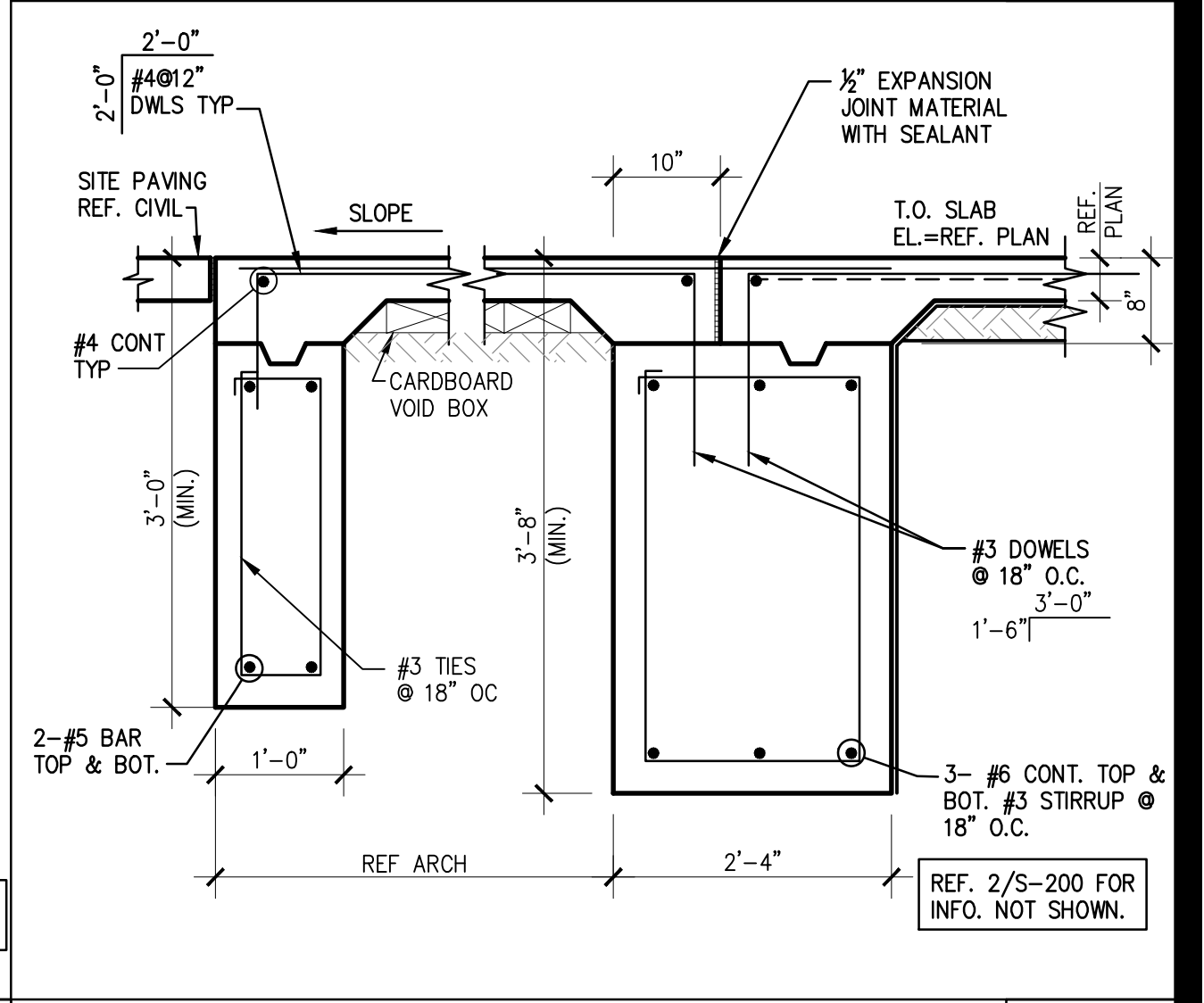
SECTION 6
SCALE: 3/4"=1'-0" S-200



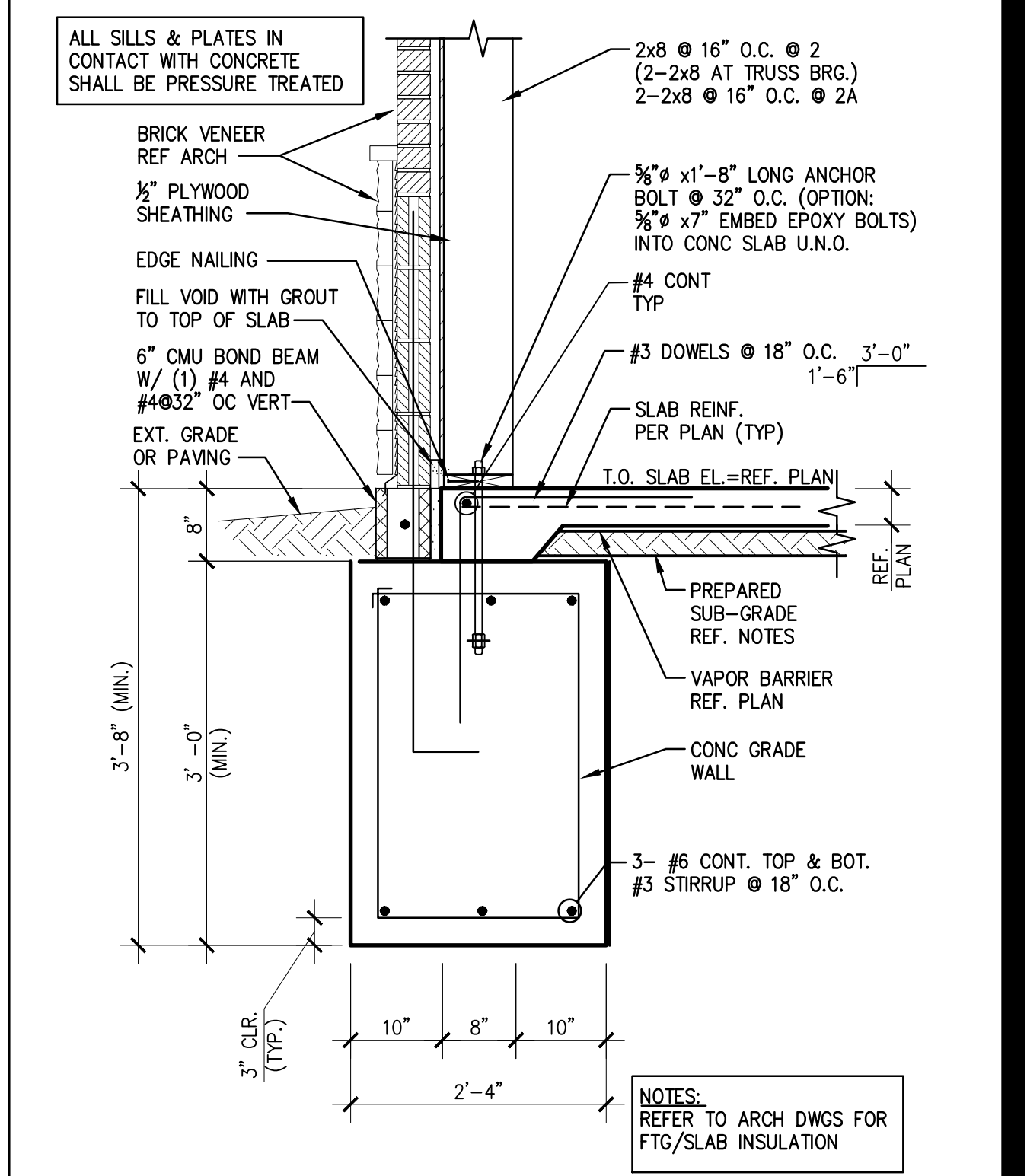
SECTION @ STONE EXTERIOR WALL 5
SCALE: 3/4"=1'-0" S-200



SECTION 4
SCALE: 3/4"=1'-0" S-200



SECTION 3
SCALE: 3/4"=1'-0" S-200



SECTION @ BRICK EXTERIOR WALL 2, 2A
SCALE: 3/4"=1'-0" S-200



PANDA EXPRESS, INC.
1683 Walnut Grove Ave.
Rosemead, California
91770
Telephone: 626.799.9898
Facsimile: 626.372.8288

All ideas, designs, arrangement and plans indicated or represented by this drawing are the property of Panda Express Inc. and were created for use on this specific project. None of these ideas, designs, arrangements or plans may be used by or disclosed to any person, firm, or corporation without the written permission of Panda Express Inc.

REVISIONS:

ISSUE DATE:

STATE PERMIT 06.07.21

DRAWN BY: D. GRIFFIN

PANDA PROJECT #: D8060

ARCH PROJECT #: JCDT20-0240



NORR
ARCHITECTS PLANNERS PLUMBERS

PANDA EXPRESS
TRUE WARM & WELCOME
390 W Spring Mill Pointe Dr.
Westfield, IN 46074

S-200

FOUNDATION DETAILS

TRUE WARM & WELCOME 2300 R5