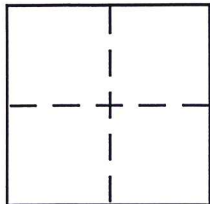


CORNER RECORD

Document Number CR401City of _____ County of Napa, CaliforniaBrief Legal Description Parcel "C", 15 RS 77, Record of Survey of E.F. Wright
APN 034-080-009

CORNER TYPE

Government Corner ☐ Control ☐
Meander ☐ Property ☒
Rancho ☐ Other ☐
Date of Survey 7-6-2016

COORDINATES (Optional)

N. _____
E. _____
Zone _____ NAD27 ☐ NAD83 ☐
NAD83 Epoch _____
Elev. _____
Vert. Datum: NGVD29 ☐ NAVD88 ☐
Meas. Units: Metric ☐ Imperial ☒

Corner – Left as found ☐ Found and tagged ☐ Established ☐ Reestablished ☐ Rebuilt ☐

Identification and type of corner found: Evidence used to identify or procedure used to establish or reestablish the corner:

The found iron pipes at the corners of Parcel "C" were used to
set the most southerly corner of Parcel "C", per 15 RS 77.
All found corners are in good condition, except the northeast
corner, which is bent.

A description of the physical condition of the monument as found and as set or reset:

The most southerly corner of Parcel "C" was destroyed by
the southerly neighbor's driveway construction. A nail and tag
was set in the asphalt driveway.

SURVEYOR'S STATEMENT

This Corner Record was prepared by me or under my direction in conformance with

the Land Surveyor's Act on October 27 2016Signed Christopher K. Cole P.L.S or R.C.E. No. 5769

COUNTY SURVEYOR'S STATEMENT

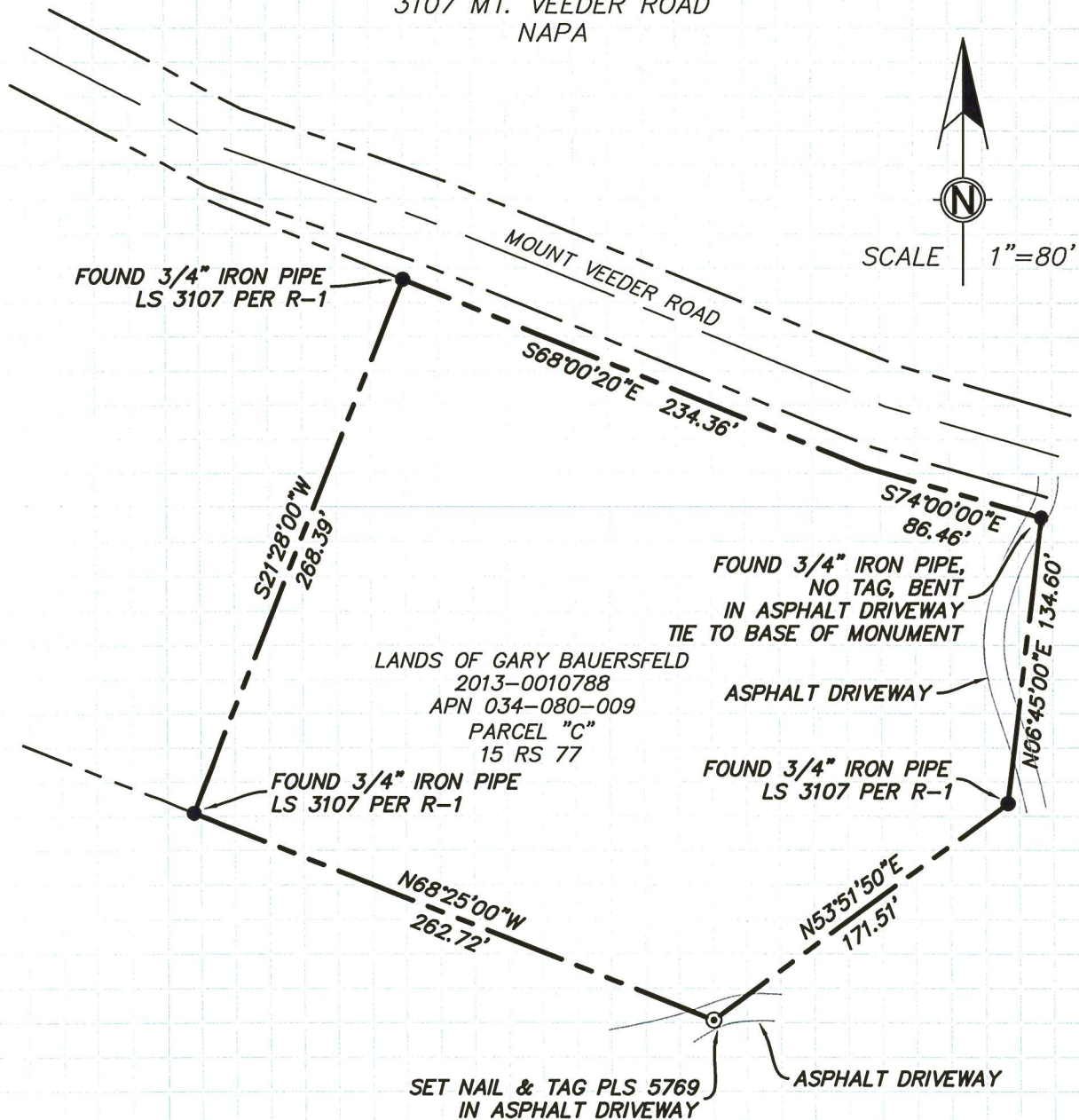
This Corner Record was received OCTOBER 14, 2016and examined and filed OCTOBER 28, 2014Signed Danielle L. Goshert P.L.S or R.C.E. No. 8491Title DEPUTY COUNTY SURVEYOR

County Surveyor's Comment _____

401

CORNER RECORD FOR THE LANDS OF GARY BAUERSFELD

APN 034-080-009
3107 MT. VEEDER ROAD
NAPA



LEGEND

NOTE: ALL DIMENSIONS SHOWN ARE RECORD AND MEASURED
PER R-1

R-1 15 RS 77, N.C.R.
PLS PROFESSIONAL LAND SURVEYOR
⊙ SET NAIL AND TAG, PLS 5769
● FOUND MONUMENT AS NOTED PER R-1

PREPARED BY:
TERRA FIRMA SURVEYS, INC.
P.O. BOX 533
ST. HELENA CA 94574
PHONE: (707) 963-7565

DATE: October 27, 2016