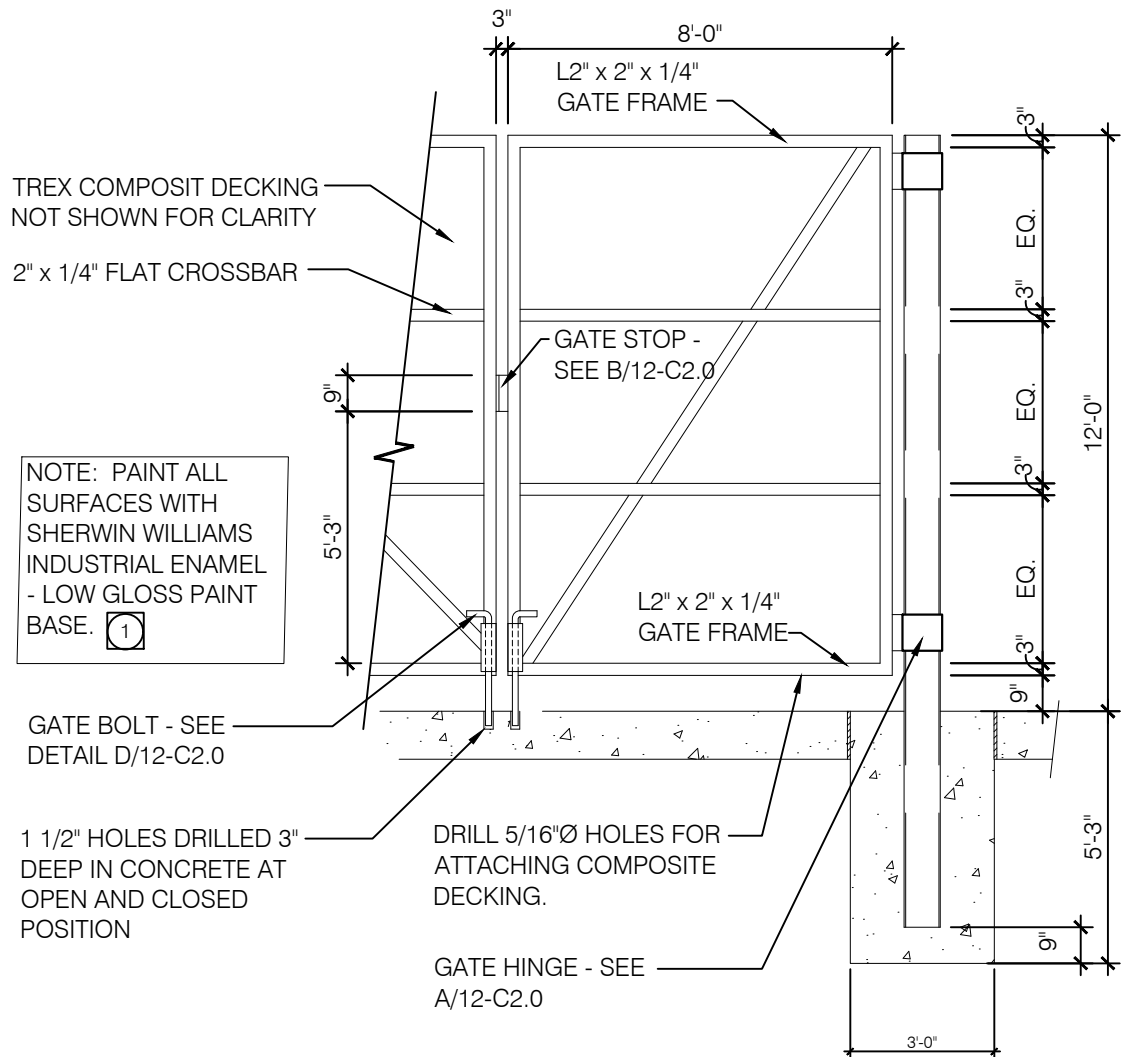
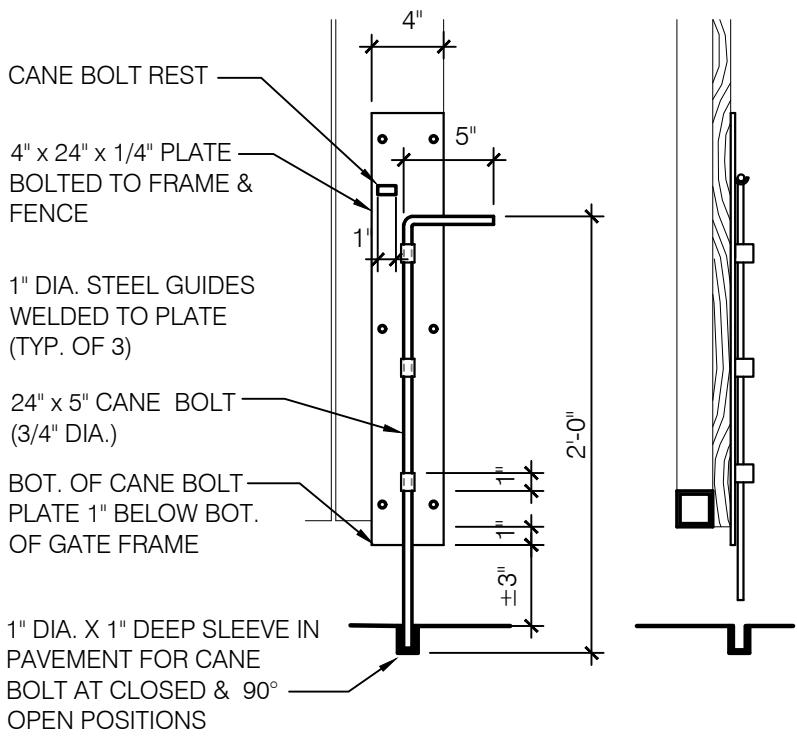


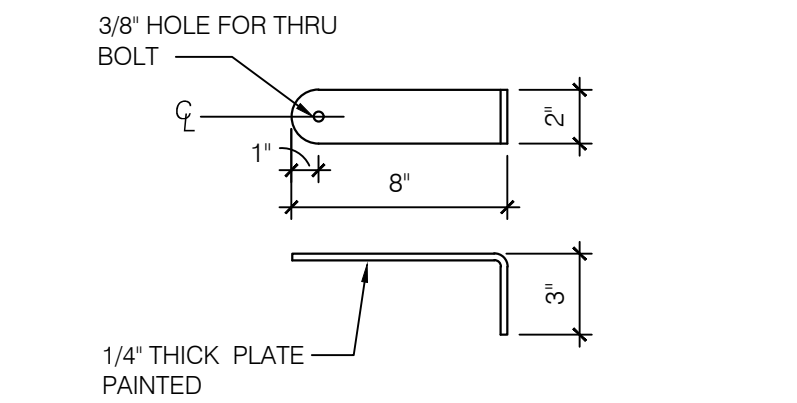
GATE COLUMN FOOTING 1/2" = 1'-0" 18



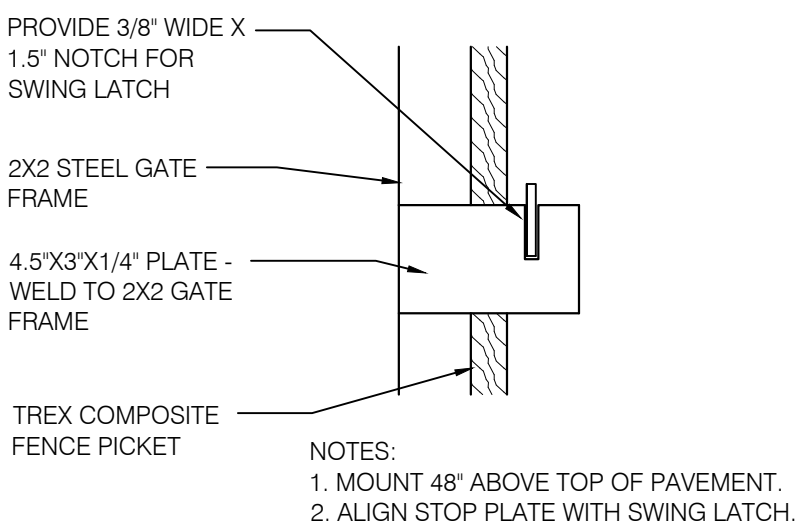
GATE DETAIL 3/8" = 1'-0" 14



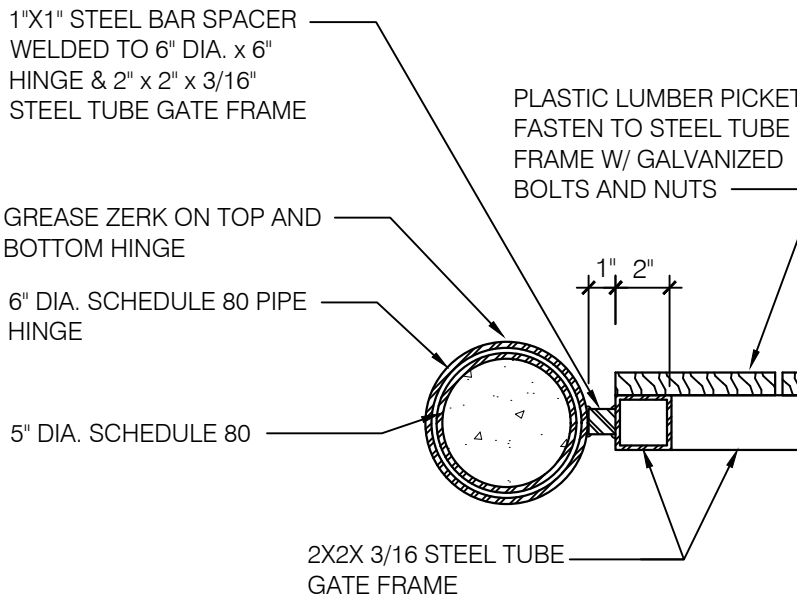
CANE BOLT (1 PER GATE)



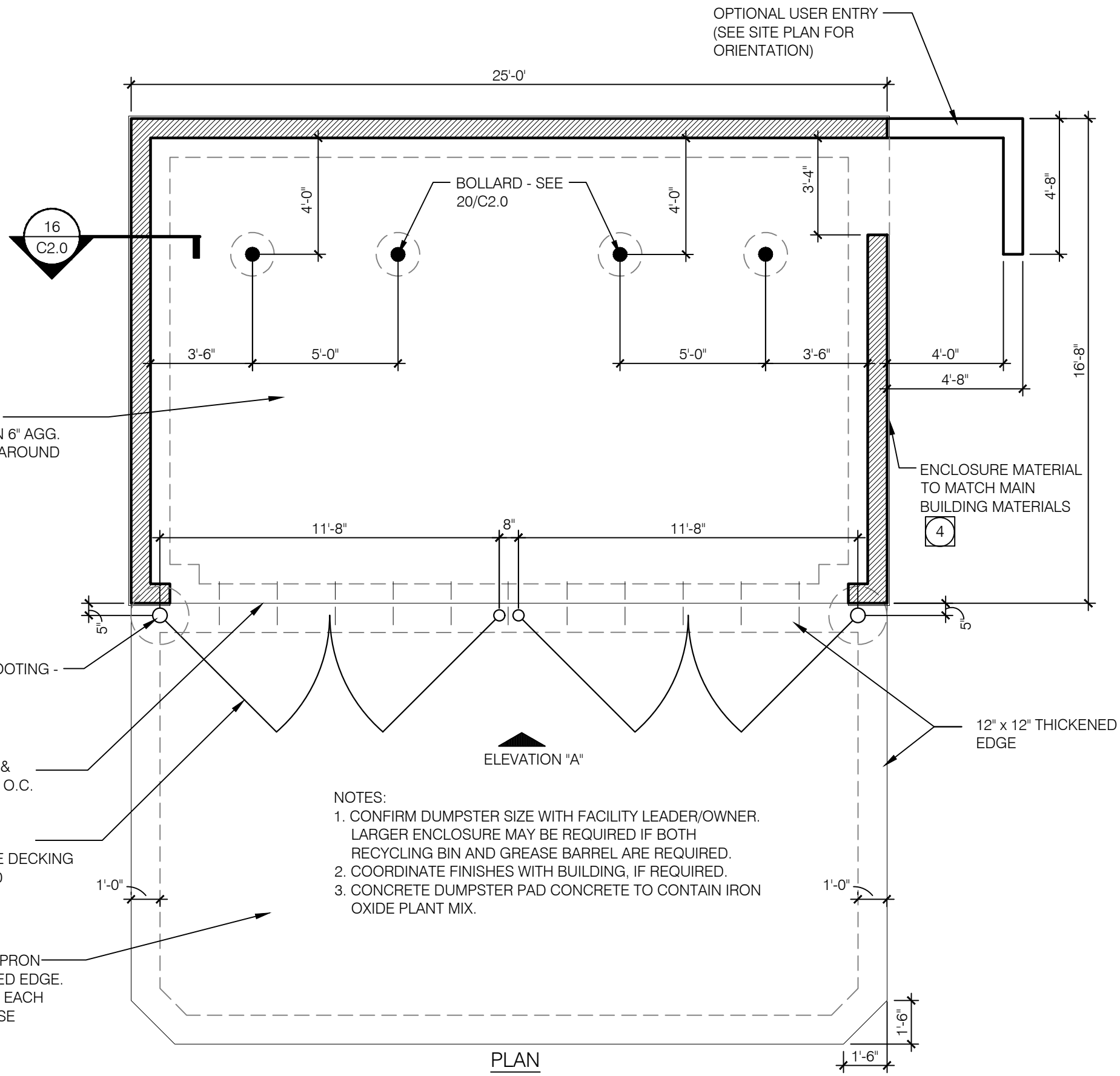
GATE HANDLE



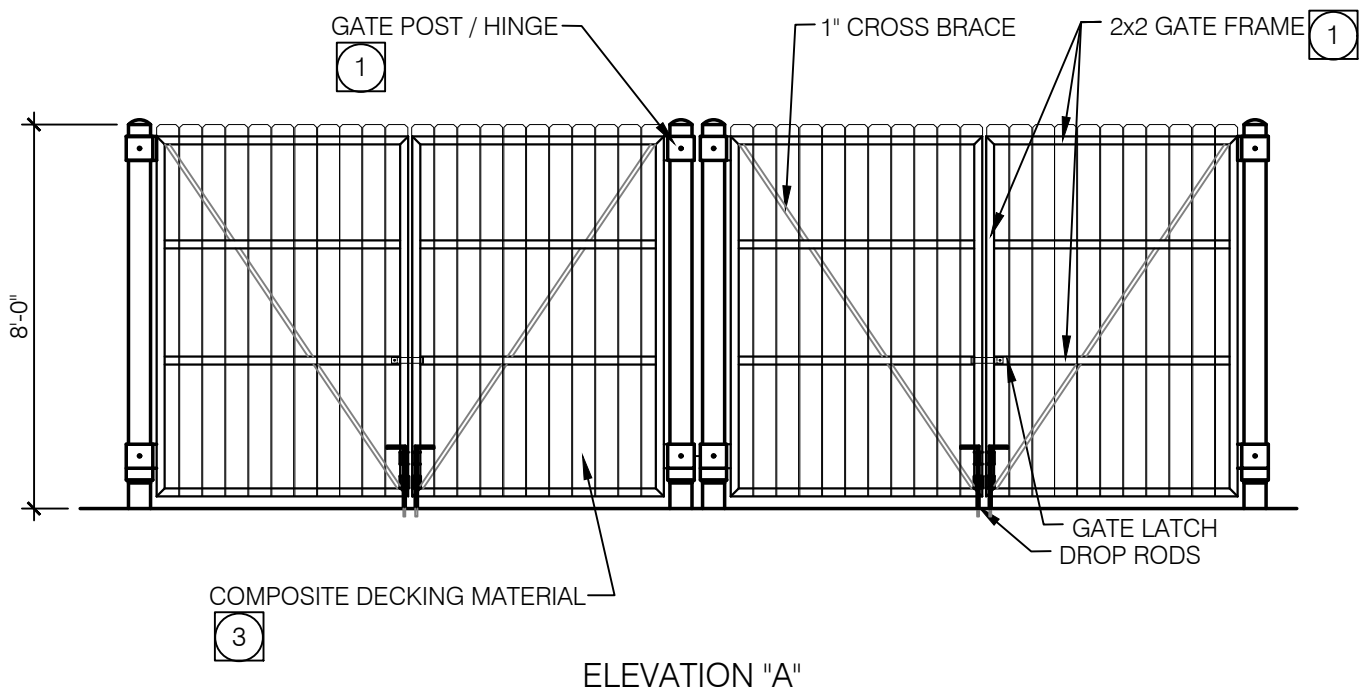
STOP PLATE SECTION



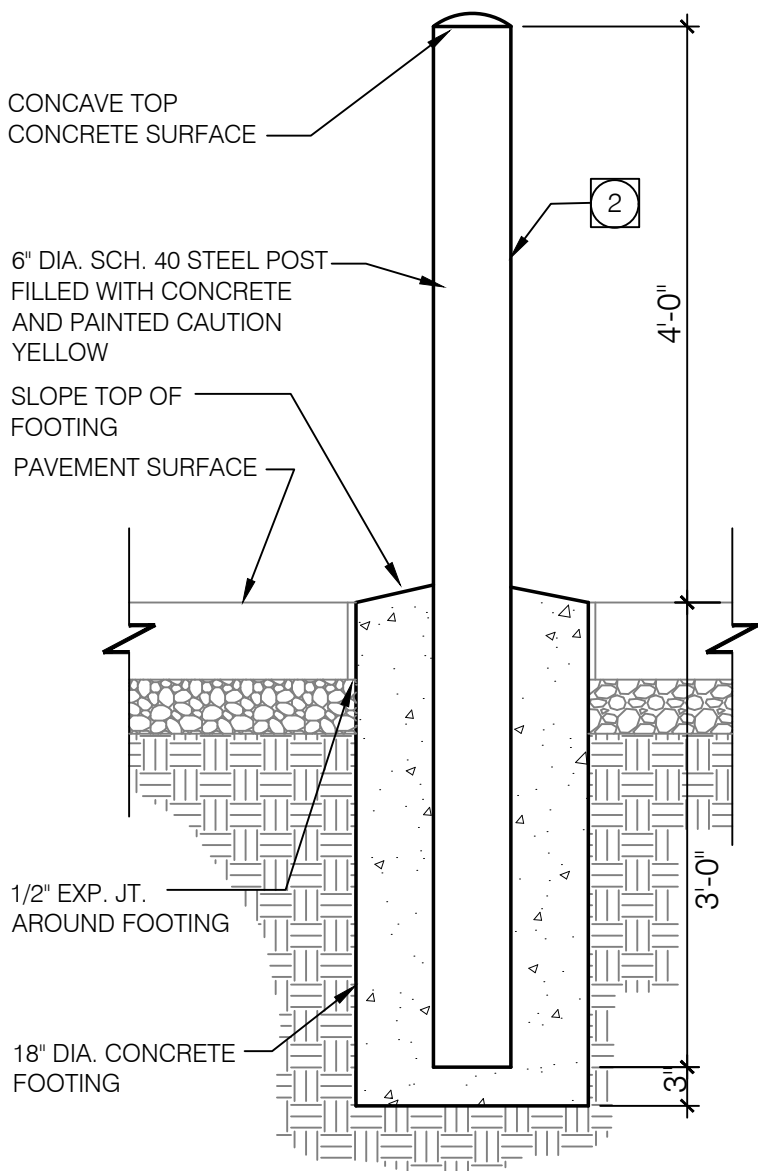
GATE HINGE DETAIL



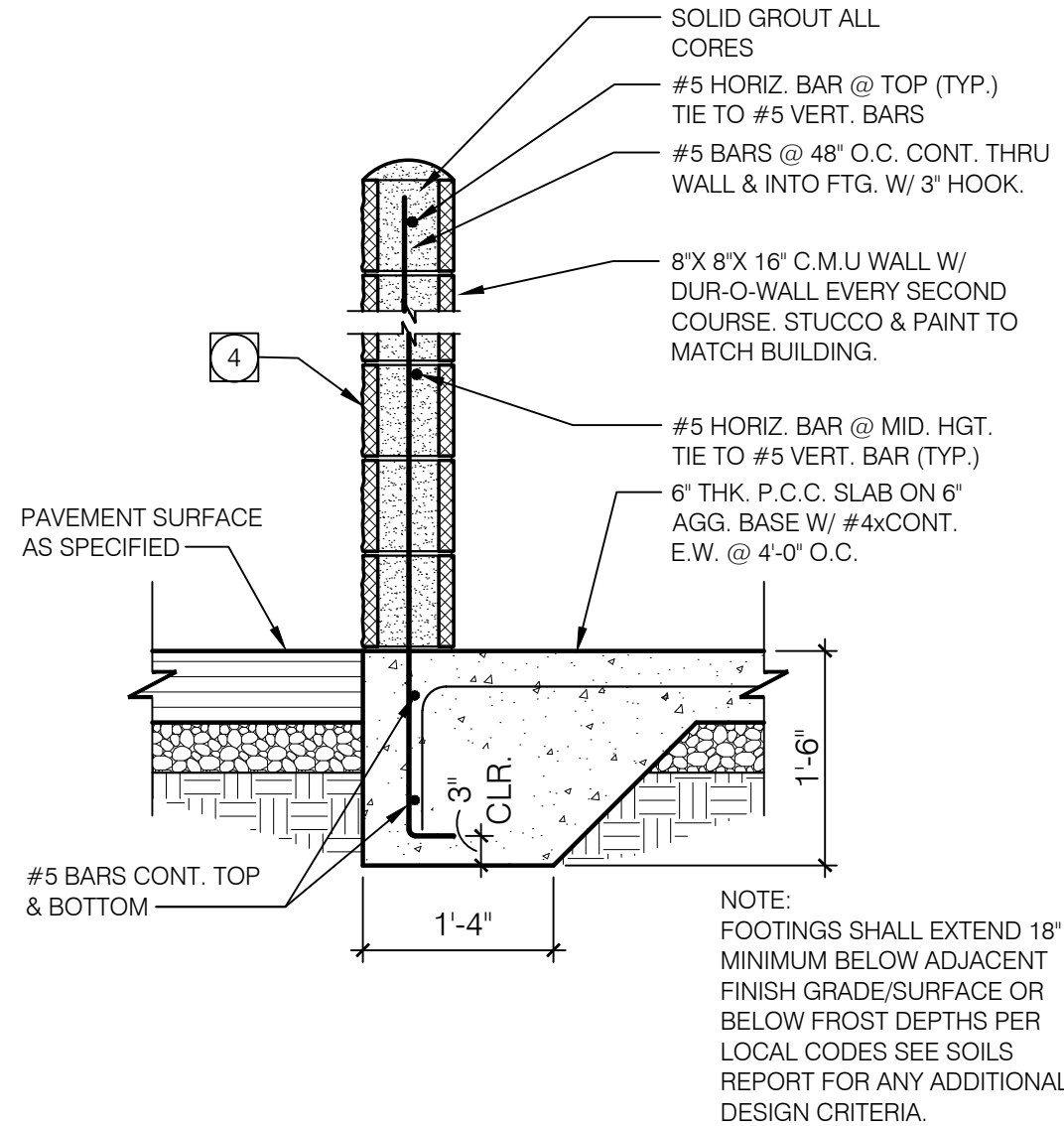
DUMPSTER PLAN 1/4" = 1'-0" A



FRONT ELEVATION 1/4" = 1'-0" 3



BOLLARD DETAIL 3/4" = 1'-0" 20



WALL SECTION 3/4" = 1'-0" 16

GATE DETAILS VARIES 12

GATE HARDWARE: ALL HARDWARE AND ACCESSORIES SHALL BE HEAVY GALVANIZED.

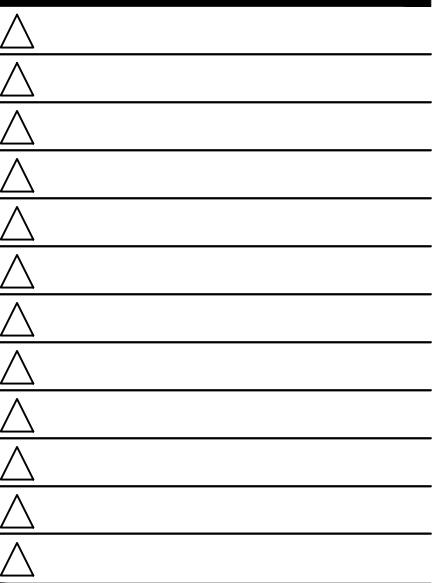
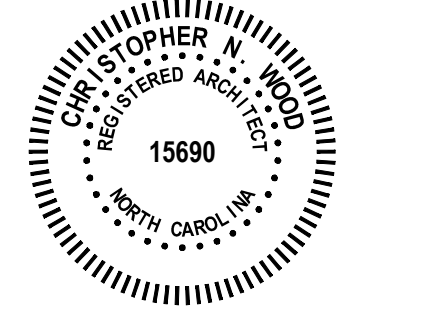
GATE STOP: MUSHROOM TYPE OR FLUSH PLATE WITH ANCHORS SET IN CONCRETE TO ENGAGE THE CENTER DROP ROD OR PLUNGER BAR.

GATE NOTES: (4) EQUAL WIDE x 8'-0" HIGH MTL. GATES, TREX SELECT COMPOSITE SQUARE PROFILE DECKING BOARDS W/ T.S. 1 X .1875 BAR CROSS BRACING WELD AND GRIND SMOOTH. ALL CONNECTIONS, TYP. PRIME AND PAINT ALL STEEL COMPONENTS.

ENCLOSURE NOTES N.T.S. 8

SYMBOL	AREA	MANUFACTURER	COLOR
1	GATE FRAME COLOR	SHERWIN WILLIAMS	CYBERSPACE (SW7076)
2	PIPE BOLLARDS	SHERWIN WILLIAMS	CAUTION YELLOW
3	GATE FENCING	TREX SELECT	WINCHESTER GREY
4	DUMPSTER WALL	SHERWIN WILLIAMS	WORLDLY GRAY (SW7043)

SCHEDULE N.T.S. 4



CONTRACT DATE: 06/09/2022
BUILDING TYPE: END. MED 40
PLAN VERSION: SEPT 2021
SITE NUMBER: 315911
STORE NUMBER:

TACO BELL
ROCKFISH RD. (NEAR BELSHAW WAY)
FAYETTEVILLE, NC 28306
"Stoney Point"



ENDEAVOR 2.0

DUMPSTER
PLAN/DETAIL

C2.0