

# TRACT N° 36-73 MAMMOTH CREEK IN UNINCORPORATED TERRITORY OF MONO COUNTY, CALIFORNIA.

JUNE 1975

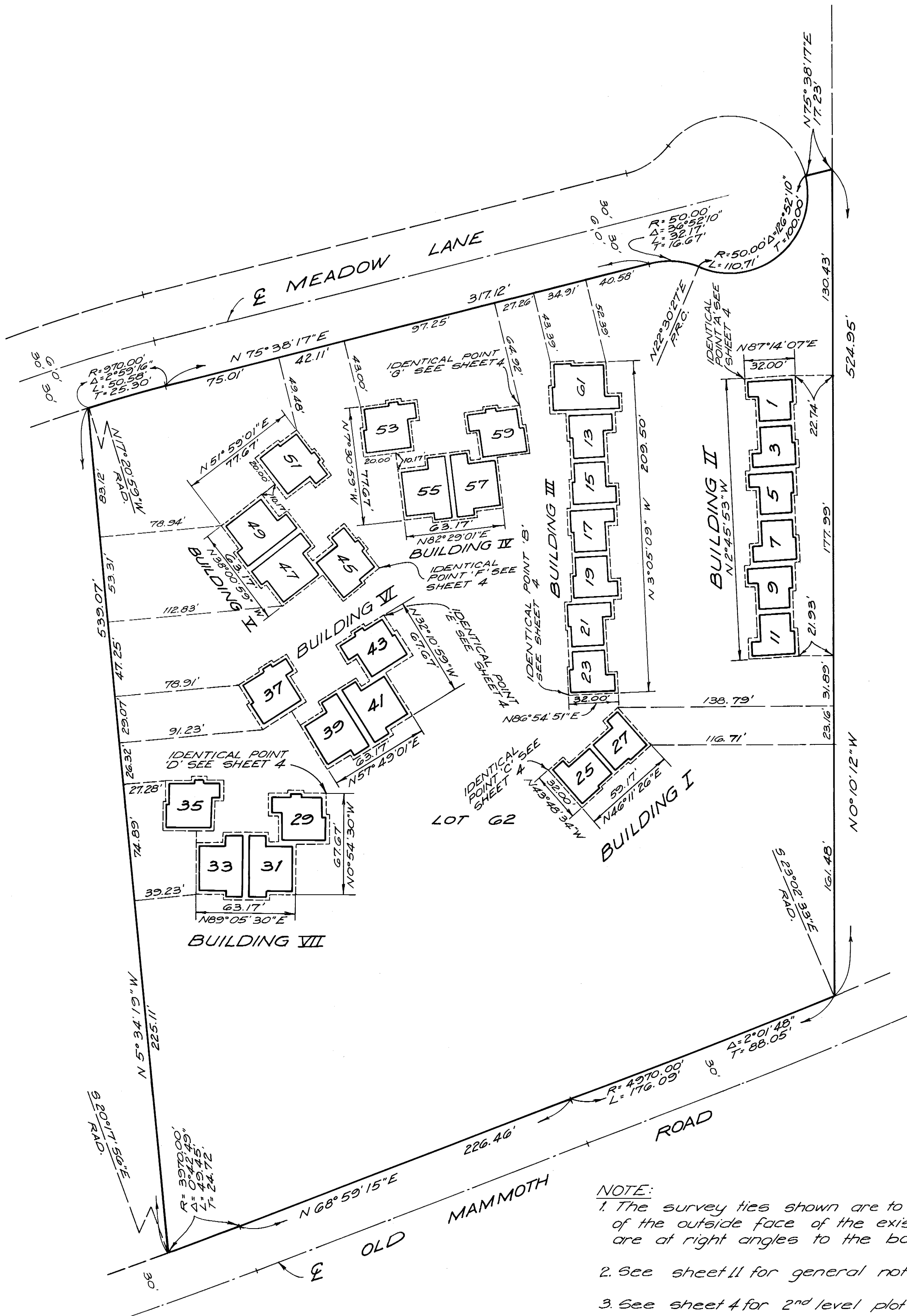
5.373 ACRES

GERALD F. OLDENBURG, L.S. 3246

WILLIAMSON & SCHMID, CIVIL ENGINEERS

FOR CONDOMINIUM PURPOSES

1 LOT AND 61 CONDOMINIUM UNITS



FIRST LEVEL PLOT PLAN

Subd. Maps - Vol. 8, Pg. 38-B