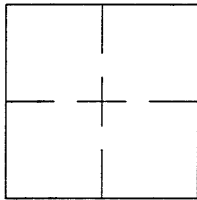


CORNER RECORD

Document Number CR 703 ^{96-53 4 Cr 53}City of SAN LORENZO County of ALAMEDA, California
Brief Legal Description STREET MONUMENT. PIN IN CONC. POST. VIA DEL REY.

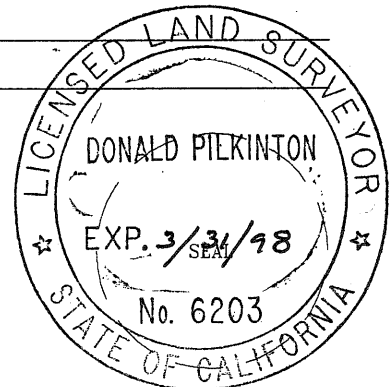
CORNER TYPE

Government Corner ☐ Control ☐
Meander ☐ Property ☐
Rancho ☐ Other ☒
Date of Survey JULY 7, 1993

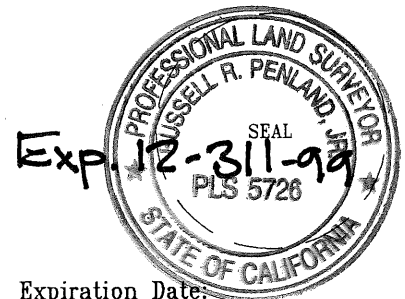
COORDINATES (Optional)

N. _____
E. _____
Zone _____ Datum _____
Elev. _____Corner - Left as found ☒ Found and tagged ☐ Established ☐ Reestablished ☐ Rebuilt ☐Identification and type of corner found: Evidence used to identify or procedure used to establish or reestablish the corner:
THE MONUMENT DESCRIBED BELOW WAS REFERENCED BY A LINE. THE LINE WAS
ESTABLISHED BY CHISELED CROSSES NEAR THE BACK OF THE CONCRETE SIDEWALKS.A description of the physical condition of the monument as found and as set or reset: A PIN IN CONCRETE POST
WAS FOUND IN GOOD CONDITION AT THE ANGLE POINT MONUMENT ON THE CENTER-
LINE OF VIA DEL REY. THE MONUMENT IS IN A MONUMENT WELL BUT IS IN DANGER
OF BEING DESTROYED DUE TO STREET CONSTRUCTION.

SURVEYOR'S STATEMENT

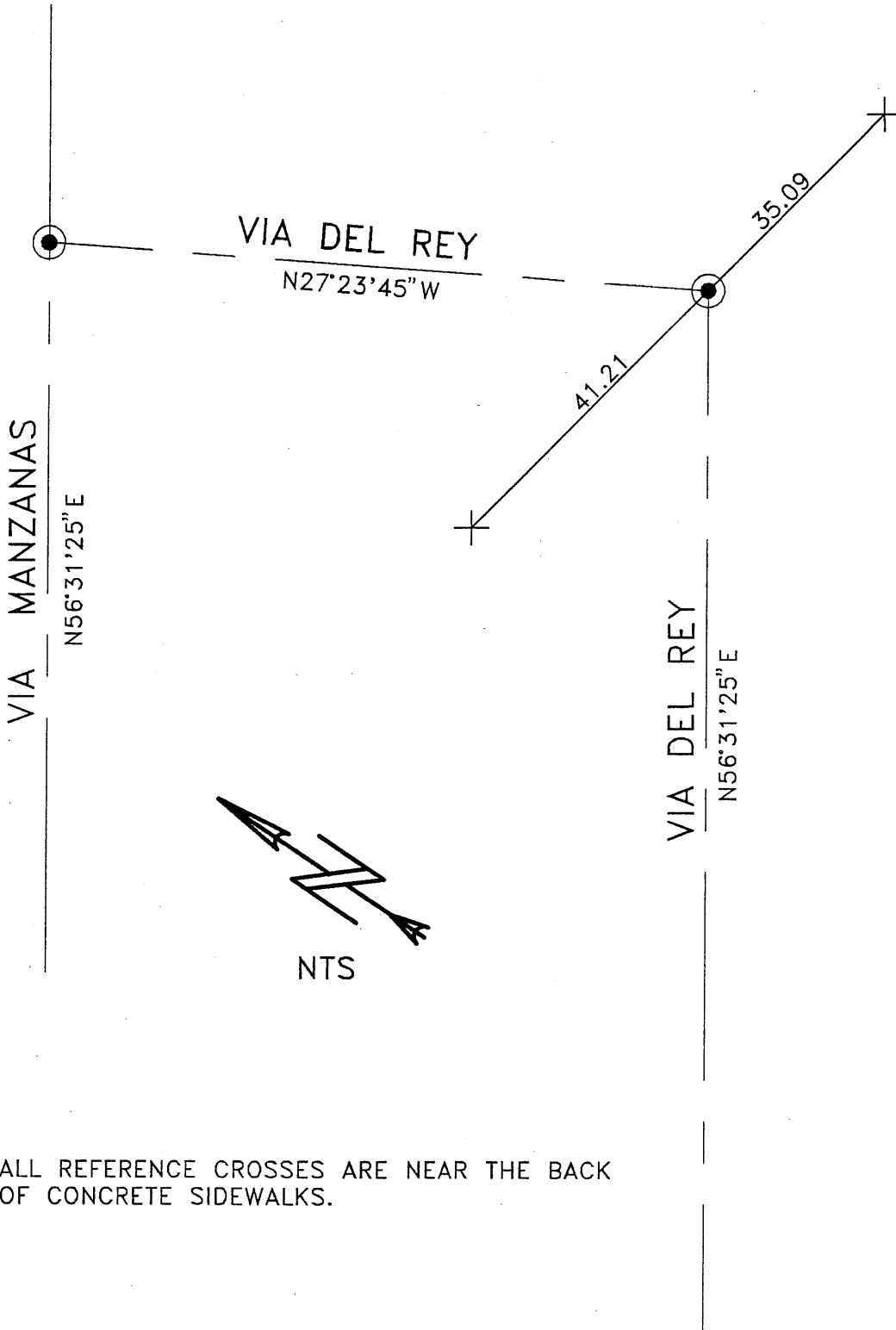
This Corner Record was prepared by me or under my direction in conformance with
the Land Surveyors' Act on JANUARY 4, 19 96.Signed Donald C. Piterinton L.S. or R.C.E. Number 45.6203

COUNTY SURVEYOR'S STATEMENT

This Corner Record was received 1-8- 19 96 and examinedand filed 3-18- 19 96Signed Russell R. Penland Title Deputy County Surveyor

Expiration Date: _____

County Surveyor's Comment _____



ALL REFERENCE CROSSES ARE NEAR THE BACK
OF CONCRETE SIDEWALKS.

REFERENCES: TRACT NO. 1082, BK.31-PG.46.
FIELD NOTES LL-3072-2.