

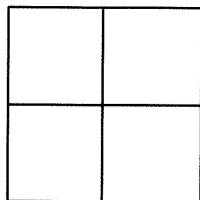
# CORNER RECORD

Agency Index

BK 115 PG 8

Document Number

CR 11832

City of FREMONTCounty of ALAMEDA, CaliforniaBrief Legal Description WELL MONUMENT LOCATED WITHIN CURTIS ST  
IN FRONT OF 5226 CURTIS ST

## CORNER TYPE

Government Corner	<input type="checkbox"/>	Control	<input checked="" type="checkbox"/>
Meander	<input type="checkbox"/>	Property	<input type="checkbox"/>
Rancho	<input type="checkbox"/>	Other	<input type="checkbox"/>

Date of Survey 7/6/18

## COORDINATES (Optional)

N. 2015606.4± E. 6132244.1±

Elevation \_\_\_\_\_

Units Metric ☐ U.S. Survey Foot ☒

Horizontal Datum \_\_\_\_\_

Zone \_\_\_\_\_ Epoch Date \_\_\_\_\_

Vertical Datum \_\_\_\_\_

☐ Complies with Public Resources Code §§8801-8819☐ Complies with Public Resources Code §§8890-8902PLS Act Ref: ☐ 8765(d)☒ 8771☐ 8773☐ Other:Corner/  
Monument: ☒ Left as found☐ Established☐ Rebuilt☒ Pre-Construction☐ Found and tagged☐ Reestablished☒ Referenced☐ Post-Construction

Narrative of corner identified and monument as found, set, reset, replaced, or removed:

☐ See sheet #2 for description(s) :

FOUND BRASS DISC AND PUNCH IN MONUMENT WELL "CITY MONUMENT FREMONT, CALIF"

FOUND AND SET POINTS AS SHOWN ON PAGE 2.

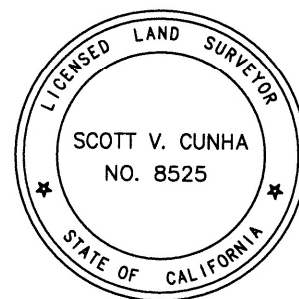
THIS POINT WAS REFERENCED PRIOR TO A CONSTRUCTION PROJECT IN THE VICINITY.

THE TIES SHOWN HEREON ARE FOR THE PURPOSE OF PERPETUATING FOUND MONUMENTATION.

NO CLAIM IS MADE AS TO THE RELATIONSHIP OF THE POINTS OR LINES SHOWN HEREON TO TRUE BOUNDARY LOCATION.

## SURVEYOR'S STATEMENT

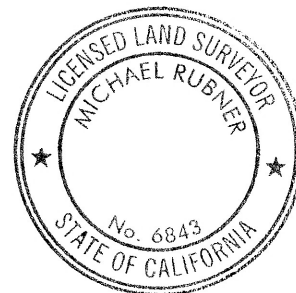
This Corner Record was prepared by me or under my direction in conformance with

the Professional Land Surveyors' Act on JULY 10, 2018.Signed Scott V. Cunha P.L.S. or R.C.E. No. LS 8525  
SCOTT V. CUNHA

## COUNTY SURVEYOR'S STATEMENT

This Corner Record was received 13 JULY 2018and examined and filed 1 OCTOBER 2018.Signed Michael Rubner P.L.S. or R.C.E. No. 6843Title COUNTY SURVEYOR

County Surveyor's Comment



SCALE: 1"=30'

## LEGEND

- FOUND BRASS DISC WITH PUNCH IN MONUMENT WELL
- ⊗ SET CUT CROSS IN WALK
- AA##A# ALAMEDA COUNTY MONUMENT ID
- 19592 REFERENCE STREET ADDRESS

PARK

CURTIS ST

