

RECORD OF SURVEY NO. 36-74

BEING A SURVEY OF A LOT LINE ADJUSTMENT BETWEEN LOT 5 AND LOT 6 OF TIMBER RIDGE ESTATES SUBDIVISION ADDITION NO.1 AS PER MAP BOOK 2 AT PAGE 4, AND BEING A PORTION OF THE NORTH HALF OF THE SOUTHEAST 1/4 OF SECTION 33, TOWNSHIP 3 SOUTH, RANGE 27 EAST, M.D.B. & M., IN THE TOWN OF MAMMOTH LAKES, COUNTY OF MONO, STATE OF CALIFORNIA.

SURVEYOR'S STATEMENT:

THIS MAP CORRECTLY REPRESENTS A SURVEY MADE BY ME OR UNDER MY DIRECTION IN CONFORMANCE WITH THE REQUIREMENTS OF THE LAND SURVEYOR'S ACT AT THE REQUEST OF BUD HARTMAN IN JULY, 1989

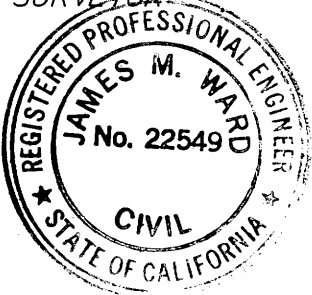
DAVID LAVERTY L.S. NO. 4587
LIC. EXP. 9-30-90

COUNTY SURVEYOR'S STATEMENT

THIS MAP HAS BEEN EXAMINED IN ACCORDANCE WITH SECTION 8766 OF THE LAND SURVEYOR'S ACT THIS 10TH DAY OF OCTOBER, 1990.

JAMES WARD
COUNTY SURVEYOR

BY: *James M. Ward*
COUNTY SURVEYOR R.C.E. 22549
LIC. EXP. 12-31-93



RECORDER'S CERTIFICATE:

FILED THIS 21st DAY OF April, 1992, AT 11:27 A.M. IN BOOK 2 RECORD OF SURVEYS AT PAGE 122 AT THE REQUEST OF BUD HARTMAN.

INSTRUMENT NO.: #2351
FEE: \$5.00

RENN NOLAN
MONO COUNTY RECORDER

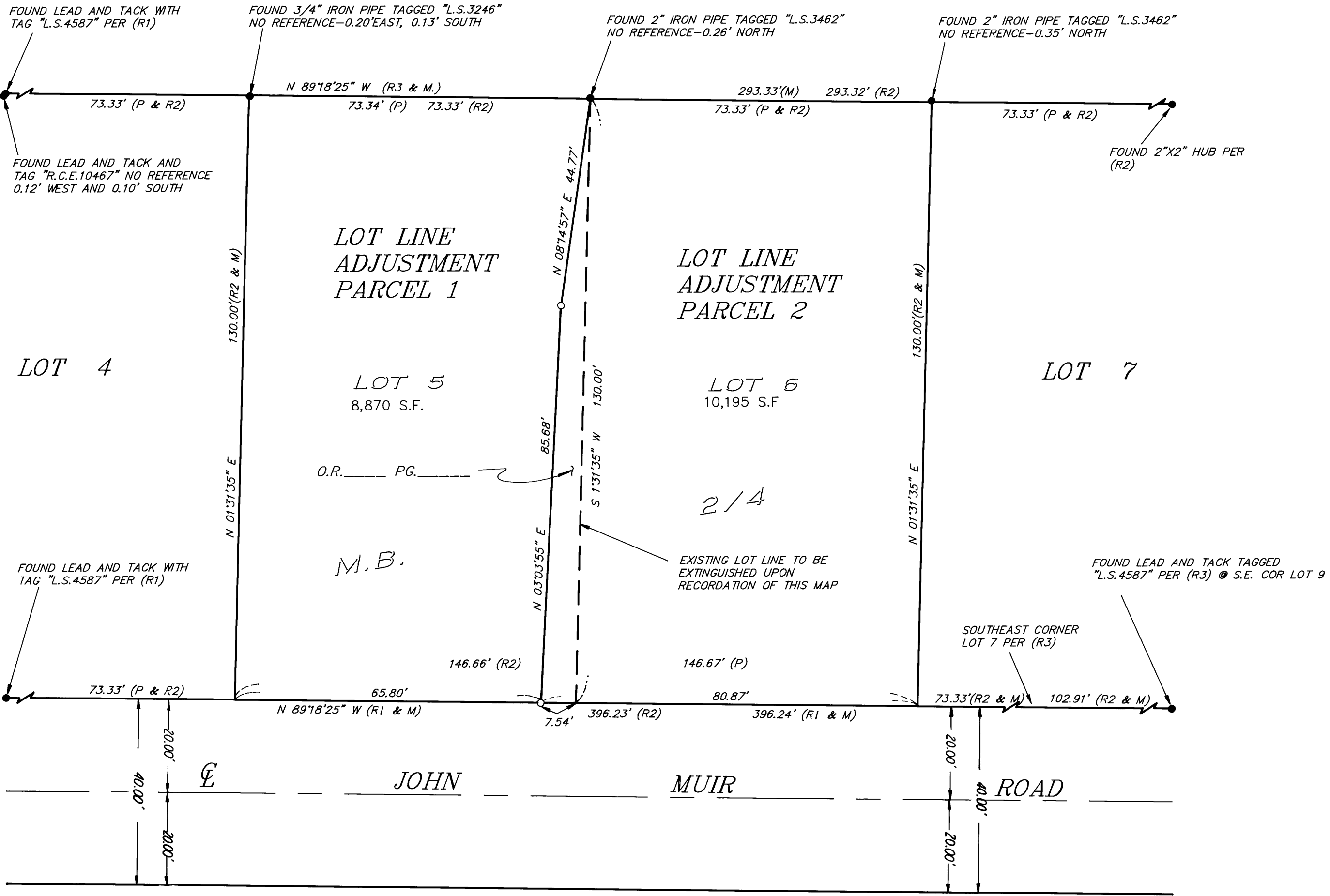
BY: *Lera M. Miller*
DEPUTY COUNTY RECORDER

BASIS OF BEARINGS:

THE BASIS OF BEARINGS USED FOR THIS MAP IS N 89°18'25" W FOR JOHN MUIR ROAD AS SHOWN ON CORNER RECORD NO. 3S27-33-14.

LEGEND:

- o = SET 5/8" REBAR AND CAP "L.S.4587" UNLESS OTHERWISE NOTED.
- = FOUND MONUMENT AS NOTED.
- R1 = RECORD INFORMATION PER CORNER RECORD 3S27-33-14 FILED IN THE MONO COUNTY SURVEYOR'S OFFICE.
- R2 = RECORD INFORMATION PER M.B. 2/4
- R3 = RECORD INFORMATION PER CORNER RECORD 3S27-33-13 FILED IN THE MONO COUNTY SURVEYOR'S OFFICE.
- P = PROPORTIONED MEASUREMENT FROM RECORD INFORMATION



M.B. 2 / 22