

GENERAL NOTES

TRUE WARM & WELCOME



TRUE WARM & WELCOME

BID ISSUE

NOT TO SCALE | F-001

NOT TO SCALE | F-001

TRUE WARM & WELCOME

BID ISSUE

- VERIFY QUANTITIES AND REQUIREMENTS OF ALL HVAC & KITCHEN EQUIPMENT PRIOR TO ROUGH IN.
- ALL TELEPHONE/DATA/TV CABLES AND WIRES, AND TERMINATIONS OF ALL REQUIRED CABLE AND JACKS WILL BE INSTALLED BY THIRD PARTY.
- POWER SUPPLY FOR COMPUTER AND CASH REGISTER (86A & 94) SHALL BE ON THE SAME CIRCUIT BREAKER, W/ ISOLATED GROUND & ORANGE RECEPTACLE.
- ALL CIRCUITRY SHOWN WITHOUT TICKS SHALL HAVE (2) WIRES PLUS EQUIPMENT GROUNDING CONDUCTOR.
- WHEN WORKING IN JURISDICTIONS WHICH HAVE ADOPTED THE 2008 NEC OR LATER, ALL MULTI-WIRE BRANCH CIRCUITS SHALL HAVE SEPARATE NEUTRALS TO MEET THE REQUIREMENTS OF 2008 NEC 210.4(B).
- TRANSFORMERS SHALL BE MOUNTED ABOVE CEILING BELOW TRUSSES WITH LOW VOLTAGE WIRING FEEDING TO ALL EXTERIOR LIGHTS.
- ~~FOR CANOPY LIGHTING, REFER TO SHEET E-101.~~

POWER PLAN GENERAL NOTES 2

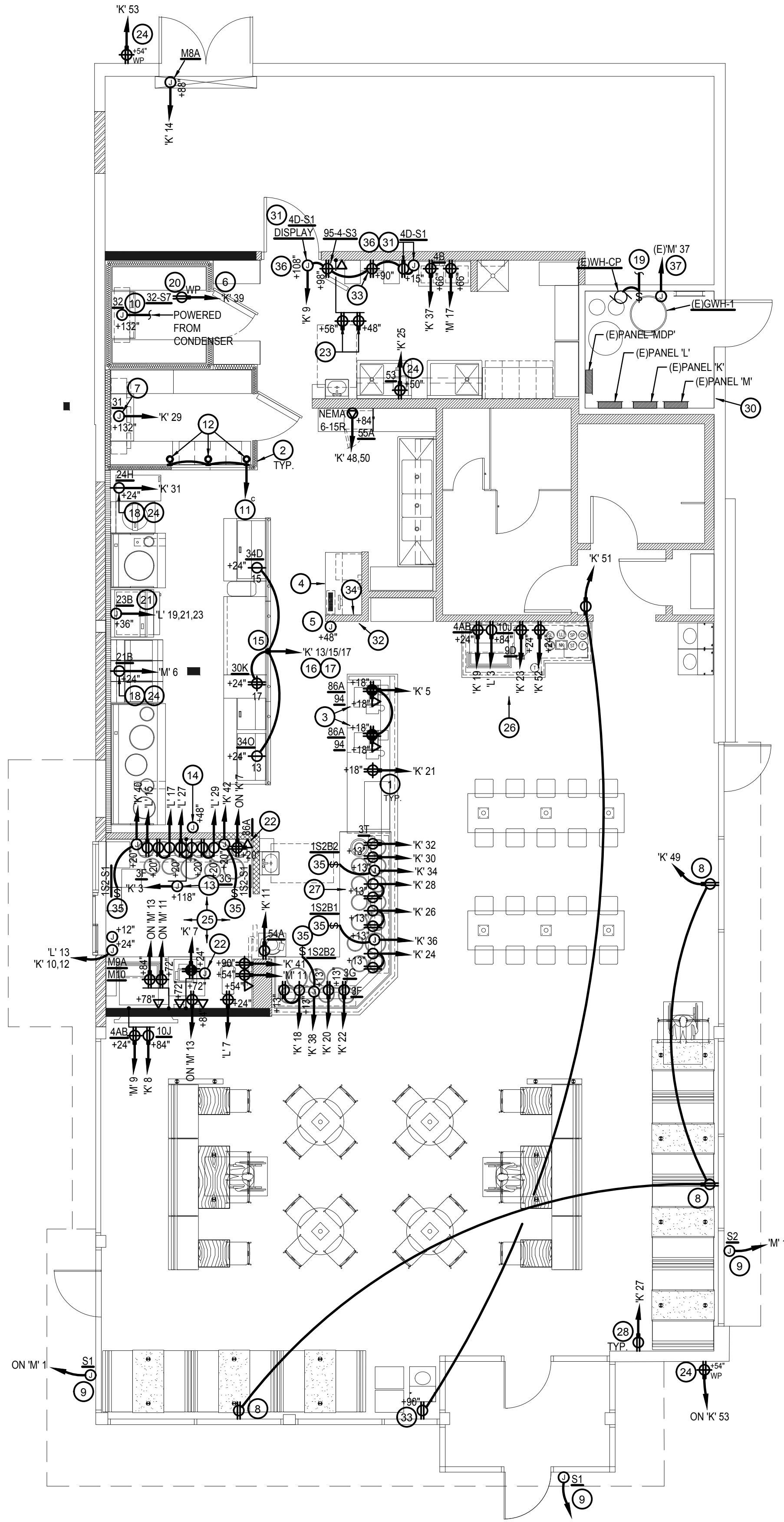
NOT TO SCALE E-100

1. ALL CIRCUITRY/CONDUIT FOR FRONT LINE EQUIPMENT TO BE ROUTED IN CASEWORK TO J-BOX IN WALL AND CONCEALED IN WALL.
2. PROVIDE SEALS AND EXPANSION COUPLINGS ON ALL CONDUITS ENTERING OR LEAVING AREA OF TEMPERATURE DIFFERENCE. REFER TO DETAIL 6/E-400 FOR ADDITIONAL INFORMATION.
3. PROVIDE (2) 1-1/2" CONDUITS WITH PULL STRINGS FROM CASH REGISTER TO MANAGER STATION. SEE P.O.S. AND SERVICE LINE ELEVATIONS, 3/E-200.
4. SEE 'MANAGER STATION ELEVATION' 1/E-200 FOR ADDITIONAL OUTLETS AND J-BOXES.
5. ANSUL PULL STATION. REFER TO DETAIL, 2/E-400.
6. REFER TO 'LTG AND DOOR HEATER' WIRING DIAGRAM, 10/E-400.
7. REFER TO 'COOLER EVAPORATOR COIL' WIRING DIAGRAM, 8/E-400.
8. SHOW WINDOW RECEPTACLE SHALL BE CONTROLLED VIA SWITCH "b". REFER TO 4/E101. RECEPTACLE SHALL BE MOUNTED IN WALL AS CLOSE TO TOP OF STRUCTURAL HEADER AS POSSIBLE.
9. W.P. J-BOX FOR SIGNAGE. COORDINATE LOCATION WITH ARCHITECT / OWNER / SIGN PACKAGE. SIGN DISCONNECT PROVIDED BY SIGN CONTRACTOR.
10. REFER TO 'FREEZER EVAPORATOR COIL' WIRING DIAGRAM, SHEET 9/E-400. THE FAN COIL UNIT IS POWERED FROM THE CONDENSER UNIT VIA DISCONNECT CONNECTION. HEAT TAPE PROVIDED AND INSTALLED BY ELECTRICIAN.
11. ROUTE HOMERUN THROUGH LIGHTING SWITCHBANK 'A' (SWITCH AS NOTED IN LOWER CASE). REFER TO 4/E-101 FOR MORE INFORMATION.
12. CONNECT TO VEGETABLE DISPLAY LIGHTING PROVIDED WITH WALK-IN COOLER.
13. HOOD CONTROL PANEL/ANSUL SYSTEM CABINET. MOUNT CABINET DIRECTLY BELOW T-BAR CEILING.
14. PROVIDE 2-GANG J-BOX @ 48" AFF FOR HOOD CONTROL SWITCHES. REFER TO M-400 AND M-401.
15. 1" CONDUIT STUB UP LOCATION IN STAINLESS STEEL POWER PANEL FOR ISLAND KITCHEN EQUIPMENT CONNECTION. REFER TO DETAIL 2/A-109. COORDINATE LOCATION WITH ARCHITECT / OWNER.
16. ROUTE CABLING / CIRCUITRY THROUGH 1" CONDUIT IN SLAB (KEYED NOTE #15).
17. UTILIZE SEAL TIGHT CONDUIT FOR ALL WIRING INCLUDED ALONG LOW WALL PANEL.
18. ALL DEVICES UNDER HOOD TO BE PROVIDED AND INSTALLED WITH SHUNT TRIP CIRCUIT BREAKER AND WATERPROOFING BOX (RED DOT #CKSUV). REFER TO COOKLINE ELECTRICAL ELEVATIONS, 6/E-200.
19. RECIRCUIT EXISTING WATER HEATER CIRCULATION PUMP (WH-CP) TO BACK-OF-HOUSE LIGHTING CIRCUITRY/CONTROL.
20. PROVIDE WEATHERPROOF RECEPTACLE FOR HEAT TAPE. COORDINATE FINAL LOCATION WITH REFRIGERATION INSTALLER.
21. ELECTRIC GRILL '23B': FEED WITH 3 #8, #10 GROUND, 1" CONDUIT. REFER TO 4/E-200.
22. SEE DRIVE THRU ELEVATION 2/E-200 FOR CONDUIT SIZES AND CONFIGURATIONS.
23. FURNISH AND INSTALL (2) HUBBELL GFSTBF20 FACELESS GFCI (OR EQUIVALENT) (1) FOR EACH CIRCUIT FEEDING EQUIPMENT BENEATH THE KITCHEN HOOD WHICH UTILIZES SIMPLEX 120V RECEPTACLES. INSTALL IN AN ACCESSIBLE LOCATION IN THIS GENERAL AREA, OR AS DIRECTED BY THE OWNER, ARCHITECT OR ENGINEER. PROVIDE ADDITIONAL OUTLETS AS REQUIRED TO FEED ALL SUCH LOADS BENEATH HOOD. FASTEN A PLASTIC LABEL STATING CIRCUIT AND EQUIPMENT SERVED FOR EACH OUTLET.
24. PROVIDE WP, COVER, IN-USE RED DOT (#CKSUV).
25. SEE FOR DRIVE-THRU ELEVATIONS, 2/E-200.
26. SEE DRINK STATION ELEVATIONS, 5/E-200.
27. SEE 3/E-200 FOR SERVICE LINE ELEVATIONS.
28. SEE RECEPT. DIAGRAM 3/E-400.
29. ~~SEE DINING ROOM MONITOR ELEVATION, SHEET 8/E-200.~~
30. EXISTING IRRIGATION CONTROLLER LOCATED IN UTILITY ROOM (VERIFY EXACT LOCATION IN FIELD) TO BE REUSED. RECIRCUIT TO A-53.
31. REFER TO SHEET 9/E-200 FOR INSTALLATION OF CO2 MONITOR.
32. SEE SWITCH BANK ELEVATION, SHEET 7/E-200.
33. FLY LIGHT RECEPTACLE SHALL BE INSTALLED WITH A RECESSED CLOCK OUTLET. TYP OF LOCATIONS.
34. SEE SECURITY KEY PAD ELEVATION 1/E-200.
35. CONNECT HEAT LAMPS TO COUNTER-MOUNTED SWITCH PROVIDED AND INSTALLED BY CONTRACTOR. COORDINATE EXACT LOCATION WITH KITCHEN EQUIPMENT PROVIDER.
36. E.C. TO PROVIDE CO2 MONITOR, MOUNT OVER J-BOX WITH WIRING THROUGH WALL CONDUIT FOR CLEAN INSTALLATION. PROVIDE ALL OTHER REQUIRED CONNECTIONS AND COMPONENTS FOR FULLY WORKING SYSTEM.
37. EXISTING GAS WATER HEATER (GWH-1) AND CIRCUIT TO REMAIN AS-IS.

POWER PLAN KEYED NOTES 3

NOT TO SCALE E-100

ALL SINGLE PHASE RECEPTACLES RATED 150V OR LESS, 50A OR LESS, AND ALL THREE-PHASE RECEPTACLES RATED 150V TO GROUND OR LESS, 100A OR LESS INSTALLED IN BATHROOMS, KITCHENS, FOOD PREP AREAS, ON ROOFTOPS, OUTDOORS, LOCKER ROOMS, INDOOR WET LOCATIONS, GARAGES, SERVICE BAYS, CRAWLSPACES, UNFINISHED PORTIONS OF BASEMENTS, AND WITHIN 6' FROM TOP INSIDE EDGE OF SINKS, SHALL HAVE GROUND-FAULT CIRCUIT-INTERRUPTER PROTECTION, PER NEC 210.8(B). GFCI PROTECTION SHALL BE BY EITHER RATED BREAKERS OR DEVICES. GFCI PROTECTION SHALL BE IN AN ACCESSIBLE LOCATION, NOT BEHIND EQUIPMENT.



POWER FLOOR PLAN 1

Scale: 3/16"=1'-0" E-100



PANDA EXPRESS, INC.
1683 Walnut Grove Ave.
Rosemead, California
91770
Telephone: 626.799.9898
Facsimile: 626.372.8288

All ideas, designs, arrangement and plans indicated or represented by this drawing are the property of Panda Express Inc. and were created for use on this specific project. None of these ideas, designs, arrangements or plans may be used by or disclosed to any person, firm, or corporation without the written permission of Panda Express Inc.

REVISIONS:

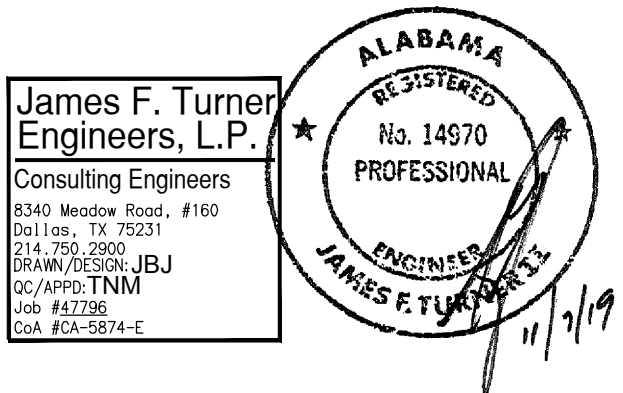
ISSUE DATE:

1st	DEVELOPER REVIEW	07.15.19
2nd	SITE PLAN SUBMITTAL	08.26.19
3rd	SITE COMMENTS	09.05.19
4th	ISSUE FOR PERMIT	10.01.19
5th	ISSUE FOR BID	11.07.19

DRAWN BY: PM / KL / EA

PANDA PROJECT #: S8-20-D7163

ARCH PROJECT #: 19027



Heights Venture
ARCHITECTURE + DESIGN

HOUSTON 1111 North Loop West, Suite 800 Houston, Texas 77008 713.869.1103 V
DALLAS 5741 Legacy Drive, Suite 320 Plano, Texas 75024 972.490.7262 V

PANDA EXPRESS

2096 INTERSTATE DR.
OPELIKA, AL, 36801
3600 FSDT
TWW REMODEL

E-100

POWER FLOOR PLAN

Scale: 3/16"=1'-0" E-100

TRUE WARM & WELCOME

BID ISSUE

- UNLESS NOTED OTHERWISE ON PLANS, ALL EXISTING LIGHTING TO BE REMOVED AND CIRCUITS DEMOLISHED BACK TO ASSOCIATED PANELS.
- CONTRACTOR SHALL PROVIDE ALL REQUIRED HARDWARES, BRACKETS, ETC. FOR A COMPLETE LIGHTING FIXTURE INSTALLATION.
- ALL LIGHTING FIXTURES SHALL BE SUPPORTED PER N.E.C. 410-16(C). SEE DETAIL, 4/E-400.
- CONTRACTOR SHALL INSTALL ALL LIGHTING FIXTURES INCLUDING OWNER-FURNISHED FIXTURES.
- ALL FIXTURE BALLASTS SHALL BE U.L. LISTED.
- ~~E.C. SHALL INSTALL OWNER-SUPPLIED LED STRIP LIGHTING & CUT TO PROPER LENGTH & COORDINATE WITH OWNER FOR EXACT LENGTHS AND FINAL LOCATIONS.~~
- WHEN WORKING IN JURISDICTIONS WHICH HAVE ADOPTED THE 2008 NEC OR LATER, ALL MULTI-WIRE BRANCH CIRCUITS TO HAVE SEPARATE NEUTRALS TO MEET THE REQUIREMENTS OF 2008 NEC 210.4(B).
- ALL FLUORESCENT FIXTURES SHALL HAVE INTEGRAL DISCONNECTING MEANS PER 2005 NEC 410.73(G) and 2008 NEC 410.130(G)(1).
- ALL CIRCUITRY SHOWN WITHOUT TICKS SHALL HAVE (2) WIRES PLUS EQUIPMENT GROUNDING CONDUCTOR.
- 'N.L.' DESIGNATION INDICATES NIGHT LIGHT ON UNSWITCHED CIRCUIT.
- ALL EXIT SIGNS (TYPE 'L4HO') AND EXTERIOR EMERGENCY EGRESS FIXTURES (TYPE 'L86') ARE TO BE CIRCUITED AHEAD OF ANY SWITCHING OR AUTOMATIC CONTROLS.

LIGHTING GENERAL NOTES 2

NOT TO SCALE E-101

- SWITCHBANK 'A'. REFER TO SCHEDULE 4/E-101.
- ROUTE HOMERUN THROUGH LIGHTING SWITCHBANK 'A' (SWITCHES AS NOTED IN LOWER CASE). REFER TO SCHEDULE 4/E-101 FOR MORE INFORMATION.
- ROUTE THROUGH CONTACTS IN HOOD CONTROL PANEL 'M4' FOR CIRCUIT POWER. REFER TO 3/E-401.
- PROVIDE SEPARATE UNSWITCHED HOT CONDUCTOR (SAME CIRCUIT, NOT CONTROLLED BY SWITCH IN SWITCHBANK) TO LOCALLY SWITCHED FIXTURES AND EMERGENCY FIXTURE BATTERY TRIGGER LEADS.
- ~~DUPLEX RECEPTACLE FOR LED ROPE. INSTALL ABOVE CEILING AT +120". REFER TO A-402 FOR MORE INFORMATION.~~
- WALK-IN COOLER LIGHT FIXTURES AND PILOT LIGHT SWITCH PROVIDED WITH COOLER INSTALLED BY E.C. REFER TO 'COOLER EVAPORATOR COIL' WIRING DIAGRAM, 8/E-400.
- WALK-IN FREEZER LIGHT FIXTURE AND PILOT LIGHT SWITCH PROVIDED WITH FREEZER INSTALLED BY E.C. REFER TO 'FREEZER LTG AND DOOR HEATER WIRING DIAGRAM', 10/E-400.
- REFER TO 'EXHAUST FAN CONTROL DIAGRAM', 5 / E-400, FOR MORE INFORMATION.
- FIXTURES IN THIS ROOM SHALL BE LOCALLY SWITCHED.
- LIGHTING INVERTER FOR EMERGENCY LIGHTING TO BE MOUNTED NEXT TO CEILING. RE: 9/E-200.
- ~~LED TRANSFORMER FOR LED ROPE LIGHTING LOCATION. MOUNT ABOVE CEILING.~~
- ~~DUPLEX RECEPTACLE FOR LED ROPE. INSTALL BEHIND CABINET AT +90". REFER TO A-402 FOR MORE INFORMATION.~~
- DO NOT CIRCUIT LIGHTS IN THIS ROOM THROUGH AUTOMATIC CONTROL PER NEC 110.26(D).
- CIRCUIT LIGHTS IN THIS ROOM THROUGH CEILING MOUNTED OCCUPANCY SENSORS FOR AUTOMATIC CONTROL OF LIGHTS. PROVIDE WALL SWITCHES AS INDICATED FOR MANUAL CONTROL.

LIGHTING KEYED NOTES 3

NOT TO SCALE E-101

NOTE:
FIXTURES TO BE ROUTED VIA TIME TIMECLOCKS ARE SHOWN ON
DETAIL 11/E-400.

NOTE:
CONTRACTOR TO INSTALL (2) 5 GANG SWITCH BOXES AS SHOWN
BELOW. DO NOT INSTALL SEPARATE/INDIVIDUAL BOXES FOR EACH
SWITCH

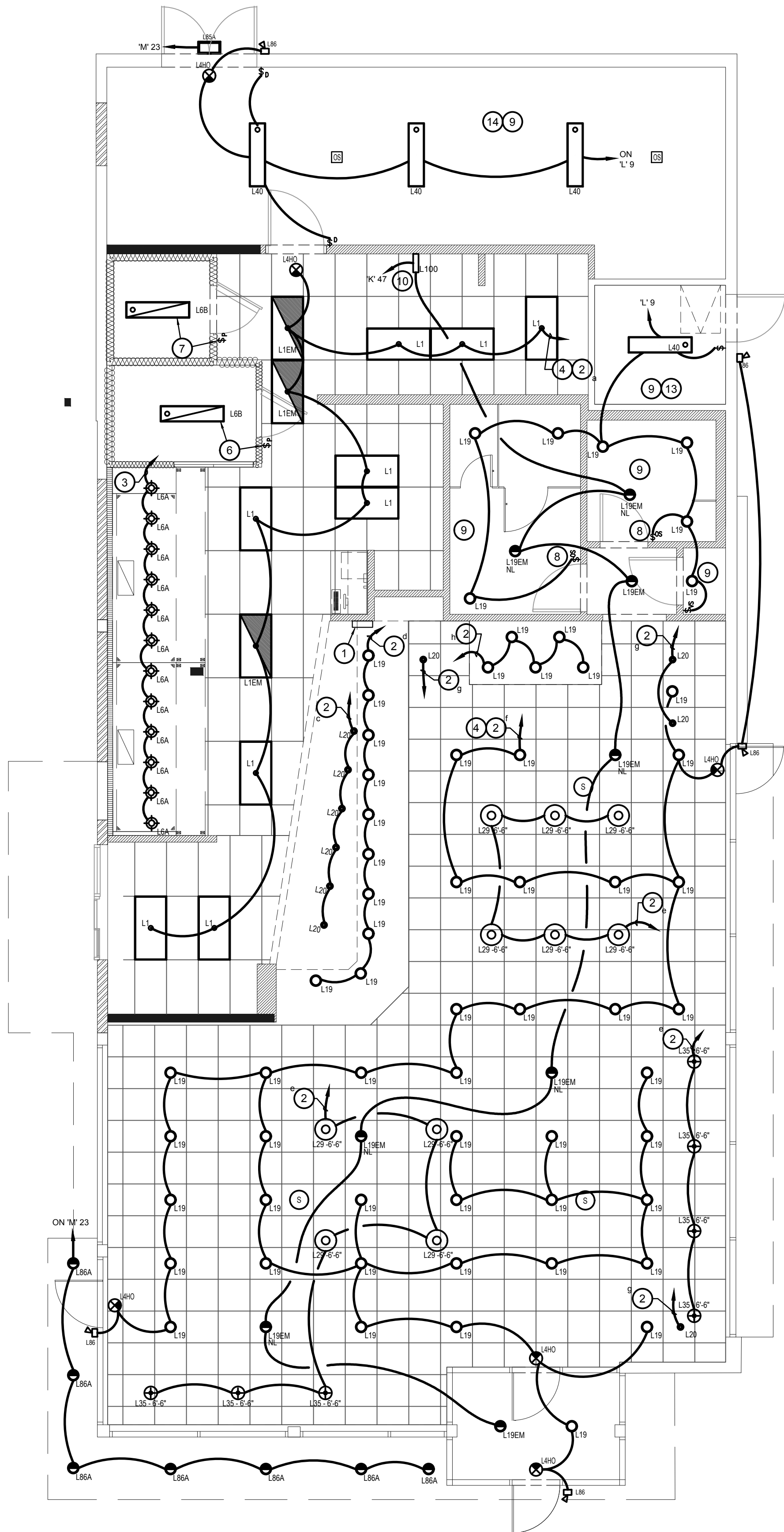
(a)	(b)	(c)	(d)	(e)
\$	\$	\$ _D	\$ _D	\$ _D
BACK OF HOUSE LTG & EX. FAN & RECIRC PUMP	SHOW WINDOW RECEPS	WALK-IN, MENU LED ACCENTS	SERVING LINE SOFFIT	DINING PENDANTS
(f)	(g)	(h)	(i)	60:00
\$ _D	\$ _D	\$ _D	\$ _D	
INTERIOR DINING	DECORATIVE LIGHTING	BEVERAGE COUNTER	SPARE	INTERIOR LIGHTING SHUT DOWN OVERRIDE

SWITCHBANK SCHEDULE 'A'

TAG	SWITCH TYPE	AREA SERVED / SWITCH LABEL	CIRCUIT	LOAD
a	TOGGLE SWITCH	BACK-OF-HOUSE / RR FANS	'K' 45	1545 VA
b	TOGGLE SWITCH	SHOW WINDOW RECEP	'K' 49	540 VA
c	DIMMING SWITCH	WALK-INS, MENU	'K' 1	136 VA
d	DIMMING SWITCH	SERVING LINE SOFFIT	'K' 45	140 VA
e	DIMMING SWITCH	DINING PENDANTS	'K' 47	123 VA
f	DIMMING SWITCH	INTERIOR DINING	'K' 47	595 VA
g	DIMMING SWITCH	DECORATIVE LIGHTING	'K' 47	24 VA
h	DIMMING SWITCH	BEVERAGE COUNTER	'K' 47	70 VA
i	SPARE			
j	OVERRIDE			

LIGHTING SWITCHBANK SCHEDULE 4

NOT TO SCALE E-101



LIGHTING FLOOR PLAN 1

Scale: 3/16"=1'-0" E-101



PANDA EXPRESS, INC.
1683 Walnut Grove Ave.
Rosemead, California
91770

Telephone: 626.799.9898
Facsimile: 626.372.8288

All ideas, designs, arrangement and plans indicated or represented by this drawing are the property of Panda Express Inc. and were created for use on this specific project. None of these ideas, designs, arrangements or plans may be used by or disclosed to any person, firm, or corporation without the written permission of Panda Express Inc.

REVISIONS:

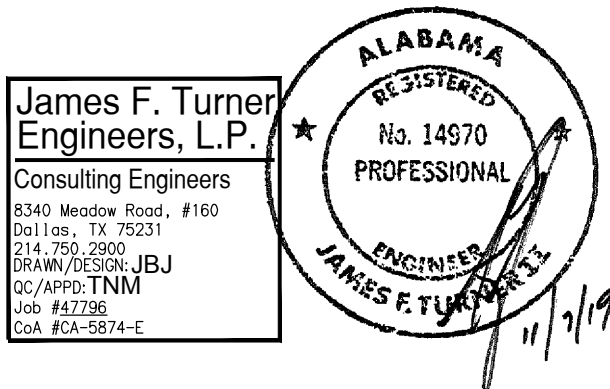
ISSUE DATE:

1st	DEVELOPER REVIEW	07.15.19
2nd	SITE PLAN SUBMITTAL	08.26.19
3rd	SITE COMMENTS	09.05.19
4th	ISSUE FOR PERMIT	10.01.19
5th	ISSUE FOR BID	11.07.19

DRAWN BY: PM / KL / EA

PANDA PROJECT #: S8-20-D7163

ARCH PROJECT #: 19027



Heights Venture ARCHITECTURE + DESIGN

HOUSTON 1111 North Loop West, Suite 800 Houston, Texas 77008 713.866.1103 V
DALLAS 5741 Legacy Drive, Suite 320 Plano, Texas 75024 972.490.7262 V

PANDA EXPRESS

2096 INTERSTATE DR.
OPELIKA, AL, 36801
3600 FSDT

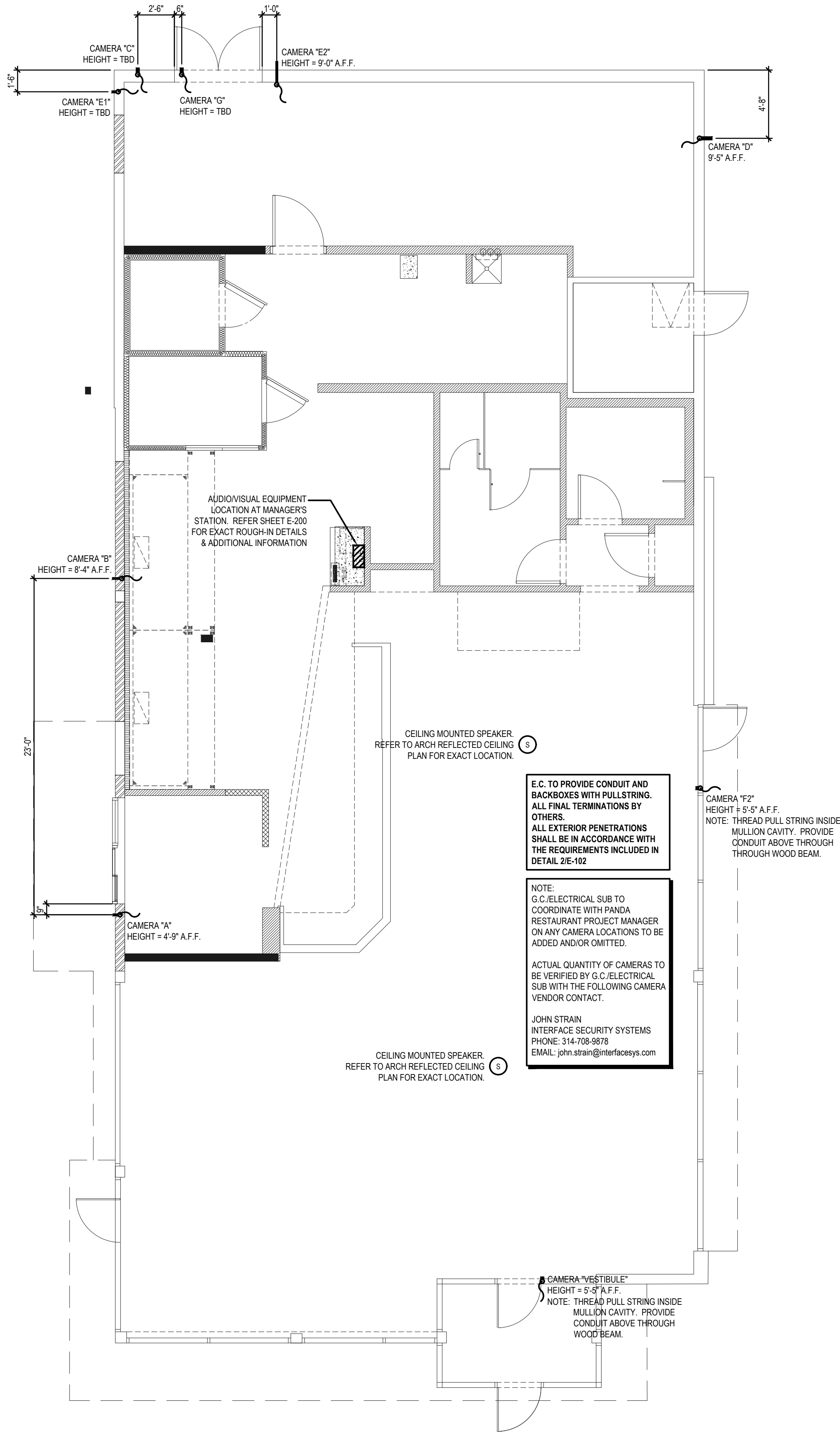
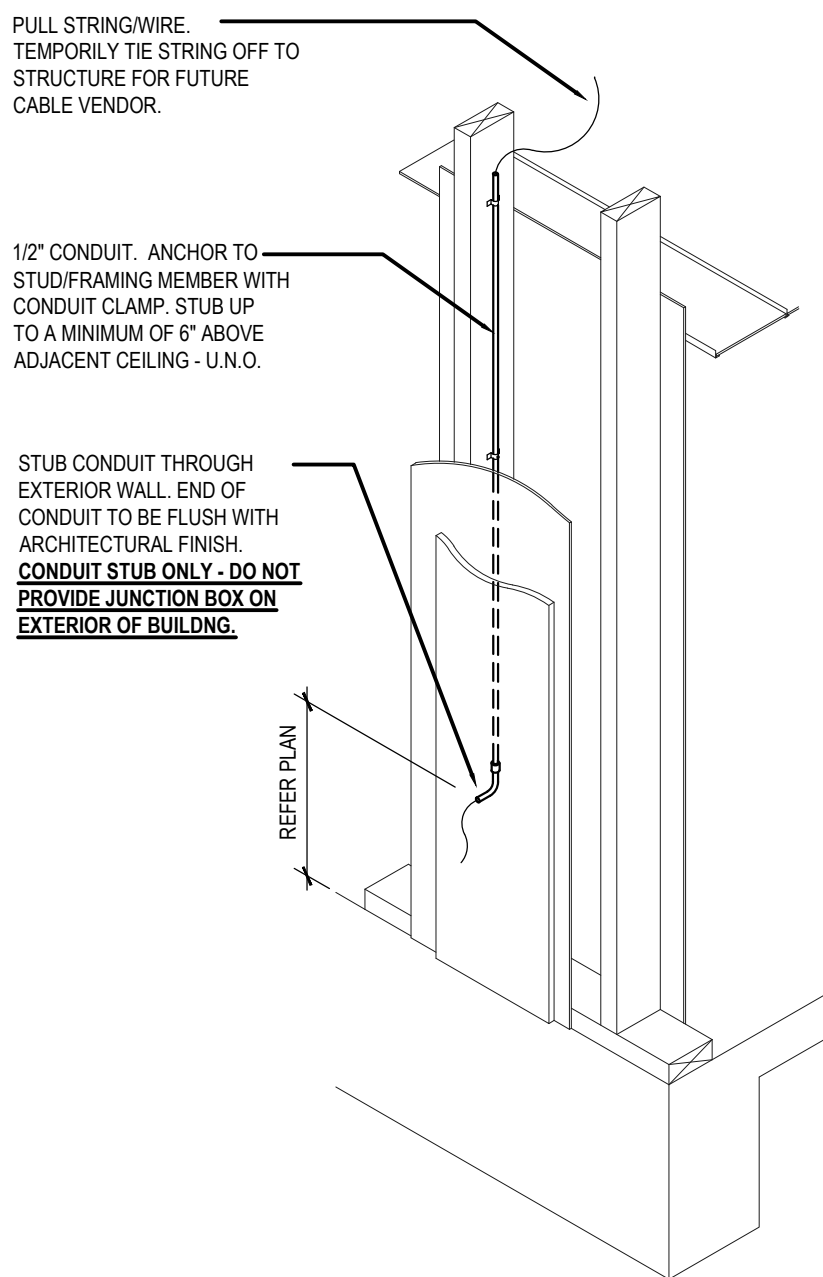
TWW REMODEL

E-101

LIGHTING FLOOR PLAN

TRUE WARM & WELCOME

BID ISSUE



PANDA EXPRESS, INC.
1683 Walnut Grove Ave.
Rosemead, California
91770
Telephone: 626.799.9898
Facsimile: 626.372.8288

All ideas, designs, arrangement and plans indicated or represented by this drawing are the property of Panda Express Inc. and were created for use on this specific project. None of these ideas, designs, arrangements or plans may be used by or disclosed to any person, firm, or corporation without the written permission of Panda Express Inc.

REVISIONS:		

ISSUE DATE:		
1st	DEVELOPER REVIEW	07.15.19
2nd	SITE PLAN SUBMITTAL	08.26.19
3rd	SITE COMMENTS	09.05.19
4th	ISSUE FOR PERMIT	10.01.19
5th	ISSUE FOR BID	11.07.19

DRAWN BY: PM / KL / EA

PANDA PROJECT #: S8-20-D7163
ARCH PROJECT #: 19027

James F. Turner
Engineers, L.P.
Consulting Engineers
8340 Meadow Road, #160
Dallas, TX 75231
214.755.2900
DRAWMAN/DESIGNER/BJ
JC/APR/TNM
Exp. #42236
COK #CA-5874-E

ALABAMA
REGISTERED
No. 14970
PROFESSIONAL
ENGINEER
JAMES F. TURNER
11/1/19

Heights Venture
ARCHITECTURE • DESIGN
HOUSTON 1111 North Loop West, Suite 800 Houston, Texas 77008 713.866.1103 V
DALLAS 5741 Legacy Drive, Suite 320 Plano, Texas 75024 972.490.7262 V

PANDA EXPRESS
2096 INTERSTATE DR.
OPELIKA, AL, 36801
3600 FSDT
TWW REMODEL

- ALL ROOF MOUNTED EQUIPMENT SHALL BE IN NEMA-3R ENCLOSURES.
- ALL CONDUIT RUNS SHOWN ON THE ROOF SHALL BE RUN BELOW IN THE CEILING SPACE WHERE AMBIENT TEMPERATURE WILL BE BELOW 30° C. FINAL CONNECTIONS TO THE ROOF EQUIPMENT IS LIMITED TO 5'-0" OF DIRECT SOLAR EXPOSURE.
- VERIFY ALL FUSE SIZES AND TYPES WITH THE MECHANICAL EQUIPMENT MANUFACTURER PRIOR TO INSTALLATION.
- REVIEW THE MECHANICAL PLANS FOR HVAC CONTROL REQUIREMENTS AND SCOPE OF WORK PRIOR TO BIDDING AND INCLUDE ALL COSTS IN BID.
- VERIFY CONNECTION POINTS OF ALL HVAC EQUIPMENT PRIOR TO INSTALLATION. PROVIDE CONTROL VOLTAGE CONNECTION TO DUCT MTD. SMOKE DETECTOR AS REQUIRED BY MECHANICAL DRAWING M-100 AND INTERLOCK WITH FIREALARM.
- SEE MECHANICAL DRAWINGS FOR EXACT LOCATIONS OF MECHANICAL EQUIPMENT AND THERMOSTATS. PROVIDE RACEWAY SYSTEM FOR ALL CONTROL WIRING AS REQUIRED BY MECHANICAL DRAWING M-100.
- E.C. COORDINATE ELECTRICAL, MECHANICAL, FIRE ALARM (IF REQUIRED) FOR INTERLOCK SEQUENCE FOR FIRE SUPPRESSION.
- RESTROOM EXHAUST FAN TO BE POWERED FROM BACK OF HOUSE LIGHTING CIRCUIT. SEE DETAIL 5/E400 FOR ADDITIONAL INFORMATION.
- PROVIDE FUSES WITH A LET-THROUGH CURRENT OF NOT GREATER THAN 5KAIC.
- PROVIDE STARTERS AS REQUIRED.

ROOF PLAN GENERAL NOTES

2

NOT TO SCALE

E-104

- ROUTE HOMERUN THROUGH BACK OF HOUSE LIGHTING CIRCUIT. REFER TO LIGHTING PLAN, 1/E-101. FAN TO BE CONTROLLED BY SWITCH FOR BACK OF HOUSE LIGHTING.
- DUCT SMOKE DETECTOR. FURNISHED BY MECHANICAL/FACORY. WIRED BY ELECTRICAL / FIRE ALARM CONTRACTOR. FURNISH AND INSTALL ALL RACEWAY, WIRING, AND ADDITIONAL ACCESSORIES REQUIRED FOR CODE COMPLIANCE AND UNIT SHUTDOWN.
- CIRCUIT FEEDS FROM PANELBOARD - THROUGH HOOD CONTROL PANEL - UP TO ROOF. REFER TO DETAIL, SHEET 3/E-401 & KITCHEN HOOD SUBMITTAL DATA.
- REFER TO CONDENSING UNIT WIRING DIAGRAM, 7/E-400.
- STRUT RACK SUPPORT FOR EQUIPMENT DISCONNECT SWITCHES. REFER TO DETAIL, SHEET 2/E-401.
- PROVIDE AND INSTALL 2-1/2" DIA GALVANIZED RIGID METAL CONDUIT AND WEATHERHEAD +24" A.F.G. CONDUIT TO BE STRAPPED TO CLOSEST JOIST TO THE MANAGER'S STATION (FULL DEPTH). VERIFY EXACT LOCATION IN FIELD.
- DO NOT INSTALL UNTIL BACK DRAFT DAMPER INSTALLATION IS COMPLETE. UTILIZE FACTORY KNOCKOUTS FOR ELECTRICAL RUN FOR THIS FAN. REFER TO SHEET M-402.
- MOUNT PHOTOCELL AS DETAILED ON SHEET 12/E-400.
- STUB ELECTRICAL FEED FOR EF-1 & EF-2, THROUGH ROOF ON HINGE SIDE OF EXHAUST FANS, IN LOCATION AS SHOWN ON POWER ROOF PLAN. REFER TO DETAIL 3/M-501 FOR ADDITIONAL DETAILS.
- ROUTE POWER FEEDS VIA FACTORY PROVIDED THRU-BASE CONNECTION AREA. COORDINATE WITH MECHANICAL.
- UNIT INCLUDES FACTORY MOLDED CASE DISCONNECT SWITCH (NO OCP). VERIFY WITH MECHANICAL SUBMITTAL DATA. PROVIDE DISCONNECT IF / AS REQUIRED.

ROOF PLAN KEYED NOTES

3

NOT TO SCALE

E-104

ROOFTOP EQUIPMENT SCHEDULE										
TAG	DESCRIPTION	KW	H.P.	FLA	VOLT/Ø	WIRE, CONDUIT	CONN.	MOUNT HEIGHT	DISC. SW. WITH RK1 FUSES PER MFR'S REQ'S. AND/OR REMARKS	
RTU1	A/C UNIT			52.0	208V.3Ø	3 #4, #10 GND., 1" C.	<input type="checkbox"/>	AT UNIT	60A. 3P. 3F. WP ①④	
RTU2	A/C UNIT			52.0	208V.3Ø	3 #4, #10 GND., 1" C.	<input type="checkbox"/>	AT UNIT	60A. 3P. 3F. WP ①④	
RTU3	A/C UNIT			52.0	208V.3Ø	3 #4, #10 GND., 1" C.	<input type="checkbox"/>	AT UNIT	60A. 3P. 3F. WP ①④	
ACCU-1	CONDENSING UNIT			21.4	208V.3Ø	3 #10, #10 GND., 1" C.	<input type="checkbox"/>	AT UNIT	30A. 3P. 3F. WP ①	
ACCU-2	CONDENSING UNIT			21.4	208V.3Ø	3 #10, #10 GND., 1" C.	<input type="checkbox"/>	AT UNIT	30A. 3P. 3F. WP ①	
MA-1	MAKE-UP AIR UNIT	5.0	16.9	208V.3Ø	3 #12, #12 GND., 3/4" C.	<input type="checkbox"/>	AT UNIT	①④		
EF-1	EXHAUST FAN	2.0	7.5	208V.3Ø	3 #12, #12 GND., 3/4" C.	<input type="checkbox"/>	AT UNIT	①		
EF-2	EXHAUST FAN	2.0	7.5	208V.3Ø	3 #12, #12 GND., 3/4" C.	<input type="checkbox"/>	AT UNIT	①		
EF-3	EXHAUST FAN	1/4	5.6	120V.1Ø	2 #12, #12 GND., 3/4" C.	<input type="checkbox"/>	AT UNIT	30A. 2P. 1F. WP ①④		
31-S	W/I COOLER COND.			15.0	208V.1Ø	2 #12, #12 GND., 3/4" C.	<input checked="" type="checkbox"/>	AT UNIT	②③	
32-S1	W/I FREEZER COND.			10.0	208V.1Ø	2 #12, #12 GND., 3/4" C.	<input checked="" type="checkbox"/>	AT UNIT	②③	
10J-S1	ICE MACHINE COND.			11.8	208V.1Ø	2 #12, #12 GND., 3/4" C.	<input checked="" type="checkbox"/>	AT UNIT	②③	

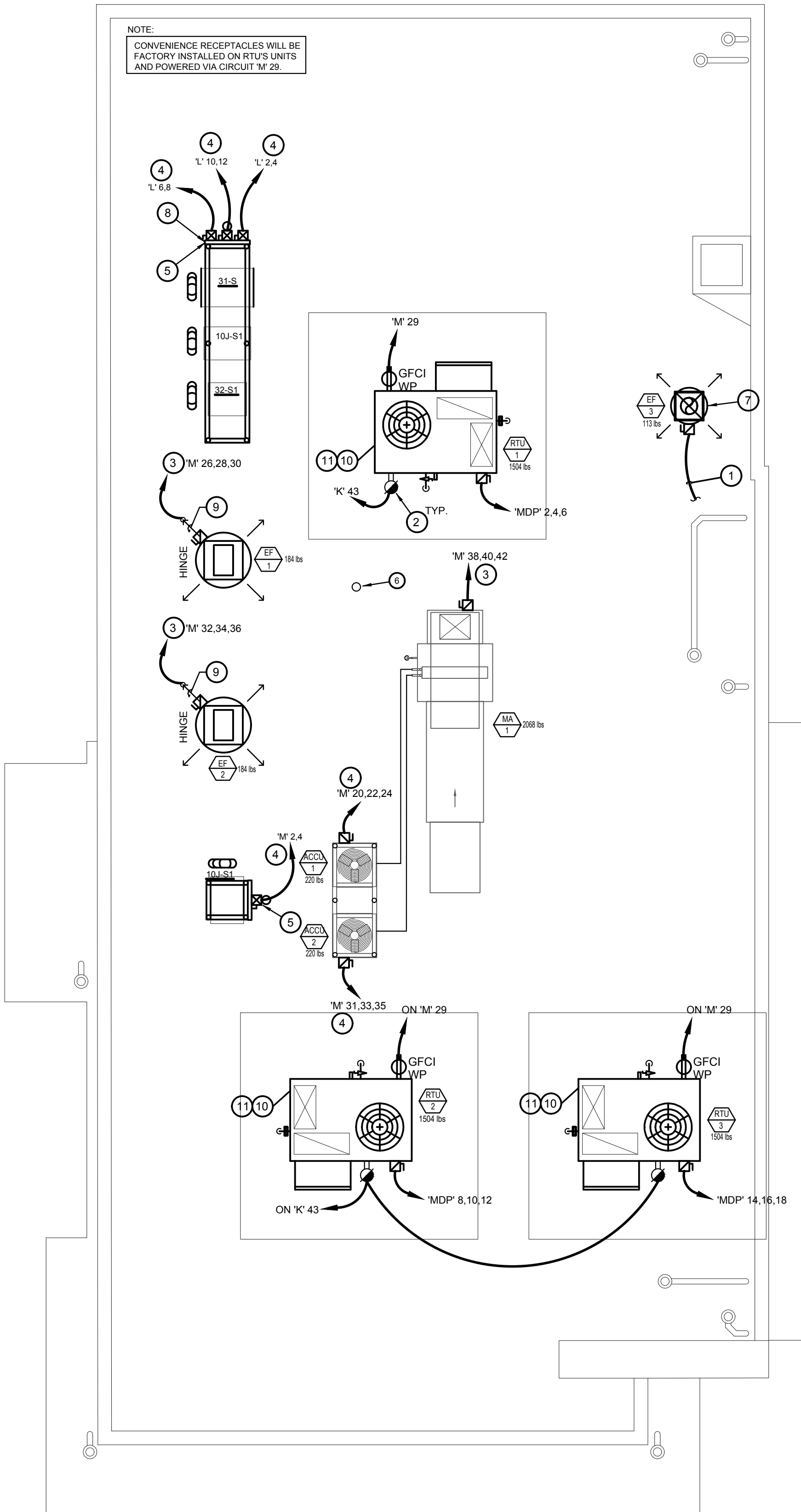
- ① DISCONNECT SWITCH PROVIDED WITH UNIT.
- ② COMBINATION 30A. 2P. 2F. WP DISCONNECT SWITCH WITH RK5 FUSES PER MANUFACTURER RECOMMENDATION.
- ③ COMBINE CIRCUITRY IN 1" CONDUIT FROM J-BOX ON EQUIPMENT DISCONNECT SWITCH SUPPORT. REFER TO DETAIL THIS SHEET, 1 / E-104.
- ④ ELECTRICAL FEEDS ARE TO BE ROUTED FROM PLENUM SPACE, UP THROUGH EQUIPMENT CURB, INTO BOTTOM OF EQUIPMENT, THROUGH FACTORY INSTALLED WATER TIGHT CONNECTIONS.

HVAC EQUIPMENT SCHEDULE

4

NOT TO SCALE

E-104



ROOF POWER PLAN

1

1/4" = 1'-0"

E-104



PANDA EXPRESS, INC.
1683 Walnut Grove Ave.
Rosemead, California
91770
Telephone: 626.799.9898
Facsimile: 626.372.8288

All ideas, designs, arrangement and plans indicated or represented by this drawing are the property of Panda Express Inc. and were created for use on this specific project. None of these ideas, designs, arrangements or plans may be used by or disclosed to any person, firm, or corporation without the written permission of Panda Express Inc.

REVISIONS:

ISSUE DATE:

1st	DEVELOPER REVIEW	07.15.19
2nd	SITE PLAN SUBMITTAL	08.26.19
3rd	SITE COMMENTS	09.05.19
4th	ISSUE FOR PERMIT	10.01.19
5th	ISSUE FOR BID	11.07.19

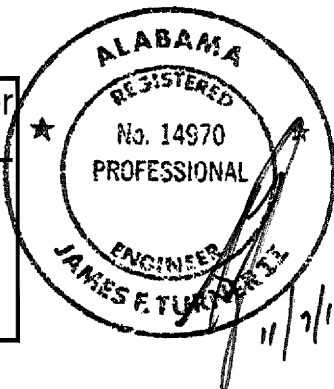
DRAWN BY: PM / KL / EA

PANDA PROJECT #: S8-20-D7163

ARCH PROJECT #: 19027

James F. Turner
Engineers, L.P.

Consulting Engineers
8340 Meadow Road, #160
Dall Las, TX 75231
214.755.2900
BROWNSIDE, TEXAS
OC/APPD:TNM
Lic #42728
COA #CA-5874-E



Heights Venture

ARCHITECTURE • DESIGN

HOUSTON 1111 North Loop West, Suite 800 Houston, Texas 77008 713.866.1103 V

DALLAS 5741 Legacy Drive, Suite 320 Plano, Texas 75024 972.450.7262 V

PANDA EXPRESS

2096 INTERSTATE DR.
OPELIKA, AL, 36801

3600 FSDT

TWW REMODEL

E-104

ROOF POWER PLAN

TRUE WARM & WELCOME

BID ISSUE

- MINIMUM CONDUCTOR SIZE THIS SHEET TO BE #10 CU, 3/4" CONDUIT.
- EXISTING POLES / POLE-MOUNTED LIGHTING TO BE REUSED. REPLACE BULBS AND CLEAN HEADS. EXISTING CIRCUITS (INDICATED ON PLANS) TO BE REUSED AND REROUTED THROUGH NEW TIME CLOCK CONTROL (REF. "TIME CLOCKS" / SHEET E-400).

SITE PLAN GENERAL NOTES

2

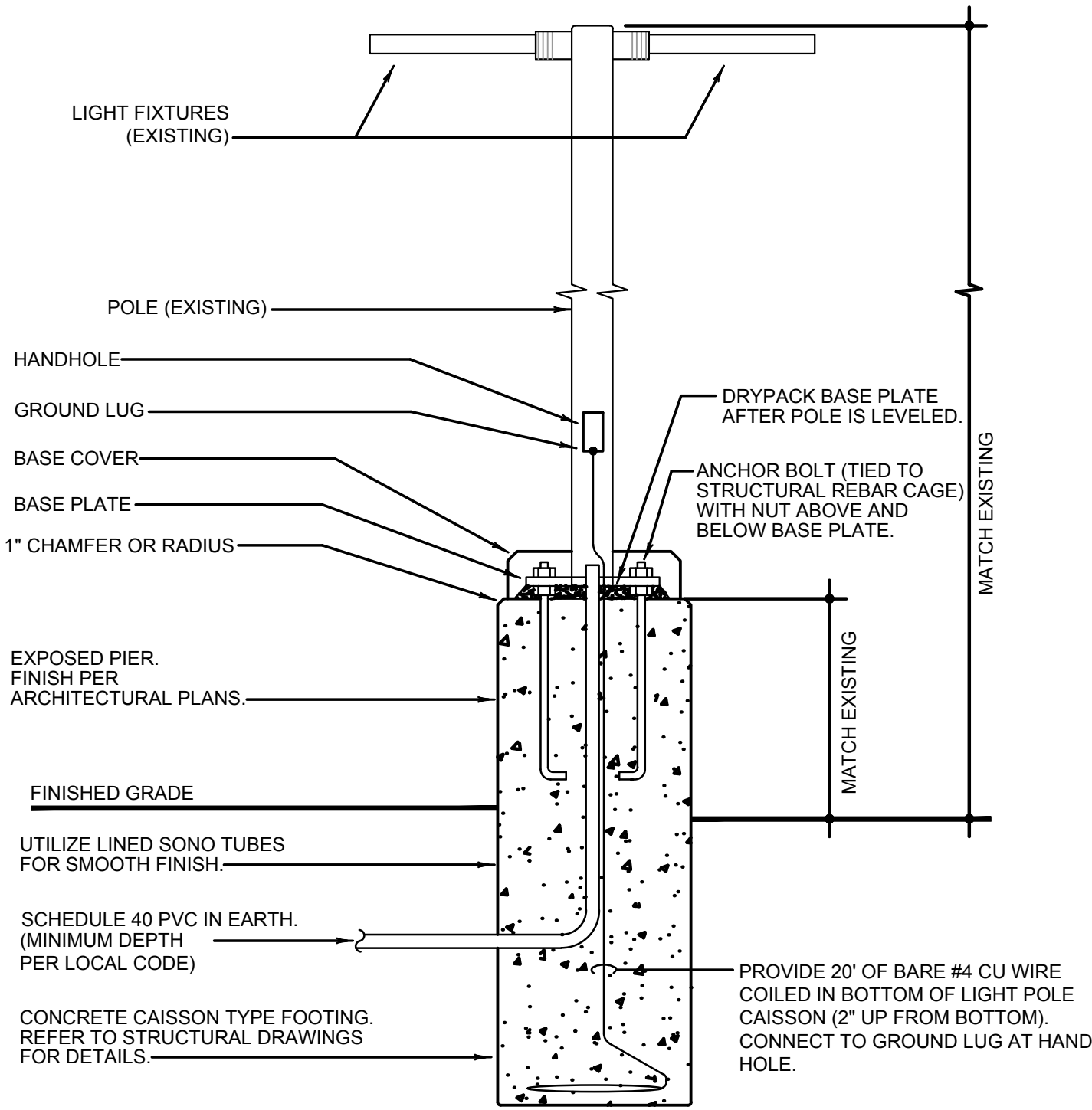
E-105

- FEED THROUGH LIGHTING CONTACTOR. REF: 11/E-400.
- STUB UP LOCATION FOR (3) 3/4" CONDUITS & PULL STRINGS, TO ENTER BUILDING & UP TO 6" ABOVE CEILING. REFER TO SHEET 11/E-401.
- STUB-UP LOCATION FOR MENU BOARD. SIGN DISCONNECT PROVIDED BY SIGN CONTRACTOR. COORDINATE PRECISE LOCATION WITH ARCHITECT / OWNER.
- DRIVE-THRU SENSOR LOOP. COORDINATE LOCATION. REFER TO DETAIL 1 / E-401.
- STUB-UP FOR DRIVE-THRU ORDER CONFIRMATION MONITOR. COORDINATE LOCATION WITH ARCHITECT / OWNER.
- CONNECT TMB TO EXISTING TELEPHONE/DATA SERVICE DEMARCATION FOR BUILDING. COORDINATE SERVICE WITH UTILITY COMPANY.
- RELOCATE EXISTING LIGHT POLE AS SHOWN TO ACCOMMODATE NEW DUMPSTER ENCLOSURE. REROUTE EXISTING UNDERGROUND CONDUIT/WIRING TO NEW POLE LOCATION. PROVIDE NEW POLE FOUNDATION PER DETAIL 4 / THIS SHEET.

SITE PLAN KEYED NOTES

3

E-105



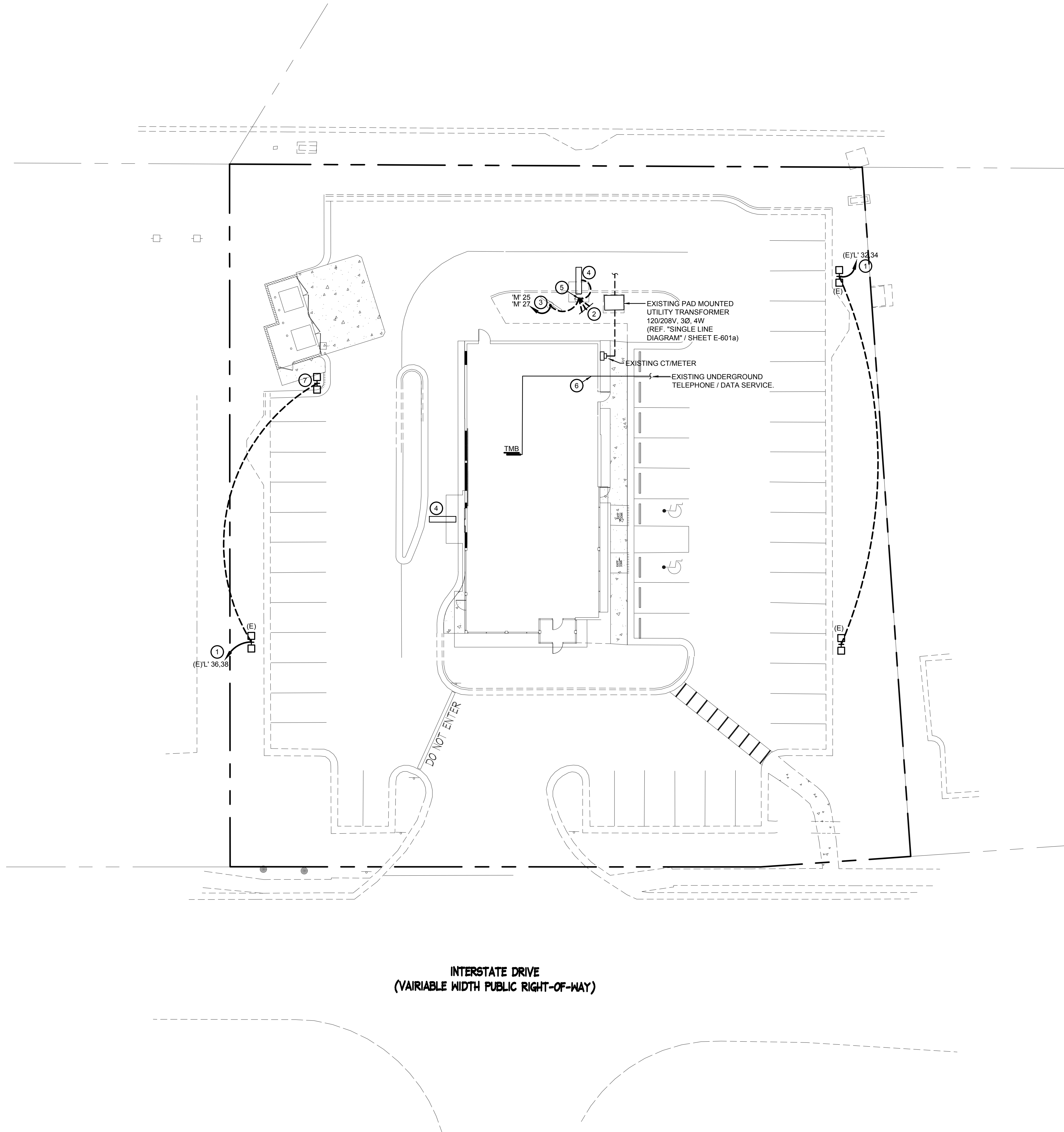
NOTE: THIS DETAIL IS FOR ELECTRICAL INSTALLATION ONLY. REFER TO STRUCTURAL DRAWINGS FOR MORE INFORMATION.

POLE FOUNDATION DETAIL

4

NO SCALE

E-106



SITE & EXTERIOR LIGHTING PLAN

1

1" = 16'-0"

E-105



PANDA EXPRESS, INC.
1683 Walnut Grove Ave.
Rosemead, California
91770

Telephone: 626.799.9898
Facsimile: 626.372.8288

All ideas, designs, arrangement and plans indicated or represented by this drawing are the property of Panda Express Inc. and were created for use on this specific project. None of these ideas, designs, arrangements or plans may be used by or disclosed to any person, firm, or corporation without the written permission of Panda Express Inc.

REVISIONS:

NO.	DESCRIPTION	DATE

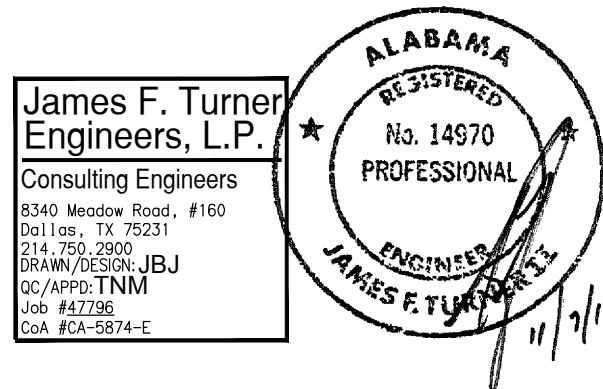
ISSUE DATE:

1st	DEVELOPER REVIEW	07.15.19
2nd	SITE PLAN SUBMITTAL	08.26.19
3rd	SITE COMMENTS	09.05.19
4th	ISSUE FOR PERMIT	10.01.19
5th	ISSUE FOR BID	11.07.19

DRAWN BY: PM / KL / EA

PANDA PROJECT #: S8-20-D7163

ARCH PROJECT #: 19027



Heights Venture
ARCHITECTURE • DESIGN

HOUSTON 1111 North Loop West, Suite 800 Houston, Texas 77008 713.866.1103 V
DALLAS 5741 Legacy Drive, Suite 320 Plano, Texas 75024 972.490.7262 V

PANDA EXPRESS

2096 INTERSTATE DR.
OPELIKA, AL, 36801

3600 FSDT

TWW REMODEL

E-105

SITE & EXTERIOR LIGHTING PLAN

TRUE WARM & WELCOME

BID ISSUE



PANDA EXPRESS, INC.
1683 Walnut Grove Ave.
Rosemead, California
91770
Telephone: 626.799.9898
Facsimile: 626.372.8288

All ideas, designs, arrangement and plans indicated or represented by this drawing are the property of Panda Express Inc. and were created for use on this specific project. None of these ideas, designs, arrangements or plans may be used by or disclosed to any person, firm, or corporation without the written permission of Panda Express Inc.

REVISIONS:		

ISSUE DATE:		
1st	DEVELOPER REVIEW	07.15.19
2nd	SITE PLAN SUBMITTAL	08.26.19
3rd	SITE COMMENTS	09.05.19
4th	ISSUE FOR PERMIT	10.01.19
5th	ISSUE FOR BID	11.07.19

DRAWN BY: PM / KL / EA

PANDA PROJECT #: S8-20-D7163

ARCH PROJECT #: 19027

James F. Turner
Engineers, L.P.
Consulting Engineers
8340 Meadow Road, #160
Dallas, TX 75231
214.750.2900
JFT/APPD:TNM
JFT 04/23/20
COA #CA-5874-E

ALABAMA
REGISTERED
No. 14970
PROFESSIONAL
ENGINEER
JAMES F. TURNER
11/1/19

Heights Venture
ARCHITECTURE + DESIGN

HOUSTON 1111 North Loop West, Suite 800
1111 North Loop West, Suite 800
Houston, Texas 77008
713.866.1163 V

DALLAS 5741 Legacy Drive, Suite 320
Plano, Texas 75024
972.450.7282 V

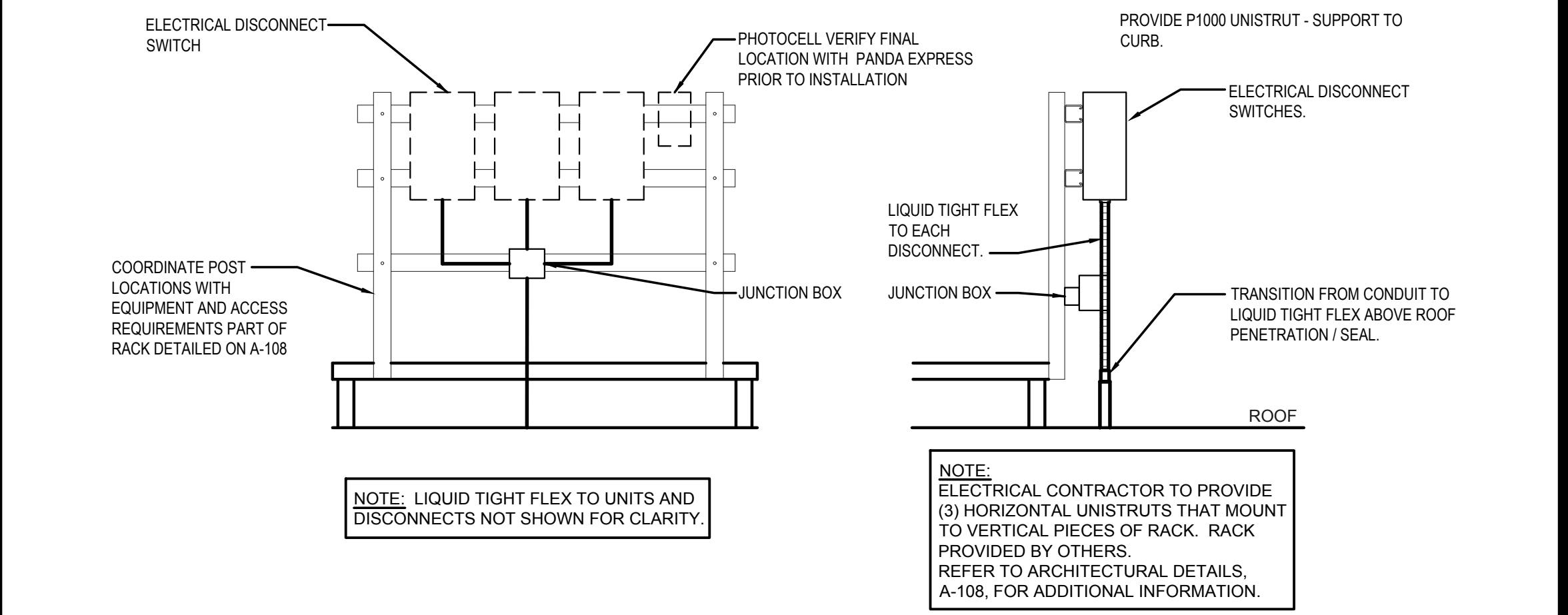
PANDA EXPRESS

2096 INTERSTATE DR.
OPELIKA, AL, 36801
3600 FSOT
TWW REMODEL

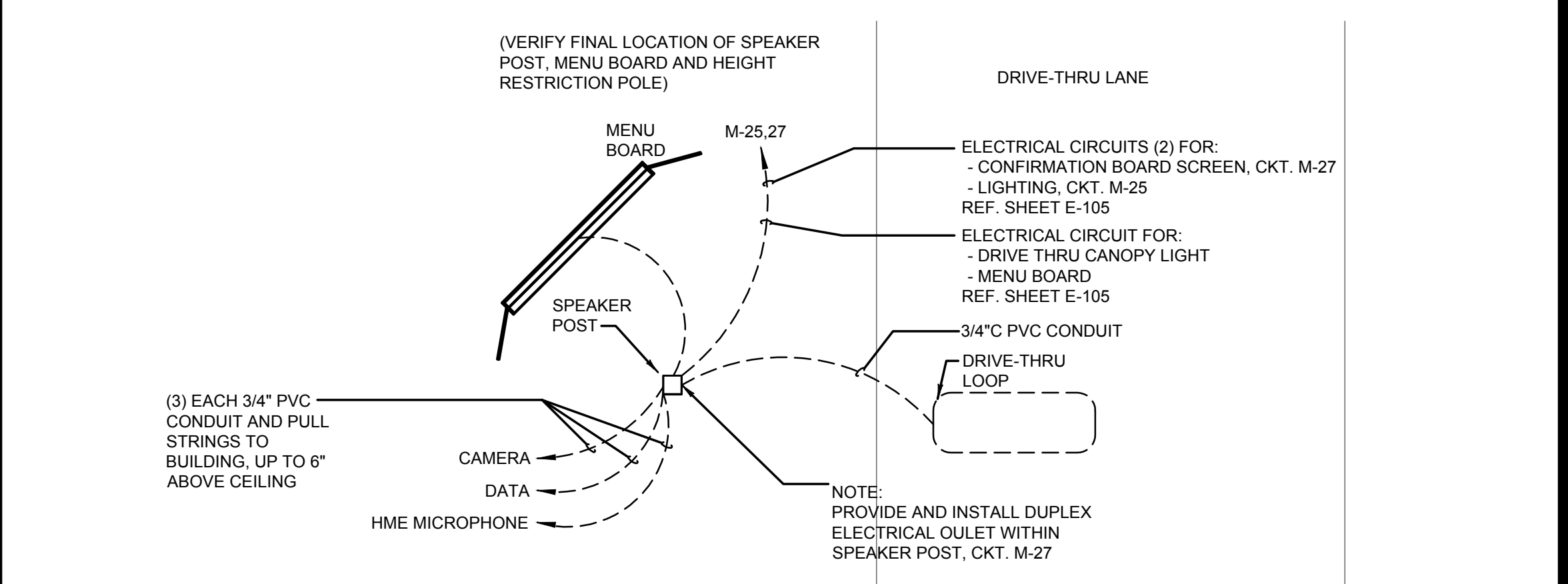
E-401

ELECTRICAL DETAILS, DIAGRAMS

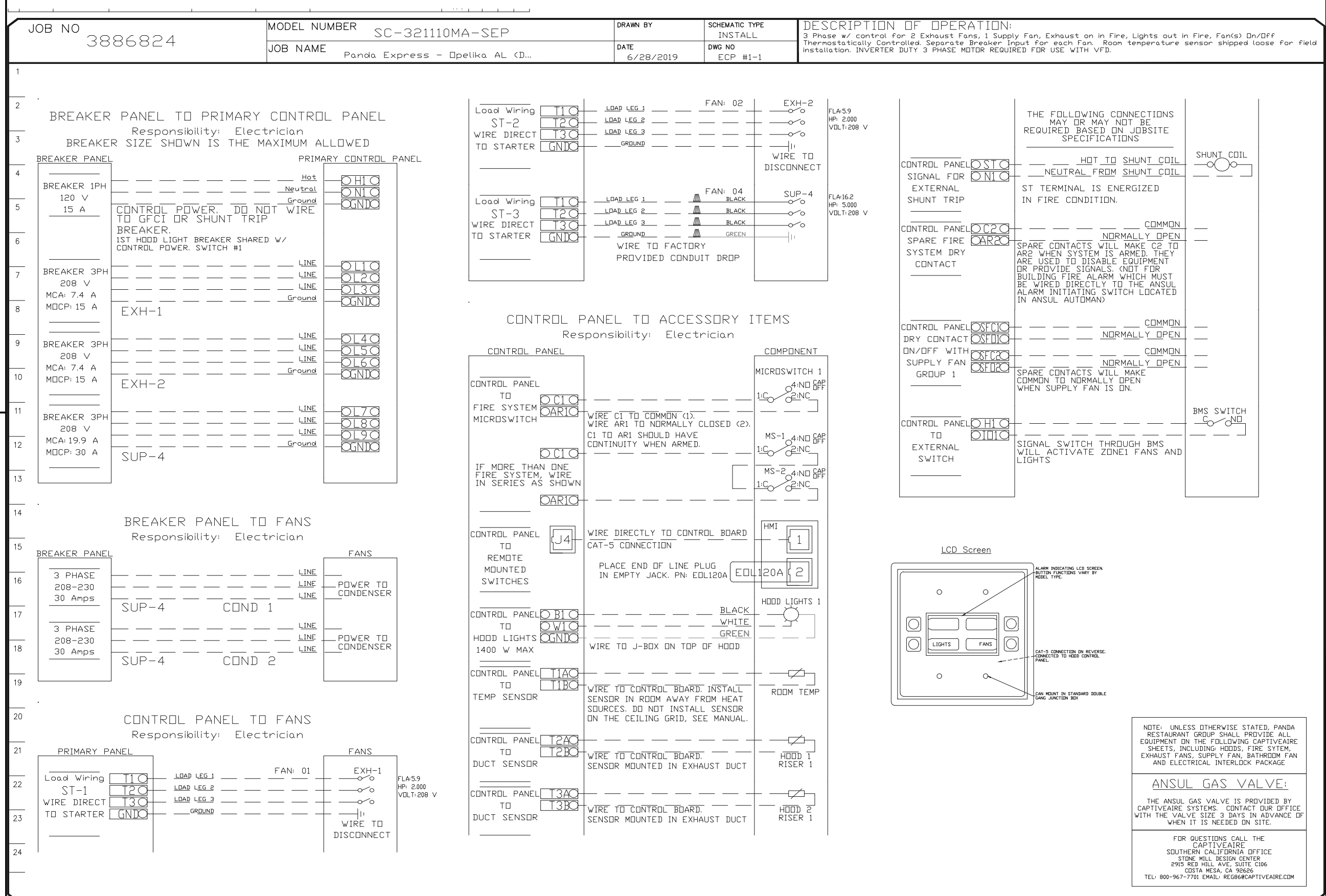
BID ISSUE



EQUIPMENT DISCONNECT SWITCH SUPPORT 2
NOT TO SCALE E-401



MENU BOARD & SENSOR LOOP 1
NOT TO SCALE E-401



KITCHEN EXHAUST SYSTEM DIAGRAM 3
NOT TO SCALE E-401



REVISIONS:

ISSUE DATE:

DRAWN BY: PM / KL / EA

PANDA PROJECT #: S8-20-D7163

ARCH PROJECT #: 19027



HOUSTON	DALLAS
1111 North Loop West, Suite 800	5741 Legacy Drive, Suite 320
Houston, Texas 77008	Plano, Texas. 75024
713 869 1103 V	972 490 7292 V

PANDA EXPRESS

2096 INTERSTATE DR
OPELIKA, AL, 36801

3600 FSDT

TWW REMODEL

E-601b

PANELS. SINGLE LINE. LOAD CALC'S

TRUE WARM & WELCOME

BID ISSUE

PROVIDE AN ARC FLASH WARNING SIGN PER NEC 110.16.

EXISTING PANELBOARD L

208Y/120; 3-PHASE

/4 WIRE

BOLT-ON W/ EQUIPMENT AND ISOLATED GROUND BUS

225 A MLO

225 MAIN BUS

100% NEUTRAL BUS

LOCATION: SERVICE ROOM

MOUNT: SURFACE

TYPE: NEMA 1

65/10 KAIC SERIES RATED BUS AND BRACING

L	R	M	K	O	C.B.	POLE	LOAD AREAS			Ø	Ø	Ø	LOAD AREAS			POLE	C.B.	O	K	M	R	L
							AND LOCATION			A	B	C	AND LOCATION									
					20/1	1	SPARE						ICE MACHINE COND '10J-S'1"			2	20/2					1227
				132	20/1	3	ICE MACHINE '10J' (GFCI)						-			4	-					1227
				1800	20/1	5	GAS WATER HEATER 'GWH-1' (GFCI)						WALK IN FREEZER COND '32-S'1"			6	25/2					1040
			1780		20/1	7	ICE TEA BREWER '9D' (VD)						-			8	-					1040
340					20/1	9	LTG - RR / UTILITY RM / BACKROOM						WALK IN COOLER COND '31-S'1"			10	20/2					1560
					20/1	11	SPARE						-			12	-					1560
				1200	20/1	13	D/T WINDOW 'M10' / SENSOR BAR						SPARE			14	20/1					
			1300		20/1	15	INDUCTION DRY WELL '3F',3G' (VD) (GFCI)						SPARE			16	20/1					
			1950		20/1	17	INDUCTION DRY WELL '3F',3G' (VD) (GFCI)						SPARE			18	20/1					
			3000	40/3	19		ELECTRIC GRILL 23B						SPARE			20	20/1					
			3000	-	21	-	-						SPARE			22	20/1					
			3000	-	23	-	-						SPARE			24	20/1					
				S/T	25		SHUNT TRIP FOR CKT 19,21,23						SPARE			26	20/1					
			1950		20/1	27	INDUCTION DRY WELL '3F',3G' (VD) (GFCI)						SPARE			28	20/2					
			1950		20/1	29	INDUCTION DRY WELL '3F',3G' (VD) (GFCI)						-			30	-					
					20/1	31	SPARE						(E) EXTERIOR POLE MOUNTED LTG (VD) (C)			32	20/2					800
					20/1	33	SPARE						-			34	-					800
					20/1	35	SPARE						(E) EXTERIOR POLE MOUNTED LTG (VD) (C)			36	20/2					800
					20/1	37	SPARE						-			38	-					800
					20/1	39	SPARE						SPARE			40	20/1					
					20/1	41	SPARE						SPARE			42	20/2					
					20/1	43	SPARE						-			44	-					
					20/1	45	SPARE						SPARE			46	20/1					
					20/1	47	SPARE						SPARE			48	20/1					
					20/2	49	SPARE						SPARE			50	20/1					
					-	51	-						SPARE			52	20/1					
					20/1	53	SPARE						SPARE			54	20/1					

CONNECTED KVA 3Ø

DEMAND

AMPS

LIGHTING	3.5	3.5	100%	9.8
RECEPTACLE	0.0	0.0	N/A	0.0
MOTOR	7.7	7.7	100%	21.2
*KITCHEN	17.9	11.7	65%	32.3
OTHER	3.1	3.1	100%	8.7
SPARE	0.0	0.0	N/A	0.0
TOTAL	32.3	26.0		72.1

FEEDER AMPACITY ADJUSTMENTS

LIGHT AMPS	2.5
MOTOR AMPS	3.2

CONNECTED 3Ø LOAD CALCULATIONS

9.8	TOTAL KVA (ØA) =	82.0 AMPS
10.3	TOTAL KVA (ØB) =	85.8 AMPS
12.1	TOTAL KVA (ØC) =	100.8 AMPS

PER NEC 220.51 - 220.60

89.5	TOTAL CONNECTED 3Ø AMPS
17.2	NEUTRAL AMPS
19%	IMBALANCE

78 MINIMUM FEEDER AMPS

REMARKS:

(E) - EXISTING

*KITCHEN EQUIPMENT SHOWN AT 65% IN PANEL TOTALS PER NEC (KITCHEN EQUIPMENT).

(IG) TERMINATE GROUND ON ISOLATED GROUND BUS.

(C) ROUTE CIRCUIT THROUGH LIGHTING CONTACTOR CONTROLLED BY TIMECLOCK. REFER TO DETAIL 11 / SHEET E-400.

(VD) WIRE SIZE INCREASE DUE TO VOLTAGE DROP. SIZE EQUIPMENT GROUND CONDUCTOR PROPORTIONALLY PER NEC.

LEAVE ALL SPARES IN THE OFF POSITION.

PANEL SCHEDULES

1

NOT TO SCALE

E-601b