

LEGEND

- DIMENSION POINT-NOTHING FOUND OR SET
- ✕ FOUND MONUMENT AS NOTED
- ◎ FOUND 3/4" CIP PER (2) STAMPED FOR CORNER OF SD D-45 LOTS 6 AND 7
- FOUND 2" CIP PER (1) STAMPED W.S.G.E. L.S. 2029
- SET 3/4" CIP STAMPED "L.S. 5093, 2014"
- ( ) RECORD INFORMATION
- M MEASURED INFORMATION
- △ NGS CONTROL POINT

NOTES

1) THE PURPOSE OF THIS SURVEY IS TO ESTABLISH THE FOREBAY PARK SITE AS DEFINED BY THE FERC (FEDERAL ENERGY REGULATORY COMMISSION) BOUNDARY TO THE WEST AND THE FRACTIONAL SECTION LINES TO THE EAST AND NORTH AS REQUIRED BY SECTION 8762 (B) (4) AND (5) OF THE PROFESSIONAL LAND SURVEYORS ACT.

2) ALL MEASURED DISTANCES SHOWN ON THIS MAP ARE GRID DISTANCES. MULTIPLY BY 1.00024481242 TO OBTAIN GRID DISTANCES.

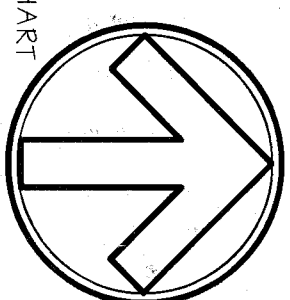
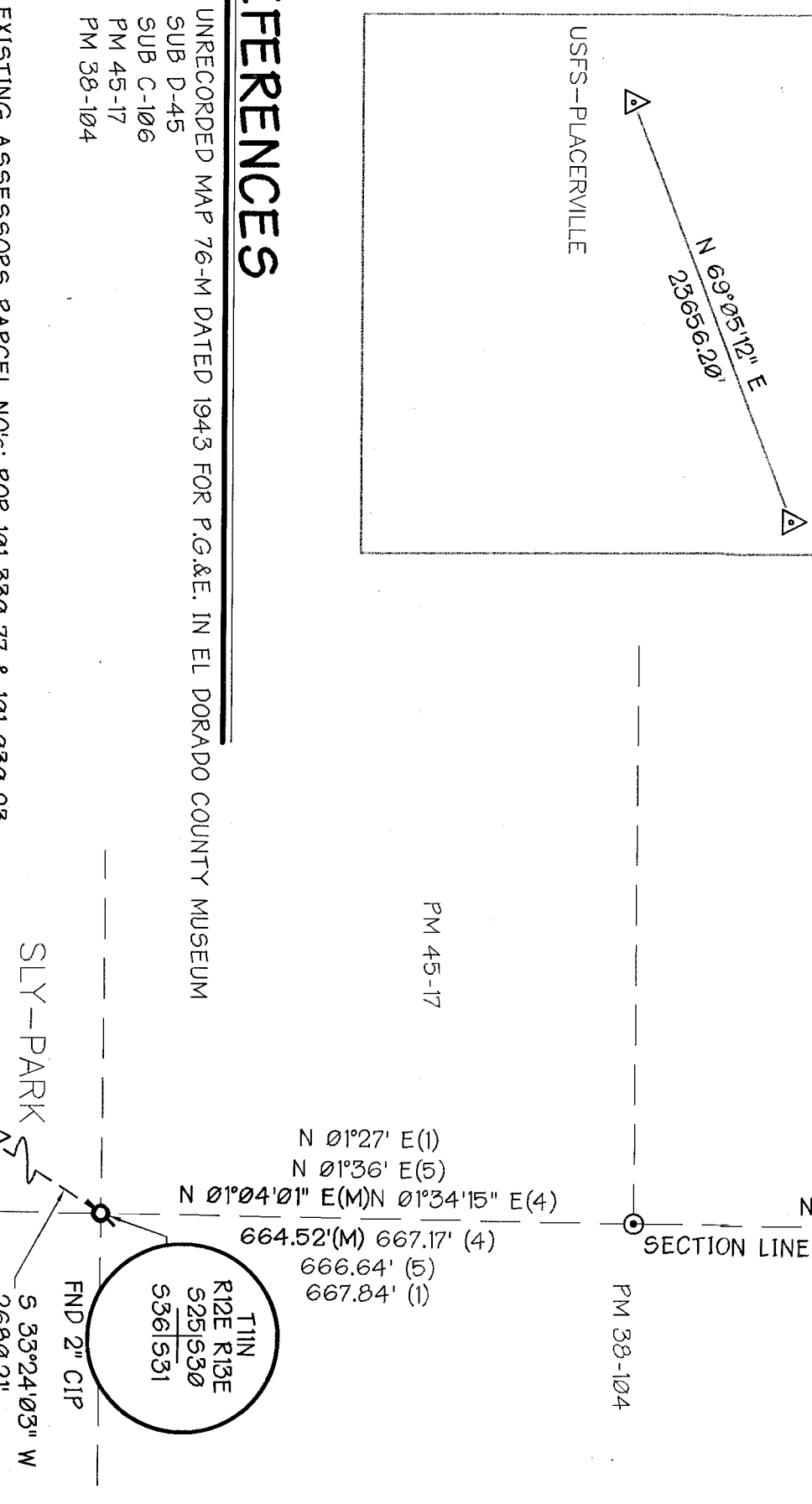
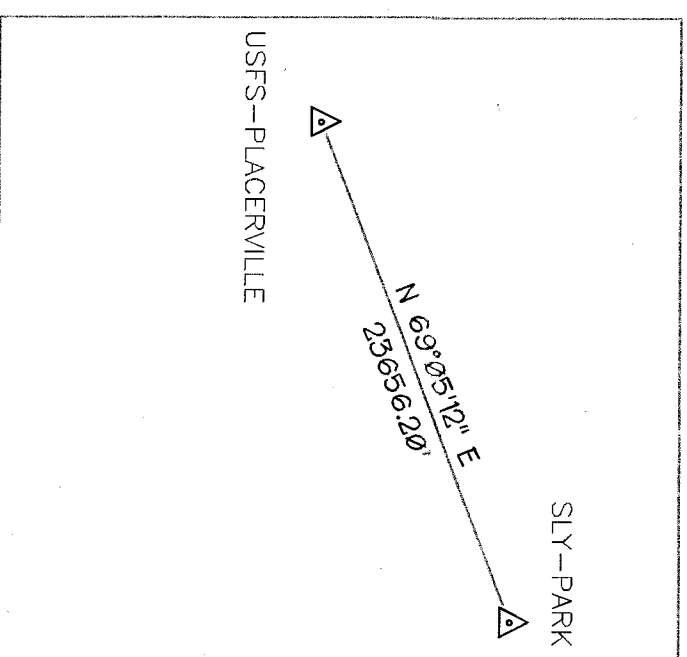
BASIS OF BEARINGS

THE BASIS OF BEARING FOR THIS SURVEY IS THE CALIFORNIA STATE PLAN COORDINATE SYSTEM, ZONE 2. BASIS OF BEARING IS ESTABLISHED FROM TIES TO THE FOLLOWING NGS POINTS AS SHOWN FROM THE 2010.00 EPOCH:

PID D46459 "USFS PLACERVILLE" N: 20032782.19 E: 604290164  
PID D46458 "SLY PARK" N: 2041224.36 E: 6964993.99

REFERENCES

- (1) UNRECORDED MAP 76-M DATED 1943 FOR P.G.A.E. IN EL DORADO COUNTY MUSEUM
- (2) SUB D-45
- (3) SUB C-106
- (4) PM 45-17
- (5) PM 38-104



Record of Survey

A PORTION OF THE EAST 1/2 OF SECTION 25 T.11N., R.12 E. M.D.M.

COUNTY of EL DORADO STATE of CALIFORNIA

DECEMBER, 2014 1"=200' SHEET 1 of 1

CARLTON ENGINEERING INC.

SURVEYOR'S STATEMENT

THIS MAP CORRECTLY REPRESENTS A SURVEY MADE BY ME OR UNDER MY DIRECTION IN CONFORMANCE WITH THE REQUIREMENTS OF THE PROFESSIONAL LAND SURVEYORS ACT AT THE REQUEST OF:

El Dorado County IN DECEMBER OF 2014



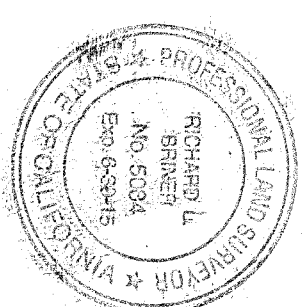
ALAN CARLTON - L.S. 5093

DATED 12-31-14

COUNTY SURVEYOR'S STATEMENT

THIS MAP HAS BEEN EXAMINED IN ACCORDANCE WITH SECTION 8766 OF THE PROFESSIONAL LAND SURVEYORS ACT THIS 31st DAY OF DEC., 2014

RICHARD L. BRINER L.S. 5084  
COUNTY SURVEYOR  
COUNTY OF EL DORADO, CALIFORNIA



PHILIP R. MOSBACHER L.S. 7109  
DEPUTY SURVEYOR  
COUNTY OF EL DORADO, CALIFORNIA

COUNTY RECORDER'S STATEMENT

FILED THIS 14th DAY OF JANUARY, 2015, AT 14:15:59  
IN BOOK 34 OF RECORD OF SURVEYS AT PAGE 70  
AT THE REQUEST OF EL DORADO COUNTY

DOCUMENT NUMBER 2015-0000670

William F. Schultz

WILLIAM F. SCHULTZ  
COUNTY RECORDER, CLERK  
COUNTY OF EL DORADO

BY: [Signature] DEPUTY