

# TRACT 2662

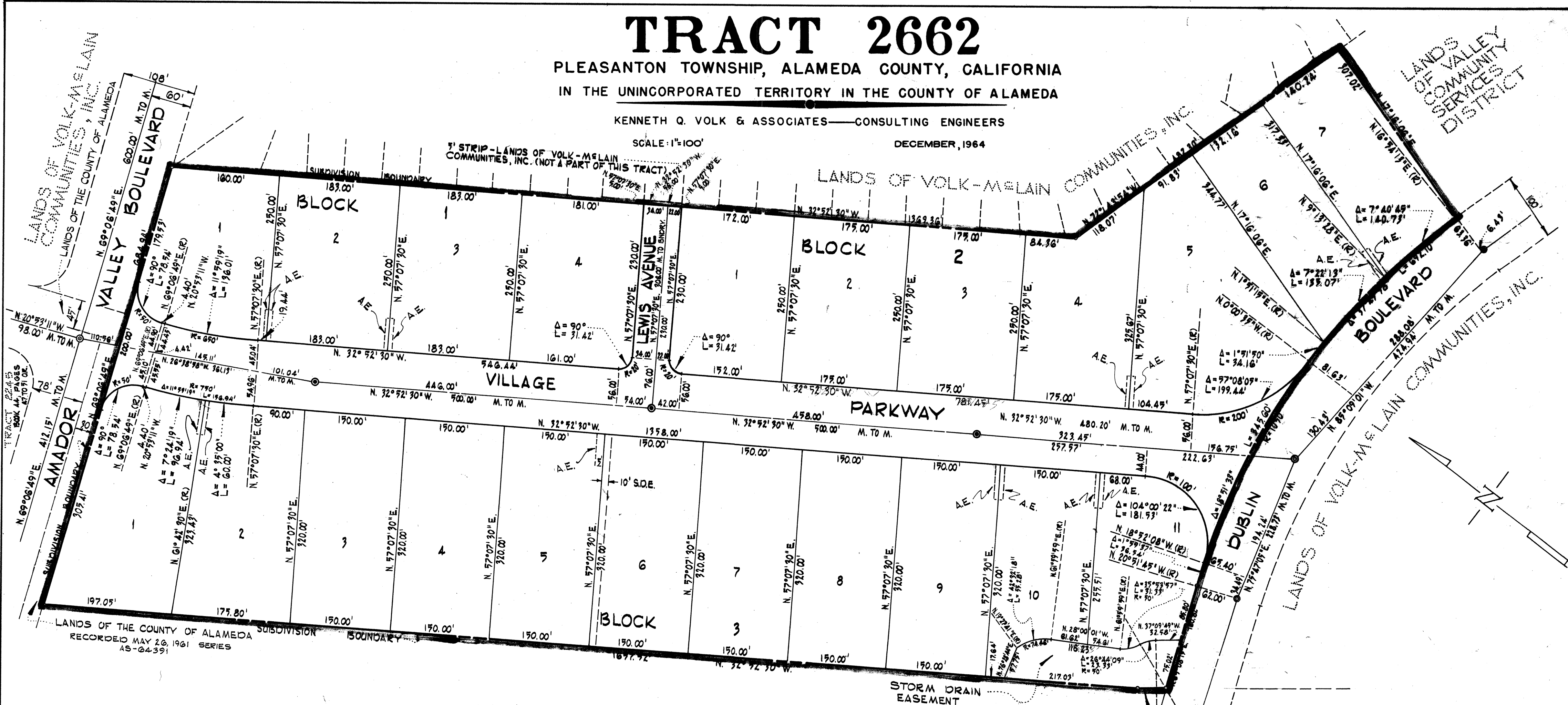
PLEASANTON TOWNSHIP, ALAMEDA COUNTY, CALIFORNIA  
IN THE UNINCORPORATED TERRITORY IN THE COUNTY OF ALAMEDA

KENNETH Q. VOLK & ASSOCIATES—CONSULTING ENGINEERS

DECEMBER, 1964

SCALE: 1"=100'

7' STRIP—LANDS OF VOLK-MELAIN COMMUNITIES, INC. (NOT A PART OF THIS TRACT)



INTERSTATE ROUTE 680

## LEGEND

- INDICATES
- EXTERIOR BOUNDARY ANGLE POINT
- EXISTING MONUMENT
- MONUMENT SET
- LENGTH OF ARC
- RADIUS OF ARC
- CENTRAL ANGLE OF ARC
- RADIAL LINE
- PUBLIC UTILITY EASEMENT
- STORM DRAIN EASEMENT
- SANITARY SEWER EASEMENT
- ANCHOR EASEMENT
- LOT LINE
- (UNLESS OTHERWISE SHOWN ON MAP)

## BASIS OF BEARINGS

THE BEARING OF THE LINE BETWEEN THE MONUMENTS AT THE INTERSECTIONS OF CONCHUE DRIVE AND VILLAGE PARKWAY WITH AMADOR VALLEY BOULEVARD AS SAID MONUMENTS ARE SHOWN UPON THE MAP OF TRACT 2245, PLEASANTON TOWNSHIP, ALAMEDA COUNTY, CALIFORNIA, IS TAKEN AS N. 69°06'49"E.

## BUILDING SETBACK

BUILDING SETBACK LINES TO BE AS REQUIRED BY THE ORDINANCE CODE OF THE COUNTY OF ALAMEDA TITLE 9, CHAPTER 2, AND AMENDMENTS THERETO.

## NOTE

ALL DISTANCES SHOWN ON THIS MAP ARE GROUND DISTANCES.

AX76905

SHEET 2 OF 2

AX 76905. Filed June 4<sup>th</sup> 1965. Book 50 Page 36A