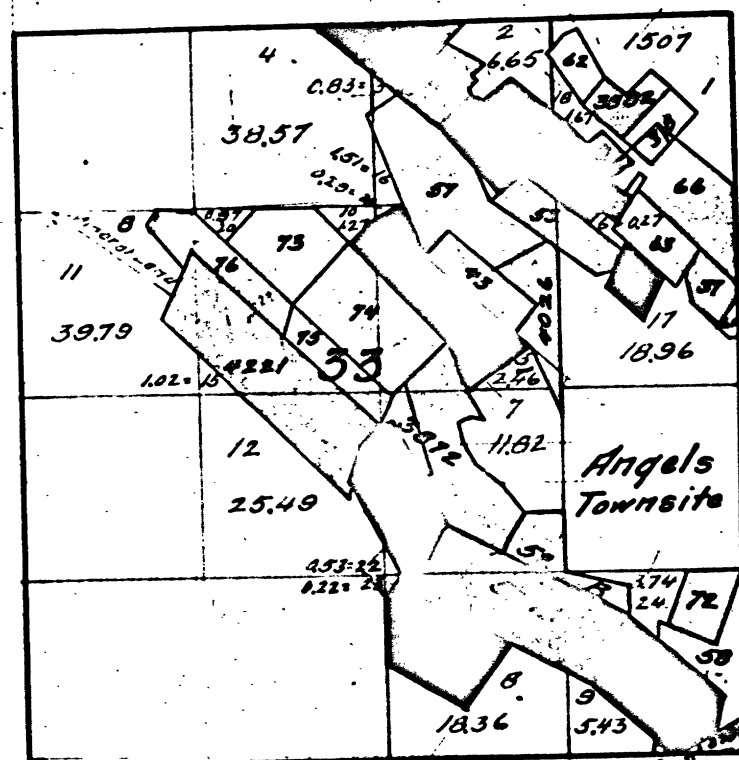


Township N° 3 North, Range N° 13 East, Mount Diablo Meridian, California.

T. 3. N. R. 13. E. M. D. M.



- 80-775-37 Stickie Quartz Mine  
 370-197-38 Dead Horse Quartz Mine and Mill Site  
 743-237-39 Angels  
 479-249-40 Boree  
 1245-320-41 Dr Hill  
 1248-309-43 Democrat Quartz Mine  
 356-544-44 Fritz and Mill Site V135-5  
 1345-570-45 Lightner Quartz Mine  
 1997-528-46 Gold Cliff Quartz Mine  
 1997-528-46 Mill Site  
 2036-55 Crystal Quartz Mine  
 2682-57 Oheida  
 2508-58 Peachy Placer Mine Tract N° 1  
 59 2  
 60 2  
 3040-62 Duffy Quartz Mine  
 3065-63 Ulico  
 3066-64 Jackson  
 3067-65 Hasberry  
 3068-66 George Washington Quartz Mine  
 3085-68 Billings Quartz Mine  
 3158-72 Anna  
 3257-73 Brown, Smyth, Ryland Con. Quartz Mine, Martinusen Loc.  
 74 Johnson  
 75 Smyth  
 76 Hale  
 3794 Fairfax Quartz Mine  
 3820 Specimen ~~Star~~ Quartz Mine Mill  
 3841 Plot Knob Quartz Mine  
 3872 Empire P.M. including a Lode  
 3873 North Star Quartz Mine  
 3882 Foster Q. Mining Claim  
 4026 January Quartz Mine  
 4136 North End Lode Claim  
 4221 Lindsay Quartz Mining Claim  
 MIN. L. 8 Segregation of Agricultural from Mineral Land, Lots 11 & 14 in Sec. 33  
 See field notes of Dep. Surv. A.B. Beauvais, dated March 26, 1885.

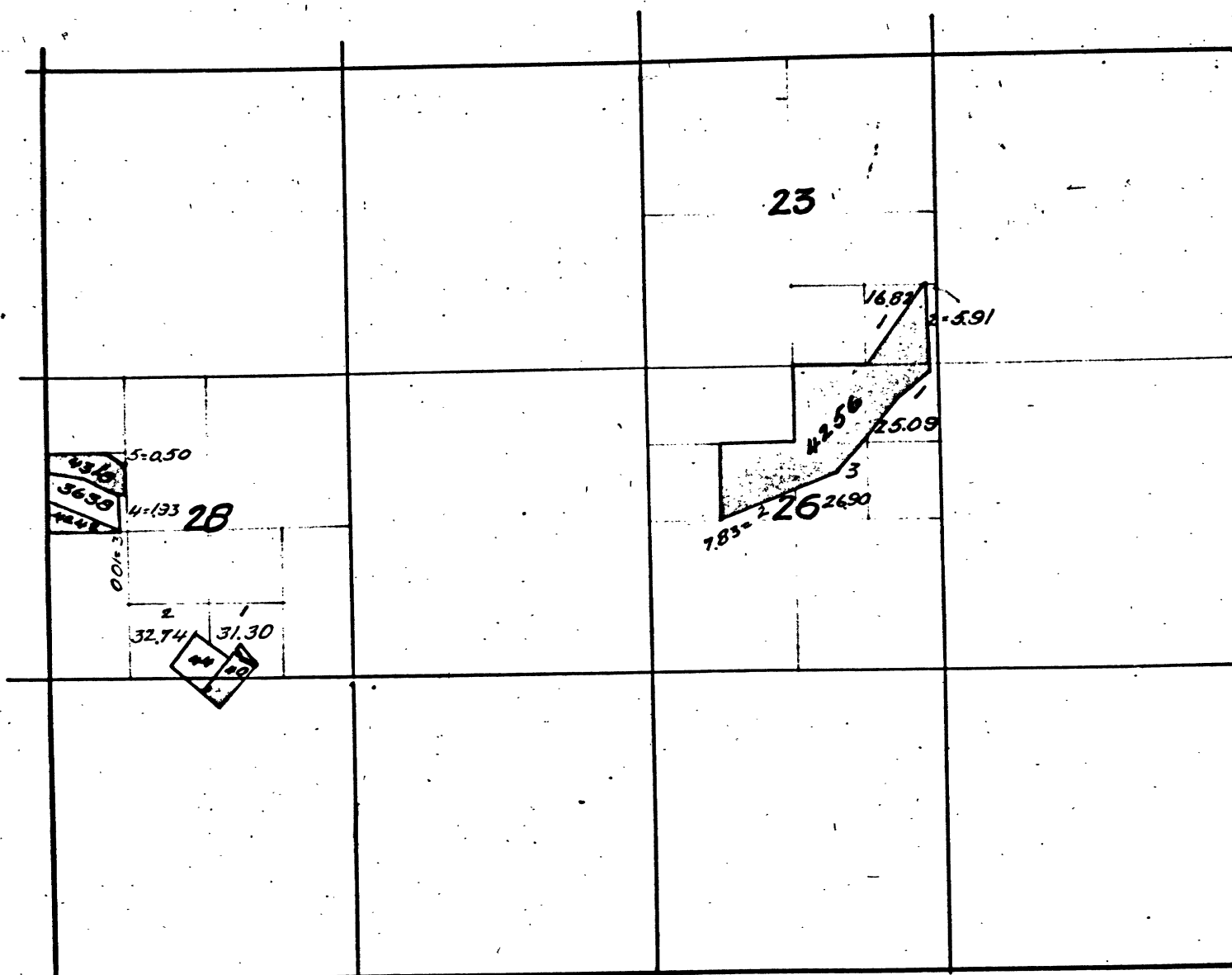
The above diagram of Sec. 33, Township N° 3 North, Range N° 13 East, Mount Diablo Meridian, California, is correctly constructed from official plats on file in this Office.

U.S. Surveyor General's Office.  
 San Francisco, California.

May 23, 1904

W. L. Graham.  
 U.S. Surveyor General for California.

T. 3. N. R. 13. E. M. D. M.



- 249-40 Boree Q.M. and Mill Site  
 356-544-44 Fritz V135-5  
 3638 Jolly Tor Quartz Mine V138-2  
 4242 John Buck Quartz Mining Claim  
 4256 Kentucky Placer Mine  
 4313 Mariposa Quartz Mine.

The above diagram of Sections 23, 26 and 28, Township N° 3 North, Range N° 13 East, Mount Diablo Meridian, California, is correctly constructed from official plats on file in this Office.

U.S. Surveyor General's Office.

San Francisco, California.

December 30, 1904

W. L. Graham  
 U.S. Surveyor General for California.

DEPARTMENT OF THE INTERIOR  
 GENERAL LAND OFFICE  
 Washington, D. C. Feb. 5, 1905.  
 I hereby certify that this is a true copy  
 of the plat of official survey of the lands  
 to which it relates, on file in this office.

H. J. [Signature]  
 Recorder, General Land Office.

5

T. 3. N. R. 13. E. M. D.

41 244

BLM 111