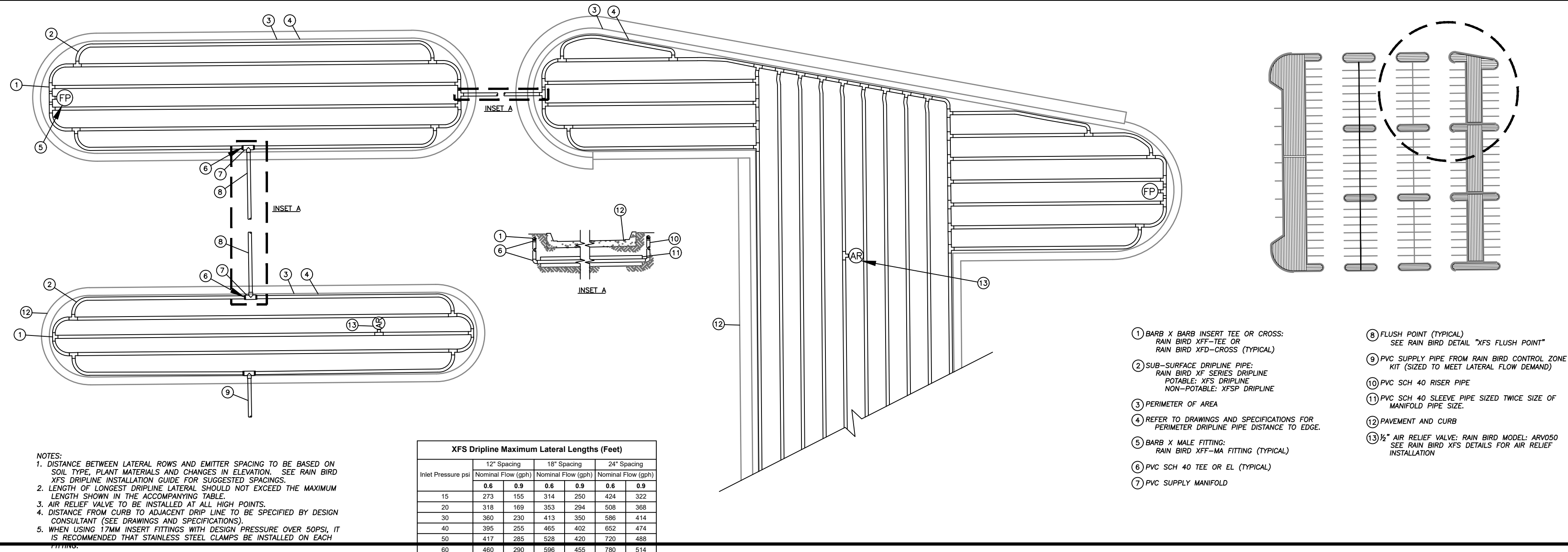
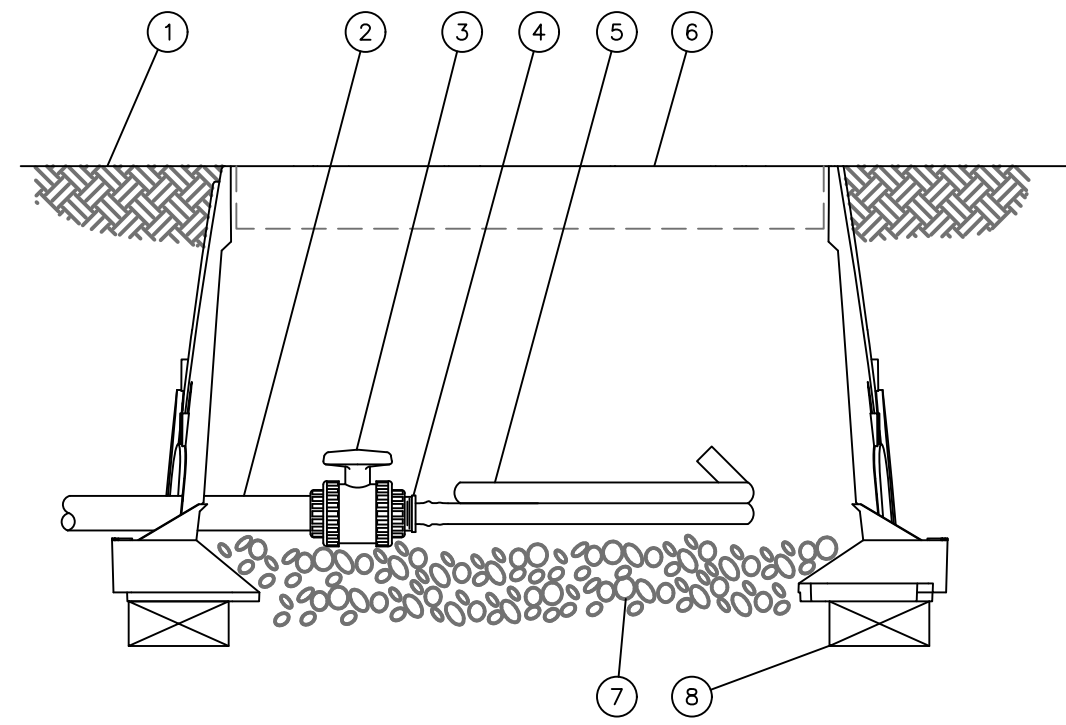


Apr. 14, 2021 - 2:58pm Plotted By: Irwin.gardner V:\025800--Panda Express - Master 2018\025800.18--Hamilton, OH\04--DWG\Eng\Sheet\025800.18--SUTS--LNBC--DTLS.dwg Layout: IRRIGATION DETAILS 2



NOTES:
1. DISTANCE BETWEEN LATERAL ROWS AND EMITTER SPACING TO BE BASED ON SOIL TYPE, PLANT MATERIALS AND CHANGES IN ELEVATION. SEE RAIN BIRD XFS DRIPLINE INSTALLATION GUIDE FOR SUGGESTED SPACINGS.
2. LENGTH OF LONGEST DRIPLINE LATERAL SHOULD NOT EXCEED THE MAXIMUM LENGTH SHOWN IN THE ACCOMPANYING TABLE.
3. AIR RELIEF VALVE TO BE INSTALLED AT ALL HIGH POINTS.
4. DISTANCE FROM CURB TO ADJACENT DRIP LINE TO BE SPECIFIED BY DESIGN CONSULTANT (SEE DRAWINGS AND SPECIFICATIONS).
5. WHEN USING 1/2" MIPSO FITTINGS WITH DESIGN PRESSURE OVER 50PSI, IT IS RECOMMENDED THAT STAINLESS STEEL CLAMPS BE INSTALLED ON EACH FITTING.

- 1 BARB X BARB INSERT TEE OR CROSS: RAIN BIRD XFF-TEE OR RAIN BIRD XFD-CROSS (TYPICAL)
- 2 SUB-SURFACE DRIPLINE PIPE: RAIN BIRD XF SERIES DRIPLINE POTABLE: XFS DRIPLINE NON-POTABLE: XFS DRIPLINE
- 3 PERIMETER OF AREA
- 4 REFER TO DRAWINGS AND SPECIFICATIONS FOR PERIMETER DRIPLINE PIPE DISTANCE TO EDGE.
- 5 BARB X MALE THREAD CONNECTOR: RAIN BIRD XFF-MA FITTING (TYPICAL)
- 6 PVC SCH 40 TEE OR EL (TYPICAL)
- 7 PVC SUPPLY MANIFOLD
- 8 FLUSH POINT (TYPICAL) SEE RAIN BIRD DETAIL "XFS FLUSH POINT"
- 9 PVC SUPPLY PIPE FROM RAIN BIRD CONTROL ZONE KIT (SIZED TO MEET LATERAL FLOW DEMAND)
- 10 PVC SCH 40 RISER PIPE
- 11 PVC SCH 40 SLEEVE PIPE SIZED TWICE SIZE OF MANIFOLD PIPE SIZE.
- 12 PAVEMENT AND CURB
- 13 1/2" AIR RELIEF VALVE: RAIN BIRD MODEL: ARV050 SEE RAIN BIRD XFS DETAILS FOR AIR RELIEF INSTALLATION



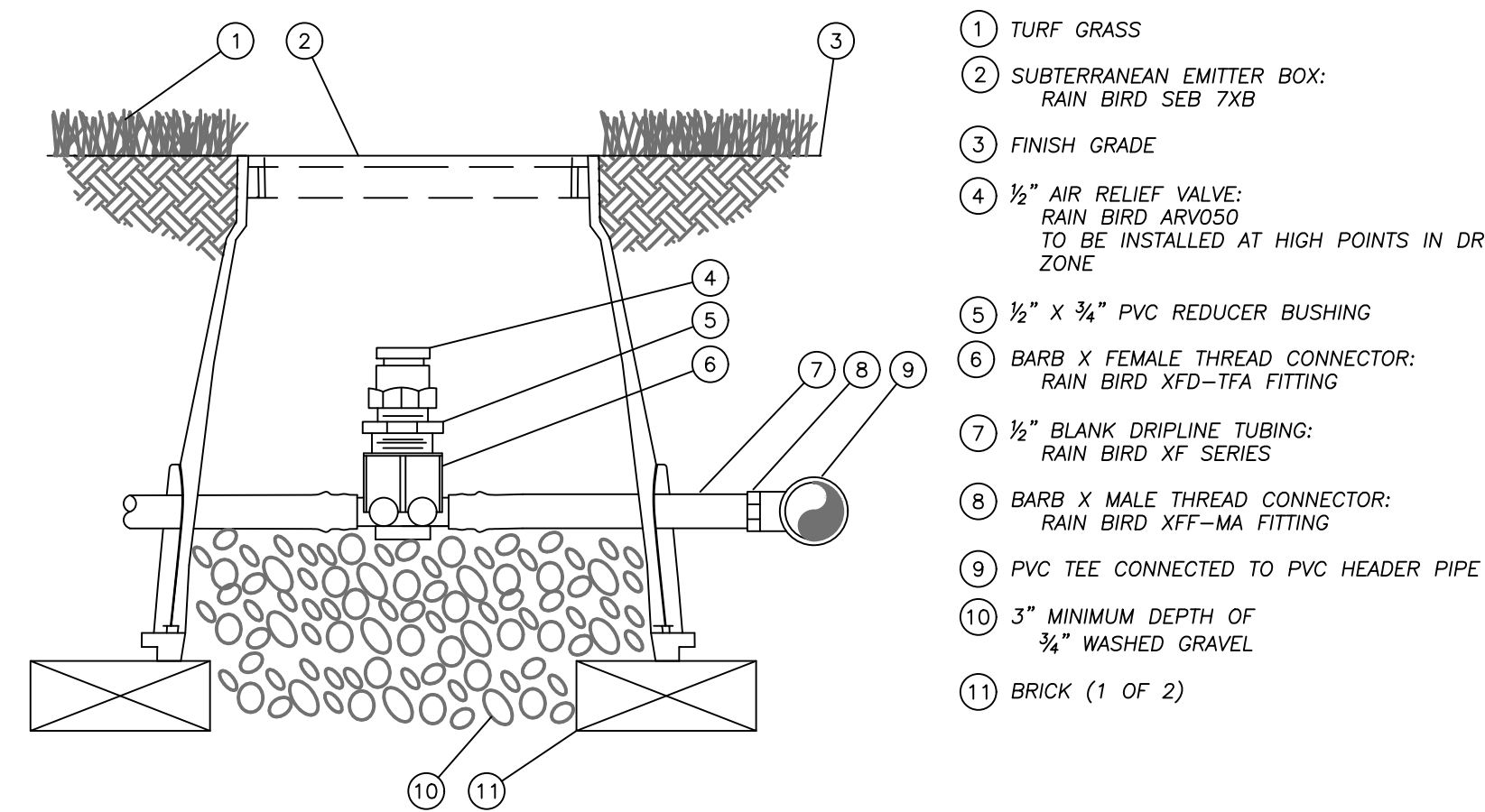
- 1 FINISH GRADE
- 2 PVC DRIP MANIFOLD PIPE
- 3 PVC 1" X 3/4" TRUE UNION BALL VALVE
- 4 EASY FIT MALE X BARB ADAPTER: RAIN BIRD XFF-MA-075
- 5 SUB-SURFACE DRIPLINE: RAIN BIRD XF SERIES BLANK TUBING
- 6 12-INCH VALVE BOX WITH COVER: RAIN BIRD VB-STD
- 7 3-INCH MINIMUM DEPTH OF 3/4" WASHED GRAVEL
- 8 BRICK (1 OF 2)

907 TYPICAL ISLAND DRIPLINE LAYOUT DETAIL

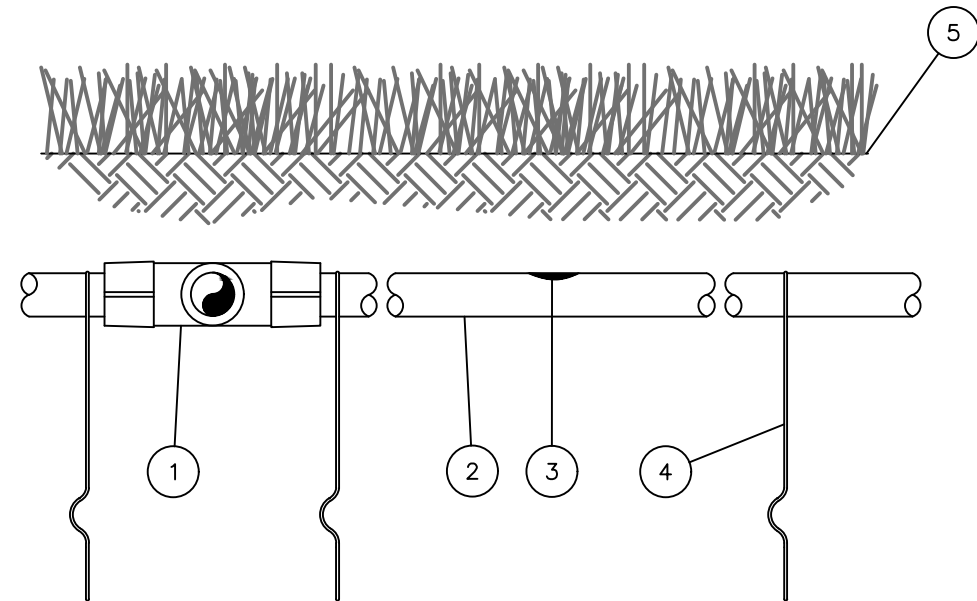
Not to Scale

908 DRIPLINE FLUSH POINT W/BALL VALVE DETAIL

Not to Scale

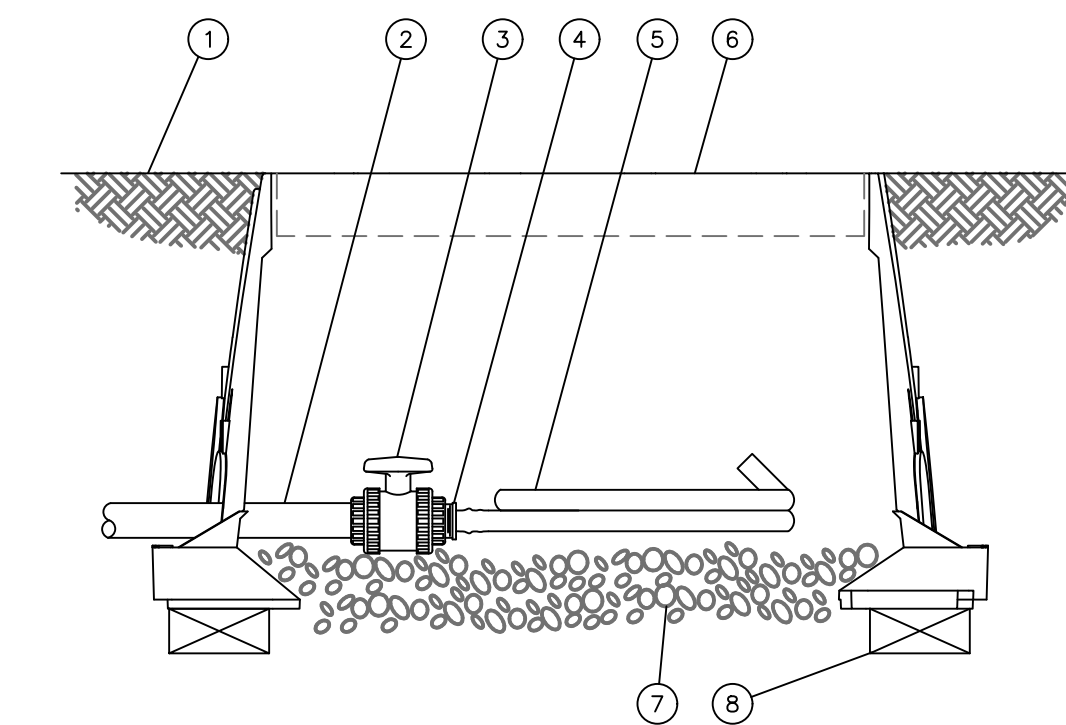


- 1 TURF GRASS
- 2 SUBTERRANEAN EMITTER BOX: RAIN BIRD SEB 7XB
- 3 FINISH GRADE
- 4 1/2" AIR RELIEF VALVE: RAIN BIRD ARV050 TO BE INSTALLED AT HIGH POINTS IN DRIP ZONE
- 5 1/2" X 3/4" PVC REDUCER BUSHING
- 6 BARB X FEMALE THREAD CONNECTOR: RAIN BIRD XFD-TFA FITTING
- 7 1/2" BLANK DRIPLINE TUBING: RAIN BIRD XF SERIES
- 8 BARB X MALE THREAD CONNECTOR: RAIN BIRD XFF-MA FITTING
- 9 PVC TEE CONNECTED TO PVC HEADER PIPE
- 10 3" MINIMUM DEPTH OF 3/4" WASHED GRAVEL
- 11 BRICK (1 OF 2)



- 1 EASY FIT COMPRESSION TEE: RAIN BIRD MDCFTTEE
- 2 SUB-SURFACE DRIPLINE: RAIN BIRD XF SERIES DRIPLINE POTABLE: XFS DRIPLINE NON-POTABLE: XFS DRIPLINE
- 3 INLINE DRIP EMITTER
- 4 TIE DOWN STAKE: RAIN BIRD TDS-050 WITH BEND (TYPICAL)
- 5 TURF/FINISH GRADE OR SHRUB BED WITH MULCH

NOTES:
1. PLACE TIE DOWN STAKES EVERY THREE FEET IN SAND, FOUR FEET IN LOAM, AND FIVE FEET IN CLAY.
2. AT FITTINGS WHERE THERE IS A CHANGE OF DIRECTION SUCH AS TEES OR ELBOWS, USE TIE-DOWN STAKES ON EACH LEG OF THE CHANGE OF DIRECTION.
3. INSERTION FLOW AND TRENCHED INSTALLATIONS DO NOT REQUIRE TIE DOWN STAKES.



- 1 FINISH GRADE
- 2 PVC DRIP MANIFOLD PIPE
- 3 PVC 1" X 3/4" TRUE UNION BALL VALVE
- 4 EASY FIT MALE X BARB ADAPTER: RAIN BIRD XFF-MA-075
- 5 SUB-SURFACE DRIPLINE: RAIN BIRD XF SERIES BLANK TUBING
- 6 12-INCH VALVE BOX WITH COVER: RAIN BIRD VB-STD
- 7 3-INCH MINIMUM DEPTH OF 3/4" WASHED GRAVEL
- 8 BRICK (1 OF 2)

908 DRIPLINE AIR RELIEF VALVE DETAIL

Not to Scale

909 XFS SUB-SURFACE DRIPLINE BURIAL DETAIL

Not to Scale

910 XFS DRIPLINE FLUSH POINT W/BALL VALVE

Not to Scale



PANDA EXPRESS, INC.
1683 Walnut Grove Ave.
Rosemead, California
91770
Telephone: 626.799.9898
Facsimile: 626.372.8288

All ideas, designs, arrangement and plans indicated or represented by this drawing are the property of Panda Express Inc. and were created for use on this specific project. None of these ideas, designs, arrangements or plans may be used by or disclosed to any person, firm, or corporation without the written permission of Panda Express Inc.

REVISIONS:

ISSUE DATE:

1ST SITE PLAN REVIEW	02-16-21
2ND PERMIT/BID SET	04-09-21

DRAWN BY:

PANDA PROJECT #: S8-22-D8193
PANDA STORE #: -
ARCH PROJECT #: 20044.021



hckloverarchitect
8813 PENROSE LANE, SUITE 400
LENEXA, KS 66219
ph: 913.649.8181 • fx: 913.649.1275

PANDA EXPRESS
TRUE WARM & WELCOME
1485 MAIN ST.
HAMILTON, OH 45013

IRRIGATION DETAILS 2

BHC RHODES
Civil Engineering • Surveying • Utilities
7101 College Blvd., Suite 400
Overland Park, Kansas 66210
p. (913) 663-1900 f. (913) 663-1633
BHC RHODES is a trademark of Brungardt Honanich & Company, P.A.

L2.2

TRUE WARM & WELCOME 2300 R5