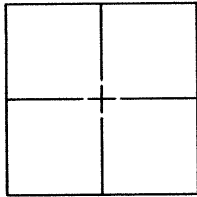


**CORNER RECORD**Document Number CR 7322City of HAYWARD County of ALAMEDA, CaliforniaBrief Legal Description COUNTY MONUMENT LG82G5 IN THE INTERSECTION OF WILLOW AVENUE AND HAVILAND AVENUE.**CORNER TYPE**

Government Corner ☐ Control ☒  
 Meander ☐ Property ☐  
 Rancho ☐ Other ☐  
 Date of Survey 5/18/15

**COORDINATES \*\***

N. 2072141±  
 E. 6097986±  
 Zone 3 NAD27 ☐ NAD83 ☒  
 NAD83 Epoch 1991.35  
 Elev. 71.17  
 Vet. Datum: NGVD29 ☐ NAVD88 ☒  
 Meas. Units: Metric ☐ Imperial ☐

**Corner** - Left as found ☒ Found and tagged ☐ Established ☐ Reestablished ☐ Rebuilt ☐

Identification and type of corner found: Evidence used to identify or procedure used to establish or reestablish the corner:  
THIS CORNER RECORD IS BEING FILED PURSUANT TO SECTION 8771.(b) OF THE CALIFORNIA BUSINESS AND  
PROFESSIONS CODE. SEE PAGE 2 FOR DETAILS.

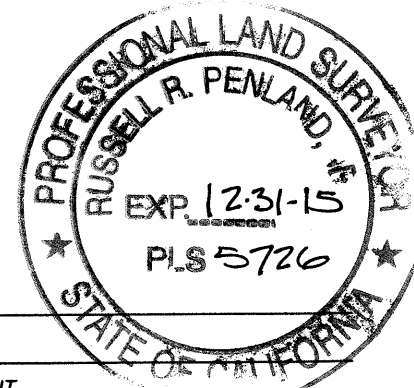
A description of the physical condition of the monument as found and as set or reset: \_\_\_\_\_  
FOUND AND SET POINTS AS SHOWN ON PAGE 2.

**SURVEYOR'S STATEMENT**

This Corner Record was prepared by me or under my direction in conformance with  
 the Land Surveyor's Act on MAY 20, 20 15  
 Signed Patrick M. Rei P.L.S. or R.C.E. No. 8178

**COUNTY SURVEYOR'S STATEMENT**

This Corner Record was received 5-21- 20 15  
 and examined and filed 6-8- 20 15  
 Signed Russell R. Penland P.L.S. or R.C.E. No. 5726  
 Title COUNTY SURVEYOR



**County Surveyor's Comment:** \_\_\_\_\_

COORDINATES\*\* COORDINATES ARE NAVIGATIONAL QUALITY ONLY, NOT FOR RETRACEMENT.

SPEC. 2188 4 of 4.

KSR JOB# 19502

P: \projects\19502\KSR DWGS\19502 MON RP.dwg

See Alameda County File drawing U375  
for benchmark information

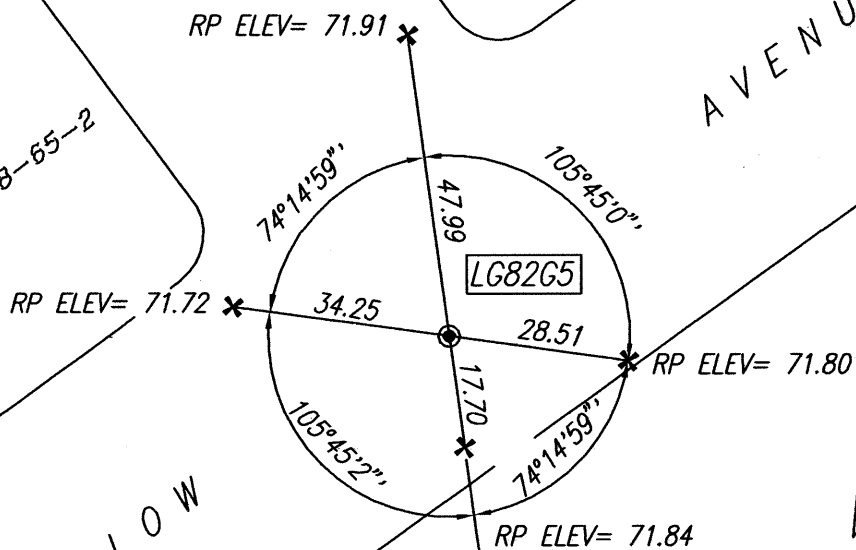
RP ELEVATIONS ESTABLISHED BY DIFFERENTIAL  
LEVELING USING A SOKKIA SDL 30DIGITAL LEVEL.

HAVILAND  
AVENUE

APN 429-50-59-2

AVENUE

APN 429-28-65-2



RP ELEV= 71.72

RP ELEV= 71.91

RP ELEV= 71.80

RP ELEV= 71.84

WILLOW



GRAPHIC SCALE



( IN FEET )

1 inch = 30 ft.

LEGEND

⊙ = FOUND ALAMEDA COUNTY STANDARD  
MONUMENT, 2.5" BRASS DISC WITH PIN

+ = SET CUT CROSS SIDEWALK