

PARCEL MAP

CONSISTING OF TWO SHEETS

A PORTION OF POTRERO DE SANTA CLARA
OR STOCKTON RANCHO

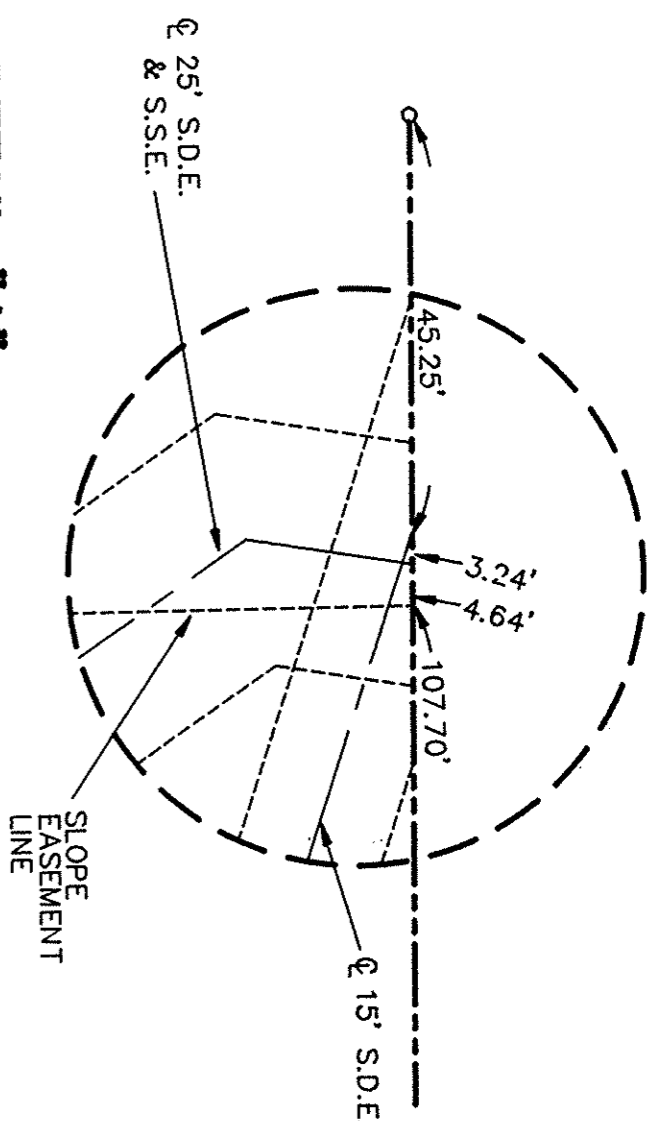
LYING ENTIRELY WITHIN THE CITY OF SANTA CLARA, CALIFORNIA
SCALE: 1"=100'
MAY 1996

EASEMENT DATA

① S35°10'00"W 21.32' @	④ N35°22'10"E 14.00'
② S43°34'41"E 184.23' @	⑤ S54°37'50"E 17.00'
③ S24°16'18"E 163.68' @	⑥ S35°22'10"W 7.00'
④ S43°34'41"E 295.70' @	⑦ S63°39'25"E 47.95'
⑤ S24°16'18"E 132.49' @	⑧ S32°56'31"W 22.45'
⑥ S29°00'38"W 166.15' @	⑨ Δ=1°23'25", R=1560.00', L=37.85'
⑦ S36°32'14"E 122.89' @	⑩ N53°47'47"W 185.97' @
⑧ S36°57'21"W 17.47' @	⑪ N85°48'02"W 16.73' @
⑨ S38°06'03"W 5.76' @	⑫ N61°56'16"W 163.28' @
⑩ S48°32'03"E 249.85'	⑬ N61°56'42"W 89.51' @
⑪ S43°27'38"E 217.19'	⑭ N61°17'09"W 138.36' @
⑫ S21°26'42"E 27.06' @	⑮ N59°46'12"W 147.59' @
⑬ S27°25'34"W 40.22' @	⑯ N56°43'54"W 24.46' @

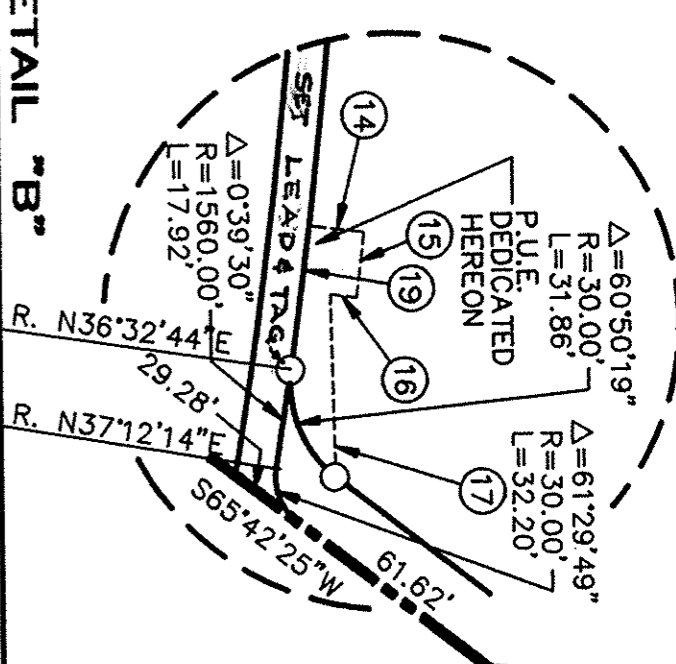
DETAIL "A"

SCALE: 1"=20'



DETAIL "B"

SCALE: 1"=50'



BASIS OF BEARINGS

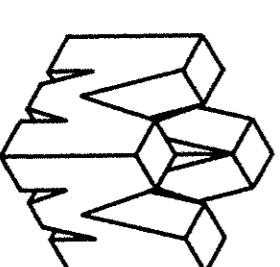
THE BEARING S65°41'24"W OF THE MONUMENT LINE OF HARRISON STREET BETWEEN THE ALAMEDA AND EL CAMINO REAL AS SHOWN ON PARCEL MAP RECORDED IN BOOK 642 OF MAPS AT PAGES 2 & 3 SANTA CLARA COUNTY RECORDS.

NOTES:

1. ALL DISTANCES AND DIMENSIONS ARE IN FEET AND DECIMALS THEREOF.
2. THE TOTAL AREA WITHIN THE DISTINCTIVE BORDER LINE IS 9.317± ACRES.

LEGEND

—	INDICATES DISTINCTIVE BORDER
—	PROPERTY LINE
—	CENTERLINE
—	EASEMENT
●	FOUND MONUMENT, AS NOTED
○	FOUND 3/4" I.P., TAGGED R.C.E. 21500
○	UNLESS OTHERWISE NOTED
○	SET 3/4" I.P., TAGGED R.C.E. 21500
○	PUBLIC UTILITY EASEMENT
○	STORM DRAINAGE EASEMENT
○	SANITARY SEWER EASEMENT
()	RECORD DATA
[]	CALIFORNIA TRANSPORTATION COMMISSION
[]	RELINQUISHMENT DATA, LT43 O.R. 183
[]	RADIAL



MISSION ENGINEERS, INC.

Responsive, Reliable Results Since 1953

2978 SCOTT BLVD.

SANTA CLARA, CALIFORNIA 95054

PHILIPPE AUGER, CIVIL ENGINEER

JOB NO. 94060 DWG NO. M-10392 DWN BY: DW/JCM/KP

RECORDED 8/19/96

FILE NO. 134133/3 BOOK 680

PAGE 50 & 51

SHEET 2 OF 2 SHEETS

C.S.C. S.1562